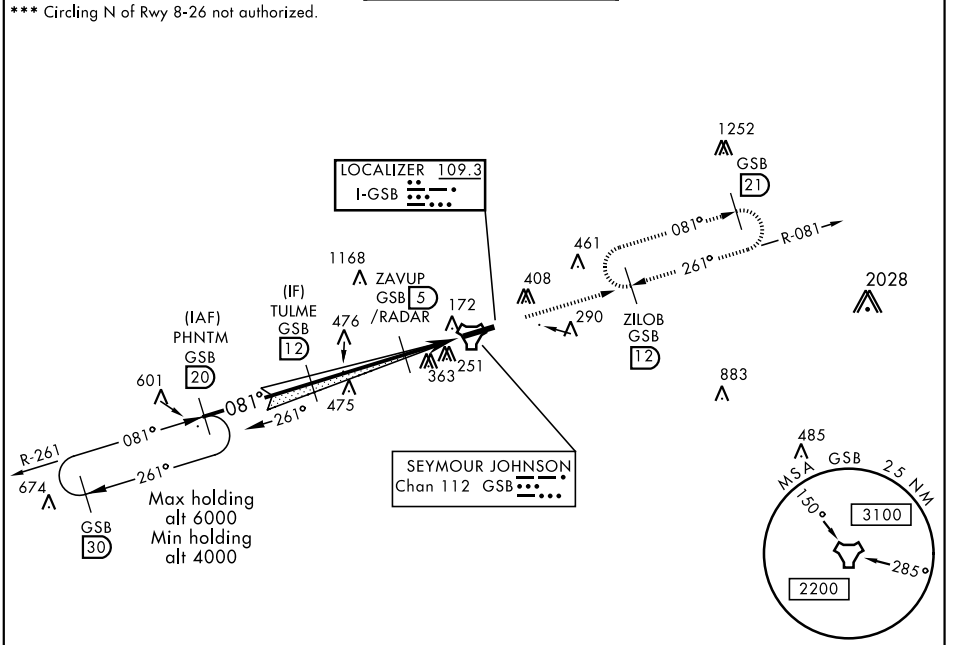


GOLDSBORO, NORTH CAROLINA

ILS or LOC Y RWY 8

LOC I-GSB 109.3	APCH CRS 081°	Rwy Idg 11,760 TDZE 73 Arpt Elev 109	AL-169 [USAF]	SEYMOUR JOHNSON AFB (KGSB)
▼ * When ALS inop, increase RVR to 40 and vis to 3/4 mile. ** When ALS inop, increase CAT AB RVR to 55 and vis to 1 mile, CAT CDE vis to 1 1/4 miles.			ALSF-1 	MISSED APPROACH: Climb to 2300 via GSB R-081 to ZILOB and hold.

ATIS ★ 317.625	SEYMOUR JOHNSON APP CON 258°-110° 123.7 290.9 111°-257° 119.7 273.6	SEYMOUR JOHNSON TOWER ★ 126.25 370.875	GND CON 138.1 275.8	CLNC DEL 128.025 270.8
--------------------------	---	--	-------------------------------	----------------------------------

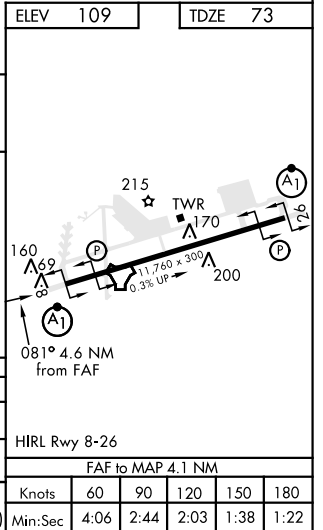
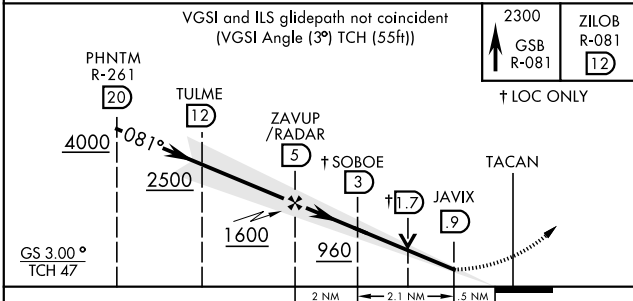


SE-2, 10 SEP 2020 to 08 OCT 2020

SE-2, 10 SEP 2020 to 08 OCT 2020

RADAR or DME REQUIRED

EMERG SAFE ALT 100 NM 3700



CATEGORY	A	B	C	D	E
S-ILS 8*	273/24		200	(200-1/2)	
S-LOC 8**	560/24	487 (500-1/2)	560/50	487	(500-1)
CIRCLING ***	620-1	511 (600-1)	680-1 1/2 571 (600-1 1/2)	700-2 591 (600-2)	760-2 1/4 651 (700-2 1/4)

GOLDSBORO, NORTH CAROLINA

35°20'N-77°58'W

SEYMOUR JOHNSON AFB (KGSB)

Amdt 7 07DEC17

ILS or LOC Y RWY 8