

APCH CRS 081°	Rwy Idg 11,760
	TDZE 73
	Arpt Elev 109

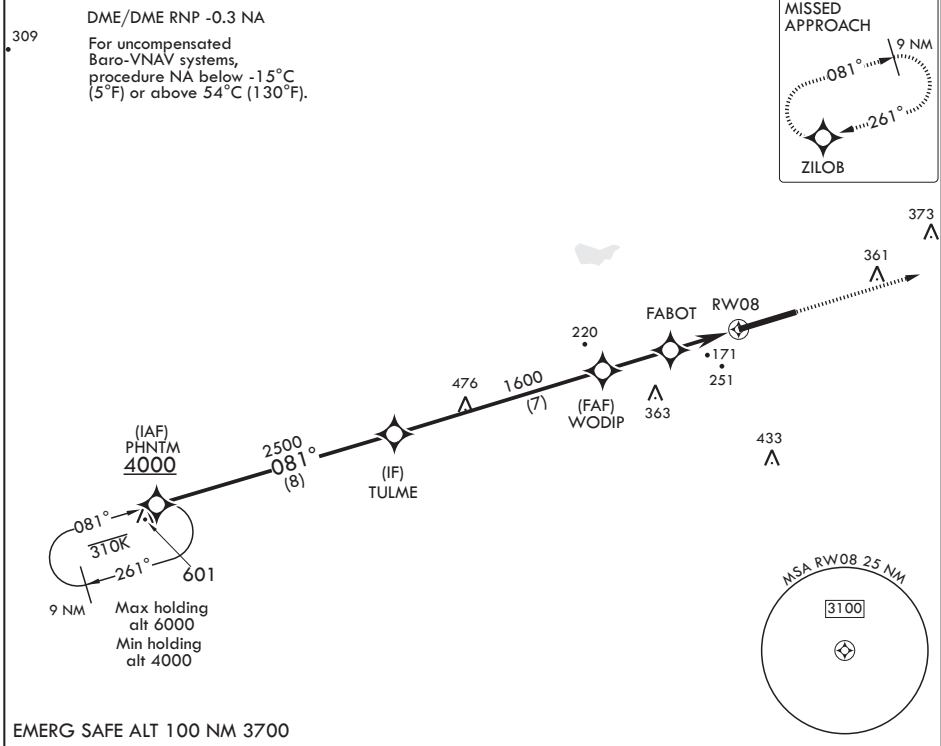
AL-169 (USAF)

SEYMOUR JOHNSON AFB (KGSB)

▼ * When ALS inop, increase vis to 1 3/8 miles.
 ** When ALS inop, increase CAT AB RVR to 55, vis to 1 mile; CAT CDE vis to 1 3/8 miles.
 *** Circling NA N of Rwy 8-26.

ALSF-1 MISSED APPROACH: Climb to 2300 direct ZILOB and hold.

ATIS* 317.625	APP CON 119.7 273.6 111° -257° 123.7 290.9 258° -110°	TOWER 126.25 370.875	GND CON 138.1 275.8	CLNC DEL 128.025 270.8
-------------------------	---	--------------------------------	-------------------------------	----------------------------------



EMERG SAFE ALT 100 NM 3700

PHNTM 4000	TULME 2500	WODIP 1600	FABOT 1600	RWY 8 11,760	ZILOB ELEV 109	TDZE 73
GP 3.02° TCH 55				TWR 11,760 x 300 0.3% UP		
CATEGORY	A	B	C	D	E	
LNAV/VNAV DA*	540/50		467	(500-1)		
LNAV MDA**	540/24 467 (500-1/2)		540/50	467	(500-1)	
C CIRCLING***	620-1	511 (600-1)	680-1 1/2 571 (600-1 1/2)	700-2 591 (600-2)	760-2 1/4 651 (700-2 1/4)	

HIRL all Rwys

SE-2, 10 SEP 2020 to 08 OCT 2020

SE-2, 10 SEP 2020 to 08 OCT 2020