

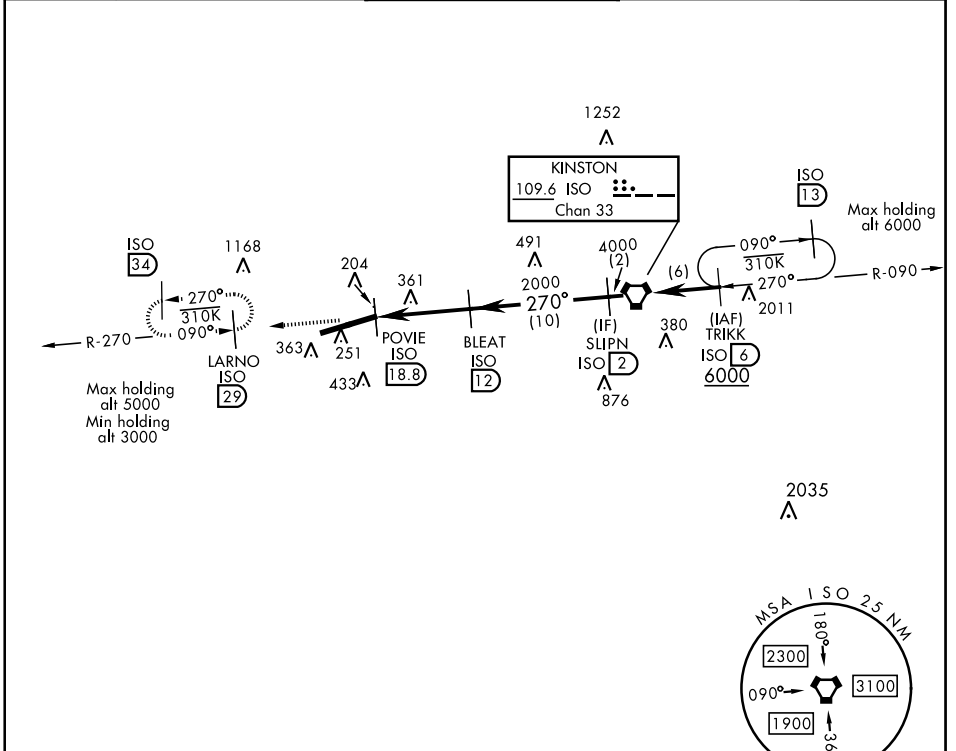
TACAN-A

KINSTON ISO 109.6 Chan 33	APCH CRS 270°	Rwy Idg TDZE Arprt Elev N/A N/A 109	AL-169 [USAF]	SEYMOUR JOHNSON AFB (KGSB)
---	-------------------------	---	---------------	----------------------------

Circling not authorized from RWY 8 clockwise to RWY 26.

 MISSED APPROACH: Climb straight on VORTAC ISO R-270 to 29 DME (LARNO) and hold; continue climb and hold to 3000.

ATIS ★ 317.625	SEYMOUR JOHNSON APP CON 258°-110° 123.7 290.9 111°-257° 119.7 273.6	SEYMOUR JOHNSON TOWER ★ 126.25 370.875	GND CON 138.1 275.8	CLNC DEL 128.025 270.8
--------------------------	---	--	-------------------------------	----------------------------------



SE-2, 10 SEP 2020 to 08 OCT 2020

SE-2, 10 SEP 2020 to 08 OCT 2020

EMERG SAFE ALT 100 NM 4100

ELEV 109	TDZE N/A	2200 ISO R-270	LORNO R-270 ISO 29	TRIKK 6 6000
		BLEAT 12 2000	VORTAC 4000	
FAF to MAP 6.8 NM				
Knots	60 90 120 150 180	CATEGORY	A B C D E	
Min:Sec	6:48 4:32 3:24 2:43 2:16	<input checked="" type="checkbox"/> CIRCLING	660-1 551 (600-1) 680-1½ 571 (600-1½) 700-2 591 (600-2) 760-2¼ 651 (700-2¼)	

GOLDSBORO, NORTH CAROLINA 35° 20' N-77° 58' W SEYMOUR JOHNSON AFB (KGSB)

Orig 13SEP18

TACAN-A