

GOLDSBORO, NORTH CAROLINA

# TACAN Y RWY 8

TACAN GSB Chan <b>112</b>	APCH CRS <b>081°</b>	Rwy Idg TDZE Arpt Elev <b>11,760</b> <b>73</b> <b>109</b>
------------------------------	-------------------------	--

AL-169 [USAF]

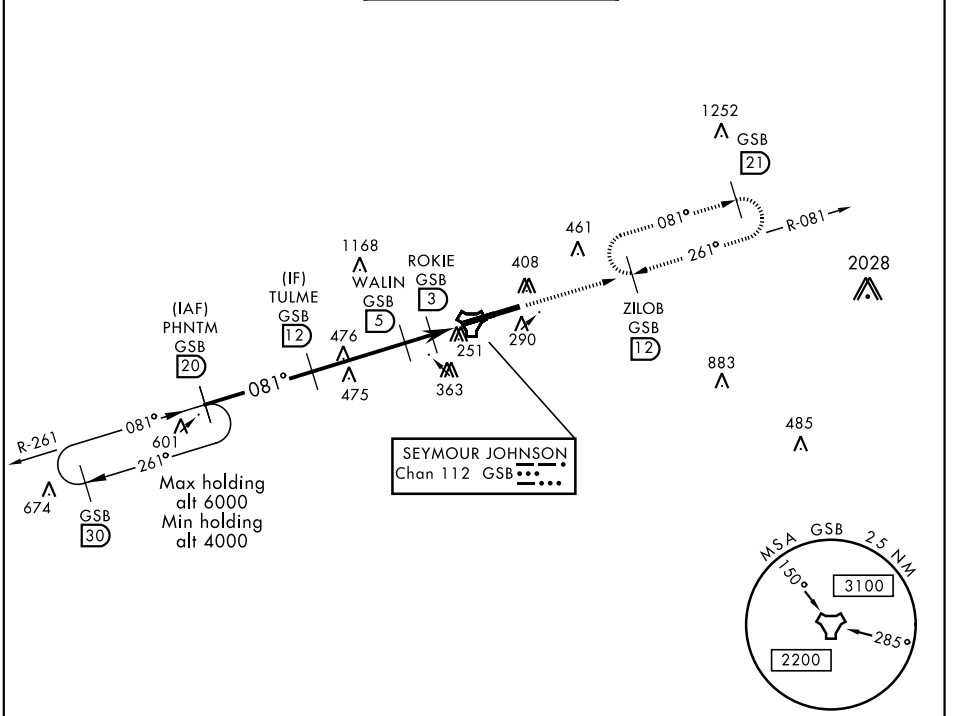
SEYMOUR JOHNSON AFB (KGSB)

▼ \* When ALS inop, increase CAT AB RVR to 55, vis to 1 mile, CAT CDE vis to 1 3/8 miles.  
 \*\* Circling N of Rwy 8-26 not authorized.



MISSED APPROACH: Climb to 2300 via GSB R-081 to ZILOB and hold.

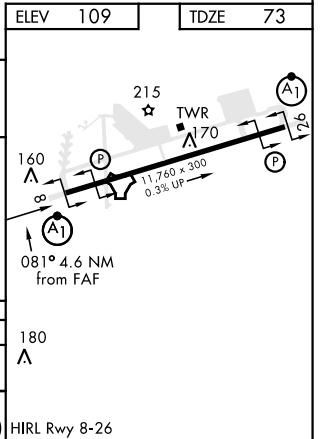
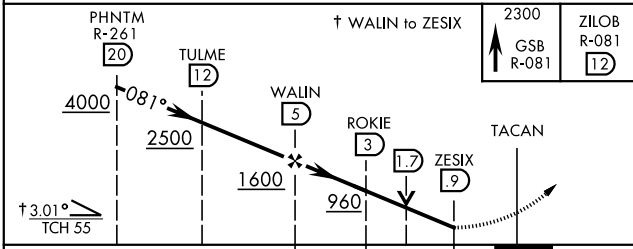
ATIS ★ <b>317.625</b>	SEYMOUR JOHNSON APP CON 258°-110° <b>123.7 290.9</b> 111°-257° <b>119.7 273.6</b>	SEYMOUR JOHNSON TOWER ★ <b>126.25 370.875</b>	GND CON <b>138.1 275.8</b>	CLNC DEL <b>128.025 270.8</b>
--------------------------	---	--	-------------------------------	----------------------------------



SE-2, 10 SEP 2020 to 08 OCT 2020

SE-2, 10 SEP 2020 to 08 OCT 2020

EMERG SAFE ALT 100 NM 3700



ELEV 109	TDZE 73				
PHNTM R-261 (20)	↑ WALIN to ZESIX	2300 GSB R-081	ZILOB R-081 (12)		
4000	2500	1600	960		
↑ 3.01° TCH 55					
CATEGORY	A	B	C	D	E
S-8*	560/24	487 (500-1/2)	560/50	487 (500-1)	
CIRCLING**	620-1	511 (600-1)	680-1 1/2 571 (600-1 1/2)	700-2 591 (600-2)	760-2 1/4 651 (700-2 1/4)

GOLDSBORO, NORTH CAROLINA

35°20'N-77°58'W

SEYMOUR JOHNSON AFB (KGSB)

Amdt 7 05DEC19

# TACAN Y RWY 8