

LOC I-GRI 111.9	APP CRS 353°	Rwy Idg 7002
		TDZE 1847
		Apt Elev 1847

ILS or LOC RWY 35

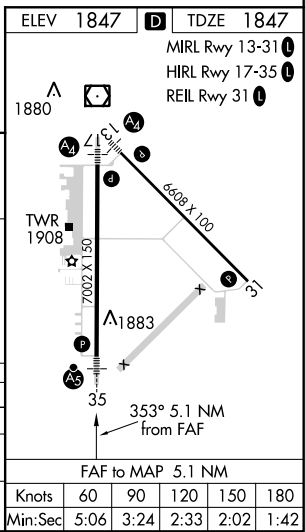
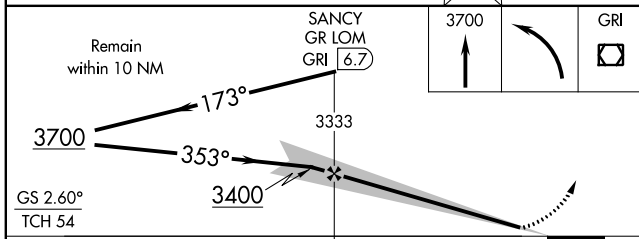
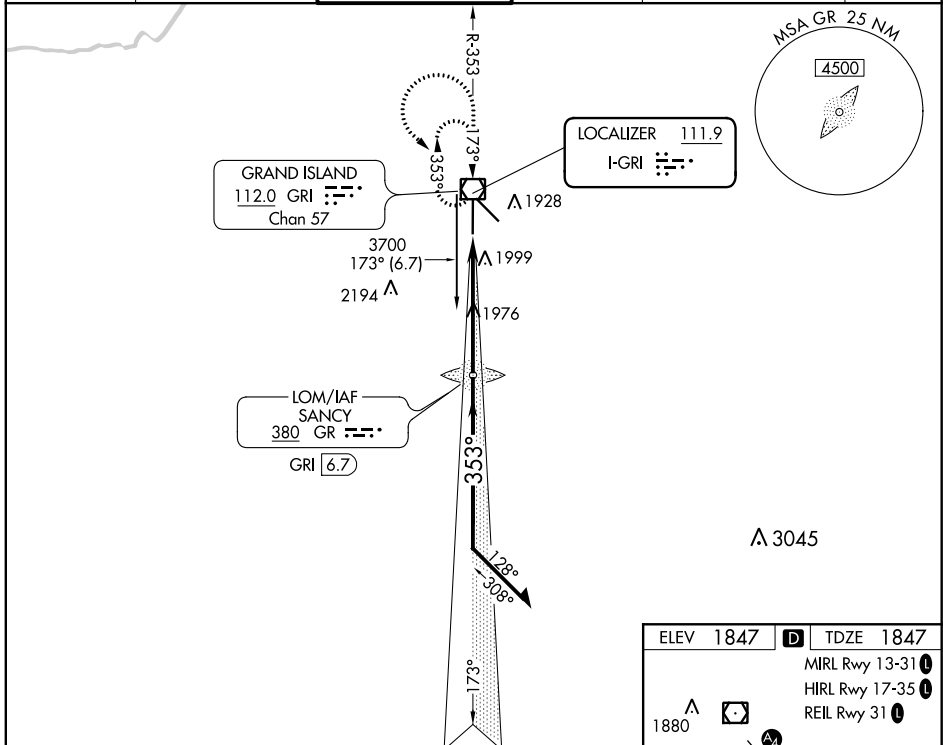
CENTRAL NEBRASKA RGNL (GRI)

⚠ When local altimeter setting not received, use Aurora altimeter setting and increase all DA/MDA 60 feet, increase S-LOC 35 Cat C/D visibility to RVR 4500.
⚠ * RVR 1800 authorized with the use of FD or AP or HUD to DA (NA when using Aurora altimeter setting).

MALSR

MISSED APPROACH: Climb to 3700 then left turn direct GRI VOR/DME and hold.

ATIS 127.4	MINNEAPOLIS CENTER 119.4 278.8	GRAND ISLAND TOWER* 118.2 (CTAF) 259.3	GND CON 121.9 259.3	CINC DEL 121.9	UNICOM 122.95
----------------------	------------------------------------------	--------------------------------------------------	-------------------------------	--------------------------	-------------------------



CATEGORY	A	B	C	D
S-ILS 35	* 2047/24 200 (200-½)			
S-LOC 35	2240/24	393 (400-½)	2240/35	393 (400-¾)
CIRCLING	2300-1	453 (500-1)	2300-1½ 453 (500-1½)	2400-2 553 (600-2)

NC-2, 10 SEP 2020 to 08 OCT 2020

NC-2, 10 SEP 2020 to 08 OCT 2020