
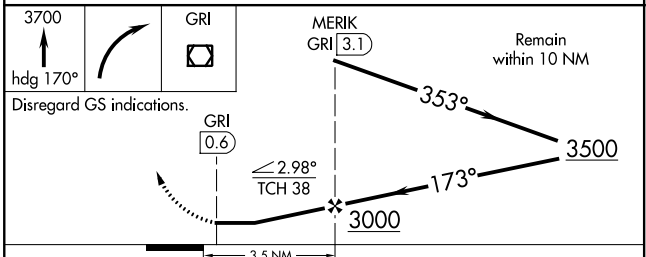
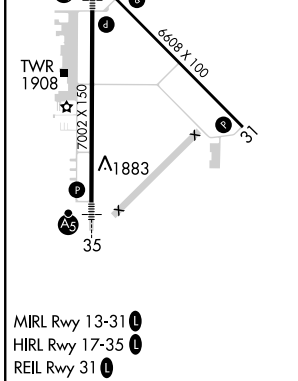
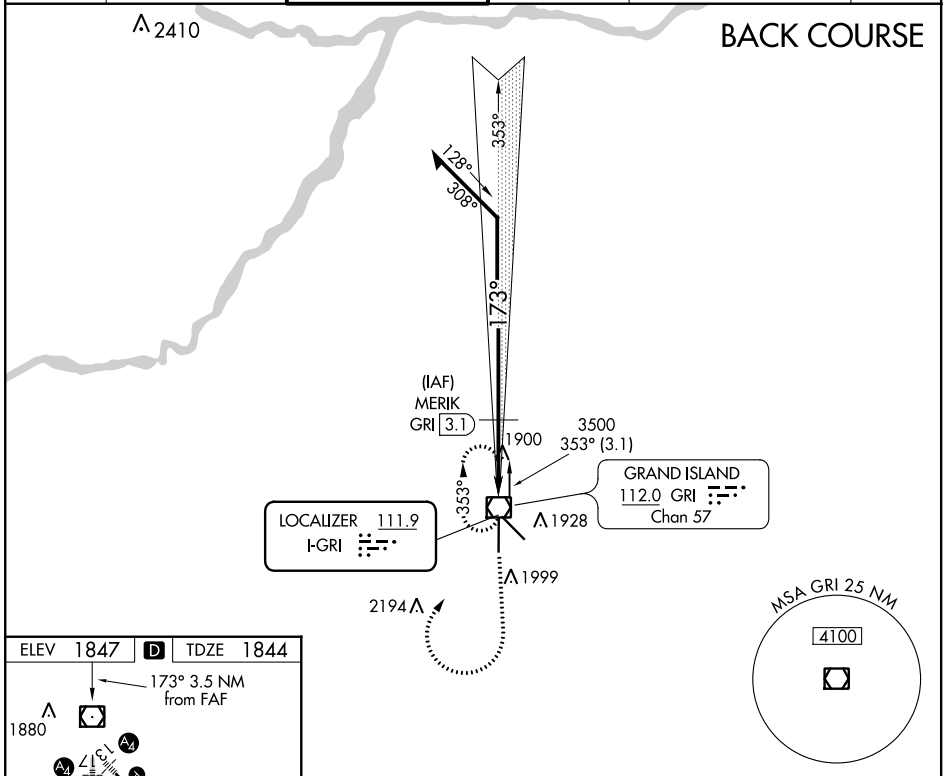


LOC I-GRI 111.9	APP CRS 173°	Rwy Idg 7002 TDZE 1844 Apt Elev 1847
---------------------------	------------------------	--

LOC/DME BC RWY 17

CENTRAL NEBRASKA RGNL (G.R.I.)

<p>Simultaneous reception of I-GRI and GRI DME required. When local altimeter setting not received, use Aurora altimeter setting and increase all MDA 60 feet, and increase S-17 Cat D visibility 1/4 mile.</p>			<p>MALS </p>	<p>MISSED APPROACH: Climb to 3700 on heading 170° then right turn direct GRI VOR/DME and hold.</p>	
<p>ATIS 127.4</p>	<p>MINNEAPOLIS CENTER 119.4 278.8</p>	<p>GRAND ISLAND TOWER ★ 118.2 (CTAF) 259.3</p>	<p>GND CON 121.9 259.3</p>	<p>CLNC DEL 121.9 (when tower closed)</p>	<p>UNICOM 122.95</p>



CATEGORY	A	B	C	D
S-17		2160-3/4 316 (400-3/4)		2160-1 316 (400-1)
CIRCLING	2300-1	453 (500-1)	2300-1 1/2 453 (500-1 1/2)	2400-2 553 (600-2)

NC-2, 10 SEP 2020 to 08 OCT 2020

NC-2, 10 SEP 2020 to 08 OCT 2020