

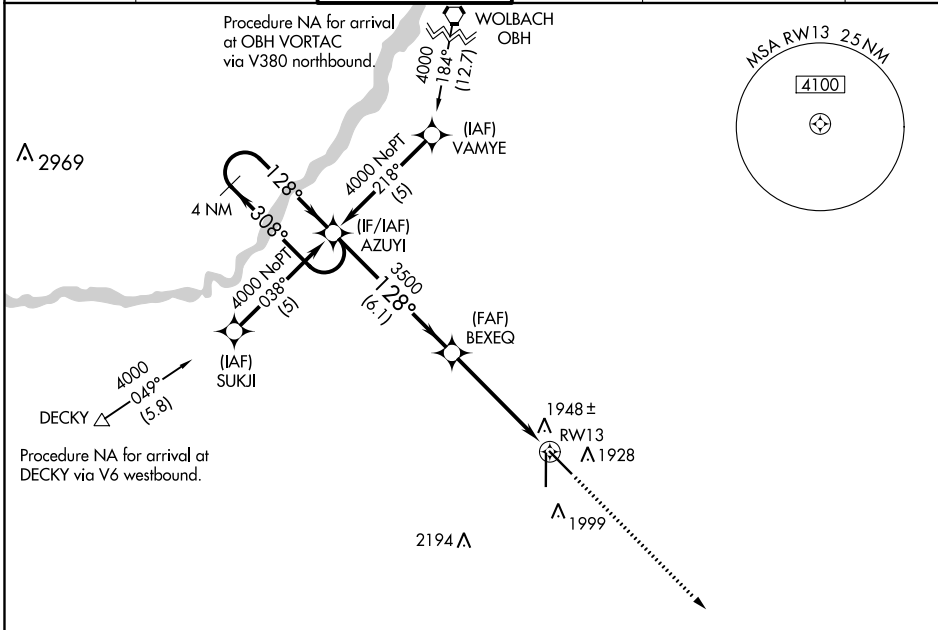
WAAS CH 53399 W13A	APP CRS 128°	Rwy Idg 6608 TDZE 1842 Apt Elev 1847
--	------------------------	---

RNAV (GPS) RWY 13

CENTRAL NEBRASKA RGNL (GRI)

<p>DME/DME RNP-0.3 NA. Baro-VNAV NA below -18°C (0°F). If local altimeter setting not received, use Aurora altimeter setting and increase all DAs/MDAs 60 feet. Baro-VNAV and VDP NA when using Aurora altimeter setting. Inop table does not apply to LPV and LNAV/VNAV.</p>	<p>MALS</p>	<p>MISSED APPROACH: Climb to 4100 direct AGEKY and hold.</p>

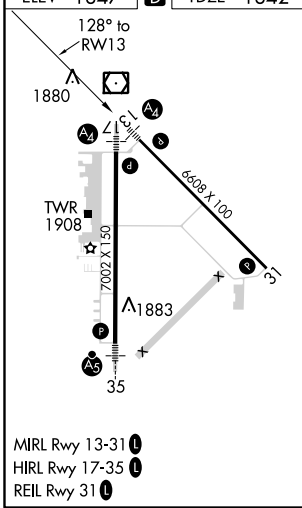
ATIS 127.4	MINNEAPOLIS CENTER 119.4 278.8	GRAND ISLAND TOWER* 118.2 (CTAF) 259.3	GND CON 121.9 259.3	CLNC DEL 121.9 <small>(when tower closed)</small>	UNICOM 122.95
----------------------	--	--	-------------------------------	--	-------------------------



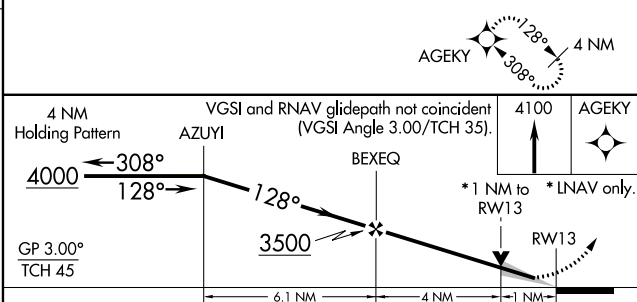
NC-2, 10 SEP 2020 to 08 OCT 2020

NC-2, 10 SEP 2020 to 08 OCT 2020

ELEV 1847	D	TDZE 1842
-----------	----------	-----------



- MIRL Rwy 13-31
- HIRL Rwy 17-35
- REIL Rwy 31



CATEGORY	A	B	C	D
LPV DA		2092-3/4	250 (300-3/4)	
LNAV/ VNAV DA		2247-1 1/2	405 (400-1 1/2)	
LNAV MDA	2200-3/4	358 (400-3/4)		2200-1 1/4 358 (400-1 1/4)
CIRCLING	2300-1 1/2	453 (500-1 1/2)		2400-2 553 (600-2)