

WAAS CH <b>86799</b> <b>W35A</b>	APP CRS <b>353°</b>	Rwy Idg <b>7002</b> TDZE <b>1847</b> Apt Elev <b>1847</b>
--	------------------------	---

# RNAV (GPS) RWY 35

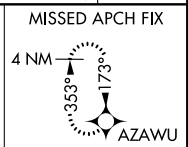
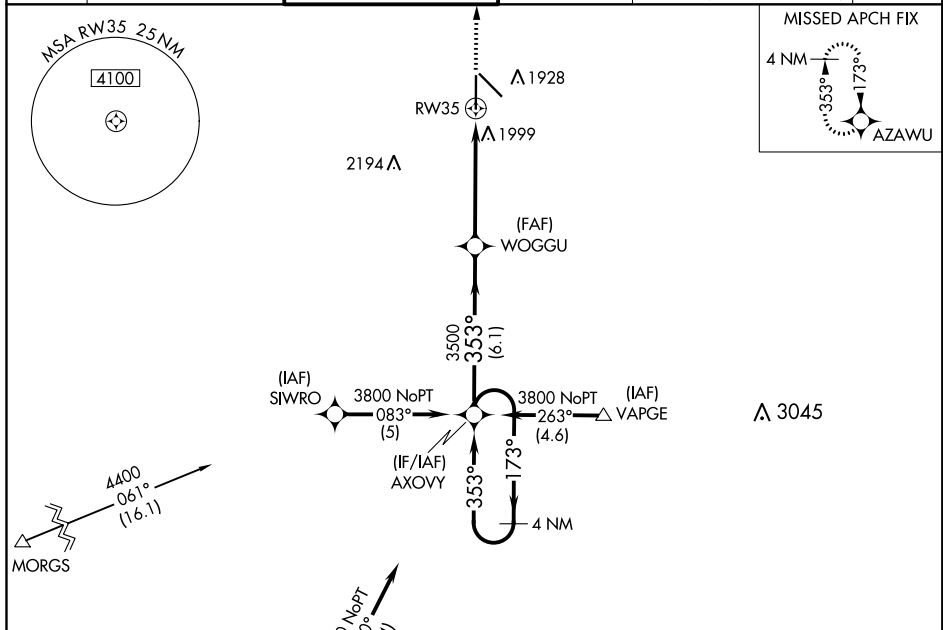
CENTRAL NEBRASKA RGNL (GRI)

**▼** DME/DME RNP-0.3 NA. Baro-VNAV NA below -18°C (0°F). If local altimeter setting not received, use Aurora altimeter setting and increase all DAs/MDAs 60 feet.  
**▲** Baro-VNAV and VDP NA when using Aurora altimeter setting. For inop MALSR increase LPV visibility to RVR 4000 all Cats.

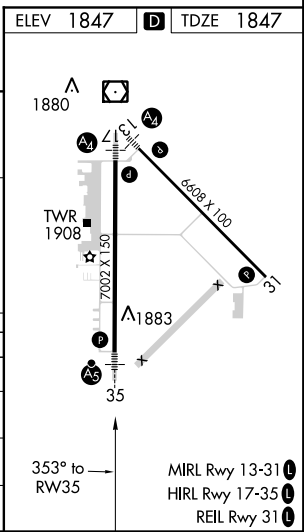
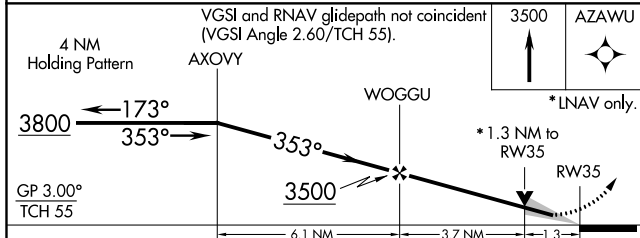


**MISSED APPROACH:**  
Climb to 3500 direct AZAWU and hold.

ATIS <b>127.4</b>	MINNEAPOLIS CENTER <b>119.4 278.8</b>	GRAND ISLAND TOWER ★ <b>118.2 (CTAF) 259.3</b>	GND CON <b>121.9 259.3</b>	CLNC DEL <b>121.9</b> (when tower closed)	UNICOM <b>122.95</b>
----------------------	--	---	-------------------------------	---	-------------------------



Procedure NA for arrival at HSI VOR/DME on airway radials 006 CW 068. (IAF) HASTINGS HSI



CATEGORY	A	B	C	D
LPV DA		2097/24	250 (300-½)	
LNAV/VNAV DA		2283/50	436 (500-1)	
LNAV MDA	2260/24	413 (500-½)	2260/40 413 (500-¾)	2260/50 413 (500-1)
CIRCLING		2300-1½	453 (500-1½)	2400-2 553 (600-2)

NC-2, 10 SEP 2020 to 08 OCT 2020

NC-2, 10 SEP 2020 to 08 OCT 2020