


VOR/DME GRI 112.0 Chan 57	APP CRS 353°	Rwy Idg 7002 TDZE 1847 Apt Elev 1847
---	------------------------	---

VOR/DME RWY 35

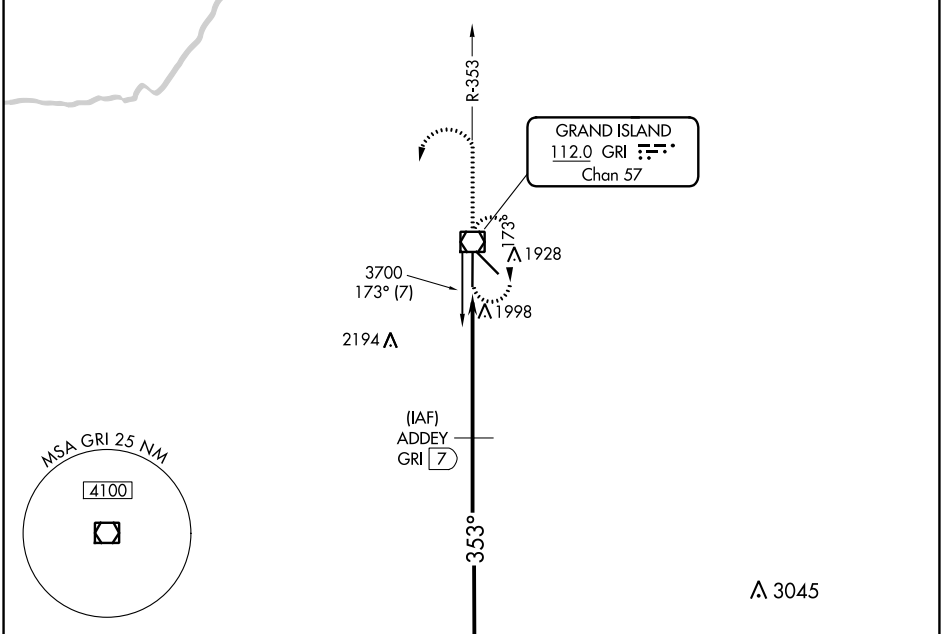
CENTRAL NEBRASKA RGNL (GRI)

V VDP NA when using Aurora altimeter setting. When local altimeter setting not received, use Aurora altimeter setting and increase all MDA 60 feet. For inop MALSRL, increase S-35 Cat D visibility to 1/4 mile.

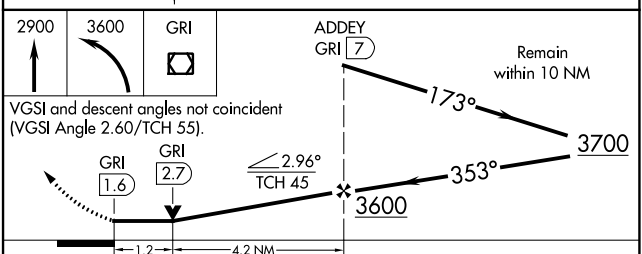
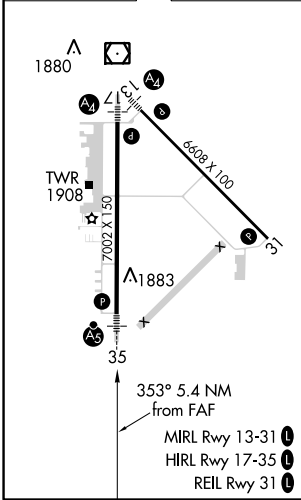
MALSRL 

MISSED APPROACH: Climb to 2900, then climbing left turn to 3600 direct GRI VOR/DME and hold.

ATIS 127.4	MINNEAPOLIS CENTER 119.4 278.8	GRAND ISLAND TOWER* 118.2 (CTAF) 0 259.3	GND CON 121.9 259.3	CLNC DEL 121.9 126.05 (when tower closed)	UNICOM 122.95
----------------------	--	--	-------------------------------	---	-------------------------



ELEV 1847	D	TDZE 1847
------------------	----------	------------------



CATEGORY	A	B	C	D
S-35	2260-1/2	413 (500-1/2)	2260-3/4 413 (500-3/4)	2260-1 413 (500-1)
CIRCLING	2300-1	453 (500-1)	2300-1 1/2 453 (500-1 1/2)	2400-2 553 (600-2)

NC-2, 10 SEP 2020 to 08 OCT 2020

NC-2, 10 SEP 2020 to 08 OCT 2020