

LOC/DME I-AAY <b>110.3</b> Chan 40	APP CRS <b>227°</b>	Rwy Idg TDZE Apt Elev	<b>8273</b> <b>262</b> <b>266</b>
--	------------------------	-----------------------------	---

# ILS or LOC RWY 22R

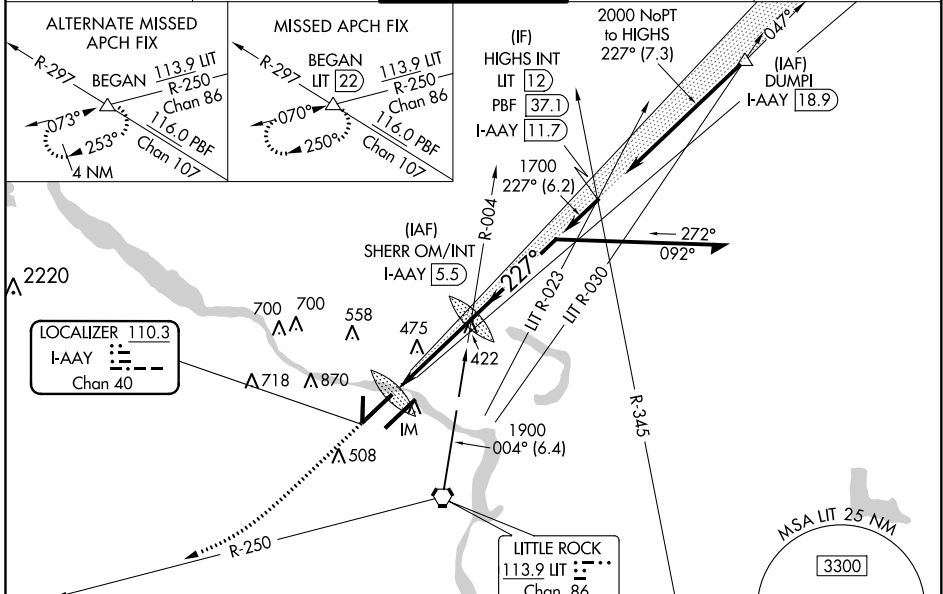
BILL AND HILLARY CLINTON NATIONAL/ADAMS FIELD (LIT)

DME required.

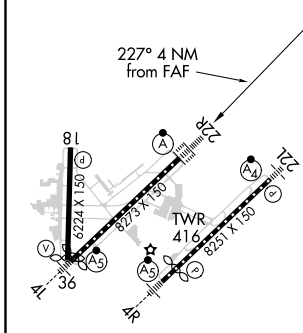
**⚠** Simultaneous approach authorized with Rwy 22L. VDP NA when using Stuttgart altimeter setting. When local altimeter setting not received, use Stuttgart altimeter setting; increase all DA to 544 feet and increase S-ILS all Cats visibility to RVR 2200; increase all MDA's 100 feet and increase S-LOC Cat C/D visibility to RVR 5500, and Circling Cat B visibility to 1½ SM, Cat C visibility to 3 SM. For inop ALS, increase S-LOC Cat C/D visibility to RVR 6000. For inop ALS when using Stuttgart altimeter setting, increase S-ILS all Cats visibility to RVR 4500 and S-LOC Cat C/D visibility to 1½ SM.

**ALSIF-2**  
Climb to 1000 then climbing right turn to 2300 on LIT VORTAC R-250 to BEGAN INT/ LIT 22 DME and hold.

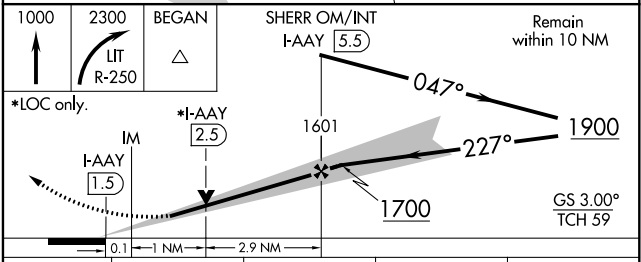
D-ATIS <b>125.65</b>	LITTLE ROCK APP CON <b>135.4 353.6</b>	ADAMS TOWER <b>118.7 257.8</b>	GND CON <b>121.9 339.8</b>	CLNC DEL <b>118.95</b>
-------------------------	---	-----------------------------------	-------------------------------	---------------------------



ELEV 266	<b>D</b>	TDZE 262
----------	----------	----------



1000	2300	BEGAN	SHERR OM/INT I-AAY 5.5	Remain within 10 NM
------	------	-------	------------------------	---------------------



TDZ/CL Rwy 22R	MIRL Rwy 18-36	HIRL Rwys 4R-22L and 4L-22R	FAF to MAP 4 NM		
Knots	60	90	120	150	180
Min:Sec	4:00	2:40	2:00	1:36	1:20

CATEGORY	A	B	C	D
S-ILS 22R	462/18		200 (200-½)	
S-LOC 22R	680/24	418 (500-½)	680/40	418 (500-¾)
<b>C</b> CIRCLING	800-1 534 (600-1)	1000-1 734 (800-1)	1180-2¾ 914 (1000-2¾)	1180-3 914 (1000-3)

SC-1, 10 SEP 2020 to 08 OCT 2020

SC-1, 10 SEP 2020 to 08 OCT 2020