

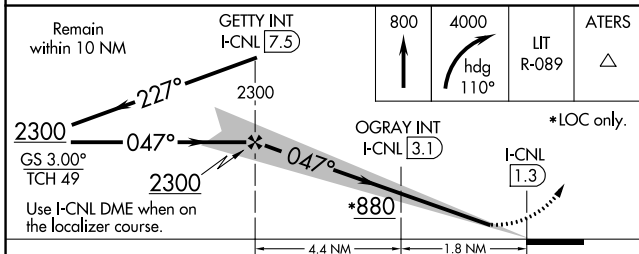
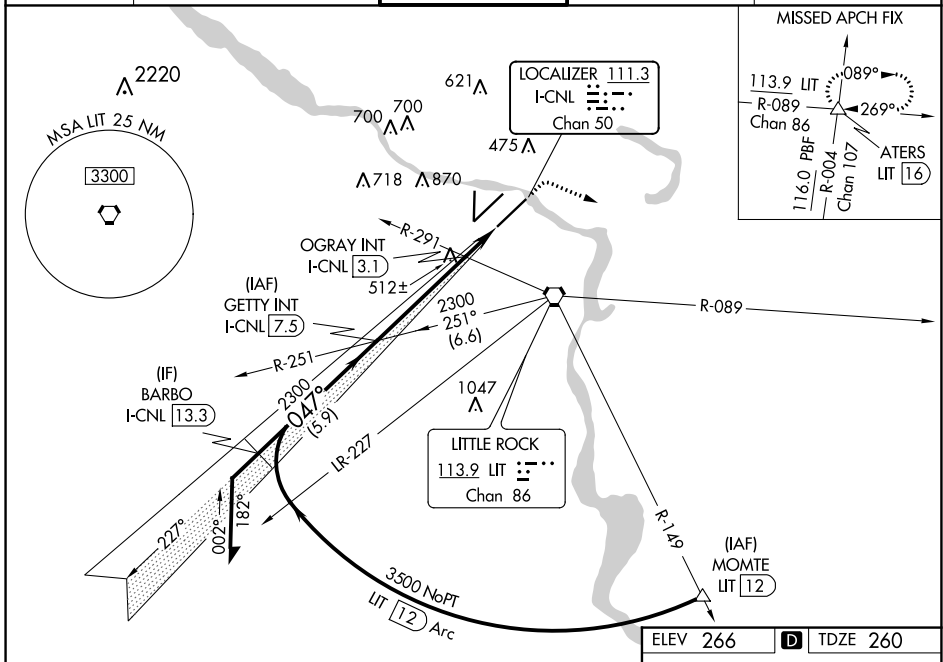
LOC/DME I-CNL <b>111.3</b> Chan 50	APP CRS <b>047°</b>	Rwy Idg TDZE Apt Elev	<b>7201</b> <b>260</b> <b>266</b>
--	------------------------	-----------------------------	---

# ILS or LOC RWY 4R

BILL AND HILLARY CLINTON NATIONAL/ADAMS FIELD (LIT)

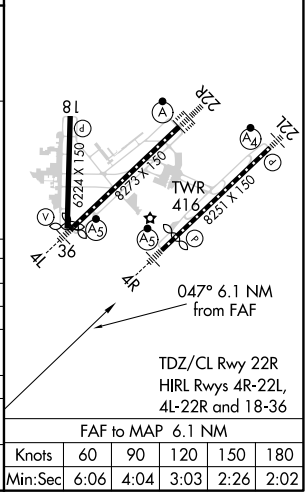
<p><b>▼</b> Inop table does not apply to S-ILS 4R. <b>▲</b> Rwy 4R helicopter visibility reduction below ¾ NA. Simultaneous approach authorized.</p>	<p>MALSR </p>	<p>MISSED APPROACH: Climb to 800 then climbing right turn to 4000 on heading 110° and LIT VORTAC R-089 to ATERS INT/LIT 16 DME and hold.</p>
--	-------------------	--

D-ATIS <b>125.65</b>	LITTLE ROCK APP CON <b>135.4 353.6</b>	ADAMS TOWER <b>118.7 257.8</b>	GND CON <b>121.9 339.8</b>	CLNC DEL <b>118.95</b>
-------------------------	---	-----------------------------------	-------------------------------	---------------------------



ELEV 266	<b>D</b> TDZE 260
----------	-------------------

CATEGORY	A	B	C	D
S-ILS 4R		510/40	250 (300-¾)	
S-LOC 4R	880/40	620 (700-¾)	880-1⅓	620 (700-1⅓)
<b>C</b> CIRCLING	880-1 614 (700-1)	1000-1 734 (800-1)	1180-2¾ 914 (1000-2¾)	1180-3 914 (1000-3)
OGRAY (DUAL VOR RECEIVERS OR DME REQUIRED)				
S-LOC 4R	780/40	520 (600-¾)	780/55	520 (600-1)
<b>C</b> CIRCLING	820-1 554 (600-1)	1000-1 734 (800-1)	1180-2¾ 914 (1000-2¾)	1180-3 914 (1000-3)



SC-1, 10 SEP 2020 to 08 OCT 2020

SC-1, 10 SEP 2020 to 08 OCT 2020