

|  |                        |   |
|--|------------------------|---|
| WAAS<br>CH <b>42811</b><br><b>W22A</b> | APP CRS<br><b>227°</b> | Rwy Idg <b>7200</b><br>TDZE <b>260</b><br>Apt Elev <b>266</b> |
|--|------------------------|---|

# RNAV (GPS) RWY 22L

BILL AND HILLARY CLINTON NATIONAL/ADAMS FIELD (LIT)

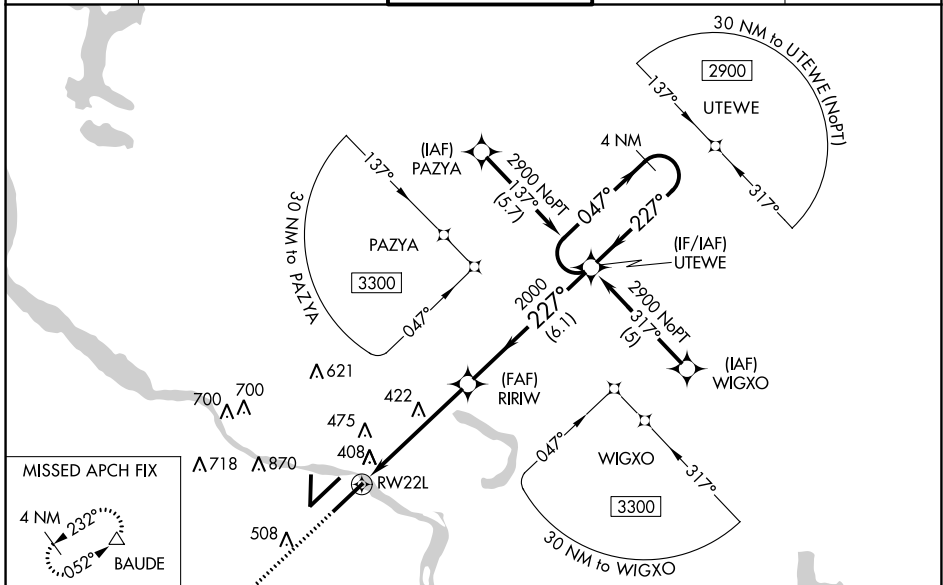
RNP APCH.

For uncompensated Baro-VNAV systems, LNAV/VNAV NA below -15°C or above 48°C.  
 ▼ Rwy 22L helicopter visibility reduction below 3/4 SM NA. Inop table does not apply to LPV, LNAV/VNAV or LNAV Cat C and D. For inop ALS, increase LNAV Cat A and B visibility to RVR 5000. Simultaneous approach authorized. LNAV procedure NA during simultaneous operations. Use of FD or AP required during simultaneous operations.

MALSF

MISSED APPROACH: Climb to 2900 direct MYNIE and on track 224° to BAUDE and hold.

|                         |   |                                   |                               |                           |
|-------------------------|---|-----------------------------------|-------------------------------|---------------------------|
| D-ATIS<br><b>125.65</b> | LITTLE ROCK APP CON<br><b>135.4 353.6</b> | ADAMS TOWER<br><b>118.7 257.8</b> | GND CON<br><b>121.9 339.8</b> | CLNC DEL<br><b>118.95</b> |
|-------------------------|---|-----------------------------------|-------------------------------|---------------------------|



MISSED APCH FIX

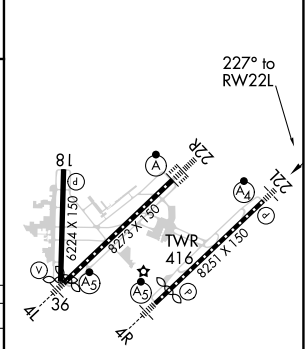
886

2900 MYNIE tr 224° BAUDE

UTEWE 4 NM Holding Pattern

\*LNAV only.

|          |          |          |
|----------|----------|----------|
| ELEV 266 | <b>D</b> | TDZE 260 |
|----------|----------|----------|



| CATEGORY          | A                    | B                     | C                              | D                      |
|-------------------|----------------------|-----------------------|--------------------------------|------------------------|
| LPV DA            |                      | 543/50                | 283 (300-1)                    |                        |
| LNAV/VNAV DA      |                      | 774-1 3/4             | 514 (600-1 3/4)                |                        |
| LNAV MDA          | 680/40               | 420 (500-3/4)         | 680/60                         | 420 (500-1/4)          |
| <b>C</b> CIRCLING | 820-1<br>554 (600-1) | 1000-1<br>734 (800-1) | 1180-2 3/4<br>914 (1000-2 3/4) | 1180-3<br>914 (1000-3) |

TDZ/CL Rwy 22R  
 MIRL Rwy 18-36  
 HIRL Rwy 4R-22L and 4L-22R

SC-1, 10 SEP 2020 to 08 OCT 2020

SC-1, 10 SEP 2020 to 08 OCT 2020