

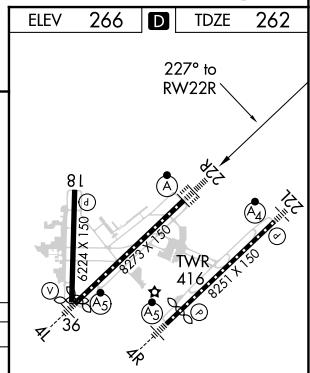
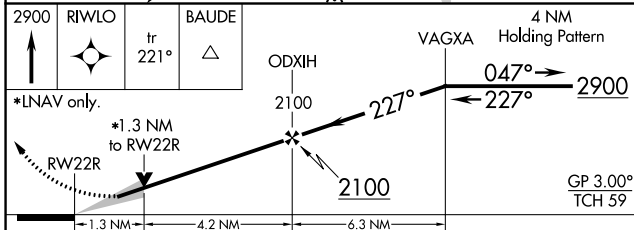
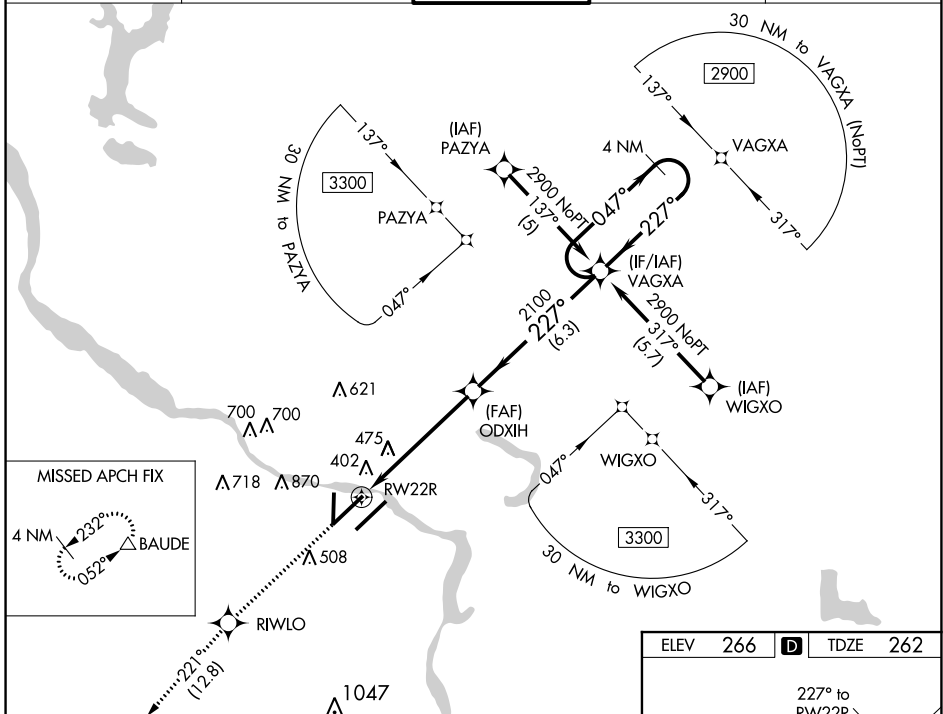
WAAS CH <b>93811</b> <b>W22B</b>	APP CRS <b>227°</b>	Rwy Idg TDZE Apt Elev	<b>8273</b> <b>262</b> <b>266</b>
----------------------------------------	------------------------	-----------------------------	-----------------------------------------

# RNAV (GPS) RWY 22R

BILL AND HILLARY CLINTON NATIONAL/ADAMS FIELD (LIT)

RNP APCH.	ALSF	MISSED APPROACH: Climb to 2900 direct RIWLO and on track 221° to BAUDE and hold.
For uncompensated Baro-VNAV systems, LNAV/VNAV NA below -1.5°C or above 48°C.		

D-ATIS <b>125.65</b>	LITTLE ROCK APP CON <b>135.4 353.6</b>	<b>ADAMS TOWER</b> <b>118.7 257.8</b>	GND CON <b>121.9 339.8</b>	CLNC DEL <b>118.95</b>
-------------------------	-------------------------------------------	------------------------------------------	-------------------------------	---------------------------



CATEGORY	A	B	C	D
LPV DA		462/18	200 (200-½)	
LNAV/VNAV DA		727/50	465 (500-1)	
LNAV MDA	740/24	478 (500-½)	740/50	478 (500-1)
<b>C</b> CIRCLING	820-1 554 (600-1)	1000-1 734 (800-1)	1180-2¾ 914 (1000-2¾)	1180-3 914 (1000-3)

TDZ/CL Rwy 22R  
MIRL Rwy 18-36  
HIRL Rwy 4L-22R and 4R-22L

# RNAV (GPS) RWY 22R

SC-1, 10 SEP 2020 to 08 OCT 2020

SC-1, 10 SEP 2020 to 08 OCT 2020