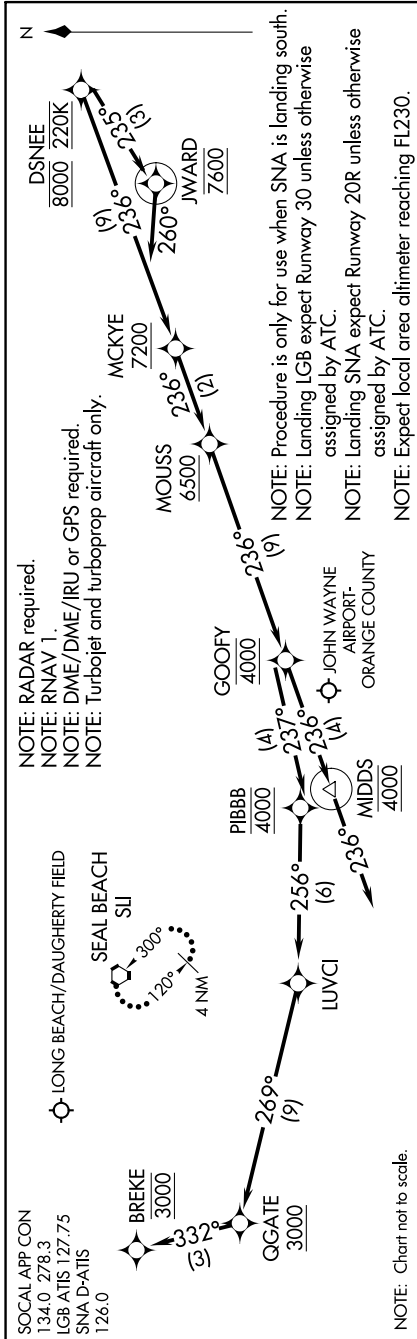


0200\_T020\_2020 to 0800\_T020\_2020 'S-WS



ARRIVAL ROUTE DESCRIPTION

**LANDING KLG B RUNWAY 12:** From DSNEE on track 236° to cross MCKYE at or above 7200, then on track 236° to cross MOUSS at or above 6500, then on track 236° to cross GOOFOY at 4000, then on track 237° to cross PIBBB at 4000, then on track 256° to LUVCI, then on track 269° to cross QGATE at or above 3000, then on track 332° to cross BREKE at or above 3000, then on track 332° to cross BREKE at or above 3000, then on track 332° to cross BREKE at or above 3000. Expect RNAV (RNP) RWY 12 approach.

**LANDING KLG B RUNWAYS 26R, 30:** From DSNEE on track 236° to cross MCKYE at or above 7200, then on track 236° to cross MOUSS at or above 6500, then on track 236° to cross GOOFOY at 4000, then on track 236° to cross MIDS at 4000, then on track 236° Expect ILS or RNAV (RNP) RWY 30 approach, or RNAV (RNP) RWY 26R approach.

**LANDING KSN A:** From DSNEE on track 235° to cross JWARD at 7600, then on heading 260° or as assigned by ATC. Expect RADAR vectors to ILS or RNAV (RNP) RWY 20R final approach course.

**LOST COMMUNICATIONS:** In the event of lost communications:  
**LANDING LGB RUNWAYS 26R, 30:** After MIDS proceed on the RNAV (RNP) RWY 30 or ILS RWY 30 approach.  
**LANDING LGB RUNWAY 12:** After BREKE proceed on the RNAV (RNP) RWY 12 approach, if unable approach, after MIDS/BREKE climb to 4000 direct SII VORTAC and hold.  
**LANDING SNA RUNWAY 20R:** After DSNEE proceed on the RNAV (RNP) RWY 20R approach. If unable approach, after DSNEE maintain 6000 direct SII VORTAC and hold.

SW-3, 10 SEP 2020 to 08 OCT 2020