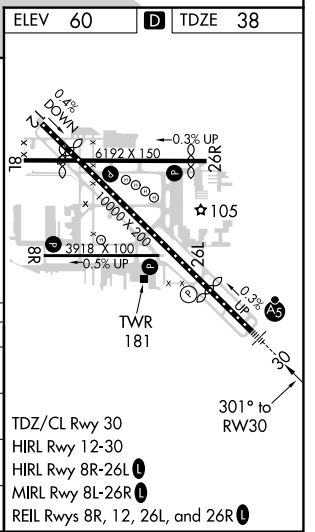
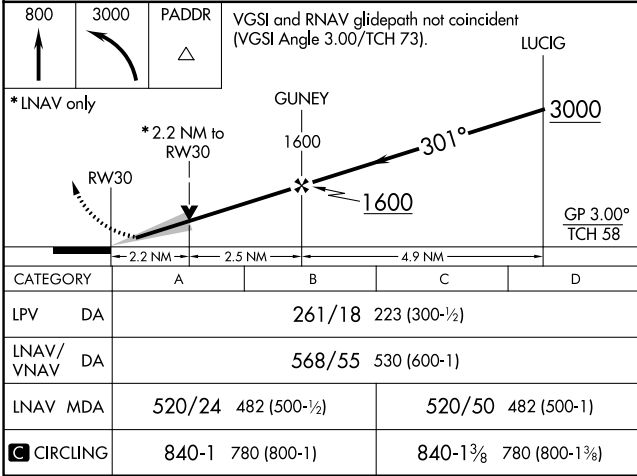
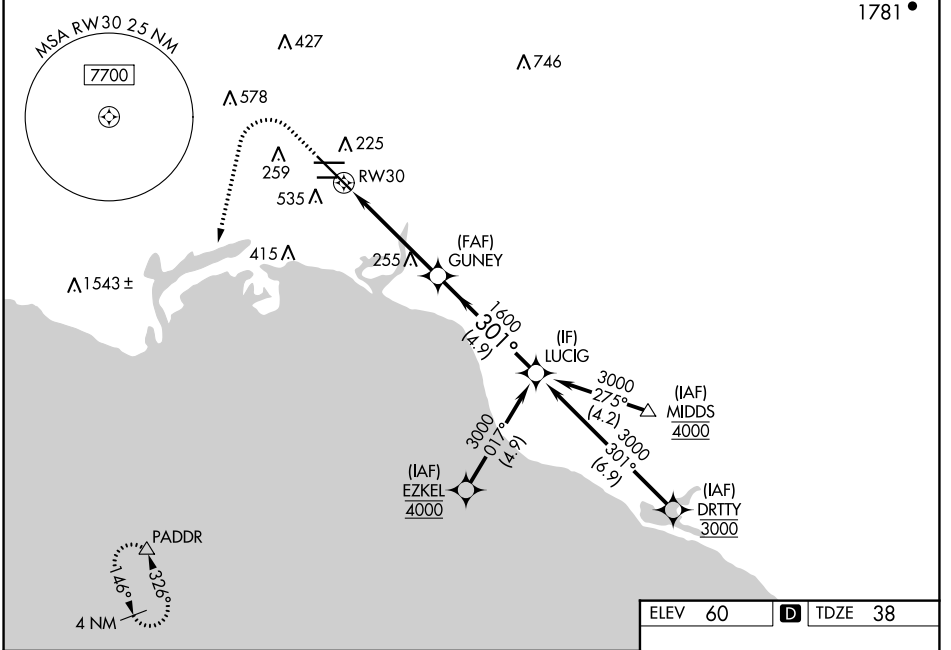


WAAS CH <b>99521</b> <b>W30A</b>	APP CRS <b>301°</b>	Rwy ldg TDZE Apt Elev	<b>7414</b> <b>38</b> <b>60</b>
--	------------------------	-----------------------------	---------------------------------------

# RNAV (GPS) Z RWY 30

LONG BEACH/DAUGHERTY FIELD (LGB)

RNP APCH. ▼ For uncompensated Baro-VNAV systems, LNAV/VNAV NA below 4°C or above 54°C. For inop ALS, increase LNAV Cat C and D visibility to 1½ SM.		MALS R AS	MISSED APPROACH: Climb to 800 then climbing left turn to 3000 direct PADDR and hold		
ATIS <b>127.75</b>	SOCAL APP CON <b>125.35 316.125</b>	LONG BEACH TOWER* <b>120.5 257.6</b> (Rwy 12) <b>119.4</b> (CTAF) <b>257.6</b> (Rwy 30)	GND CON <b>133.0 257.6</b>	CLNC DEL <b>118.15</b>	UNICOM <b>122.95</b>



SW-3, 10 SEP 2020 to 08 OCT 2020

SW-3, 10 SEP 2020 to 08 OCT 2020