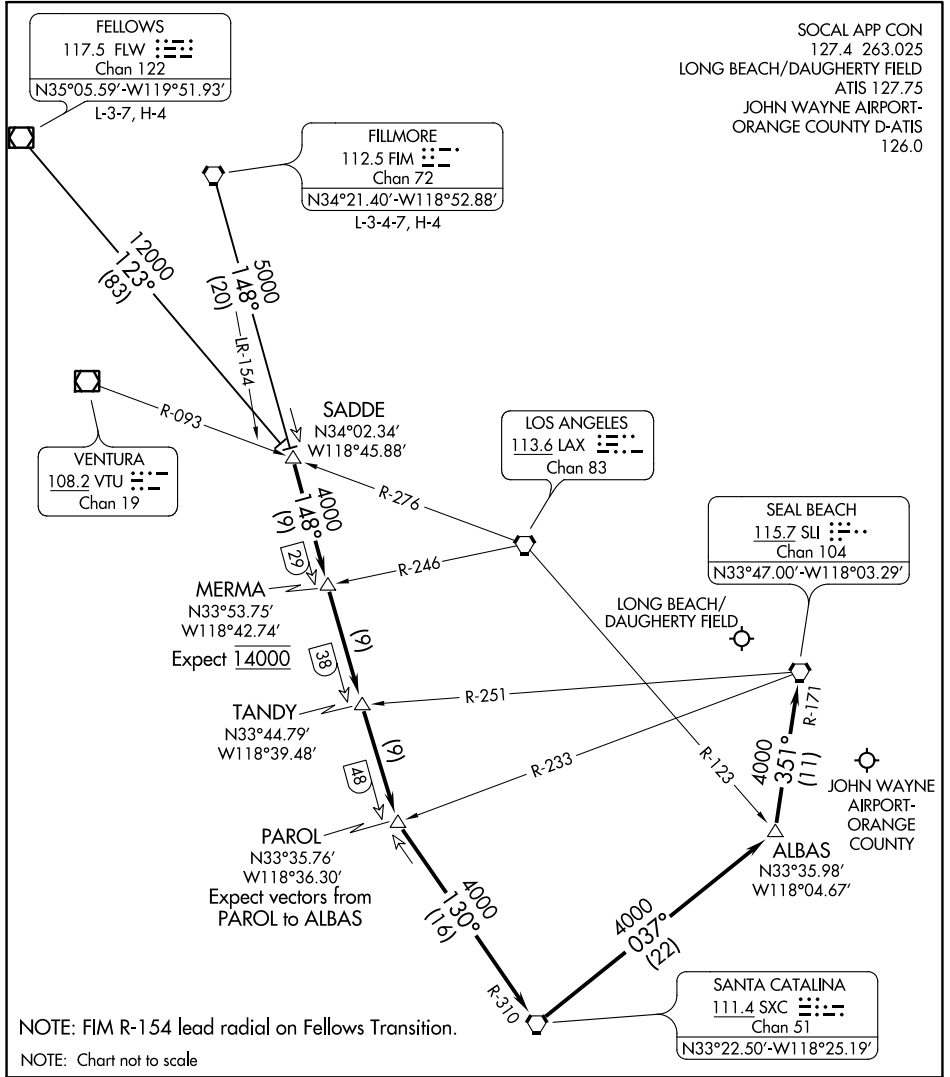


SW-3, 10 SEP 2020 to 08 OCT 2020

SW-3, 10 SEP 2020 to 08 OCT 2020



NOTE: FIM R-154 lead radial on Fellows Transition.  
 NOTE: Chart not to scale

ARRIVAL ROUTE DESCRIPTION

**FELLOWS TRANSITION (FLW.TANDY5):** From over FLW VOR/DME on FLW R-123 to SADDE. Thence. . . .

**FILLMORE TRANSITION (FIM.TANDY5):** From over FIM VORTAC on FIM R-148 to SADDE. Thence. . . .

. . . .From over SADDE on FIM R-148 to PAROL. From over PAROL on SXC R-310 to SXC VORTAC. Then from over SXC VORTAC on SXC R-037 to ALBAS. Then from ALBAS on SLI R-171 to SLI VORTAC.