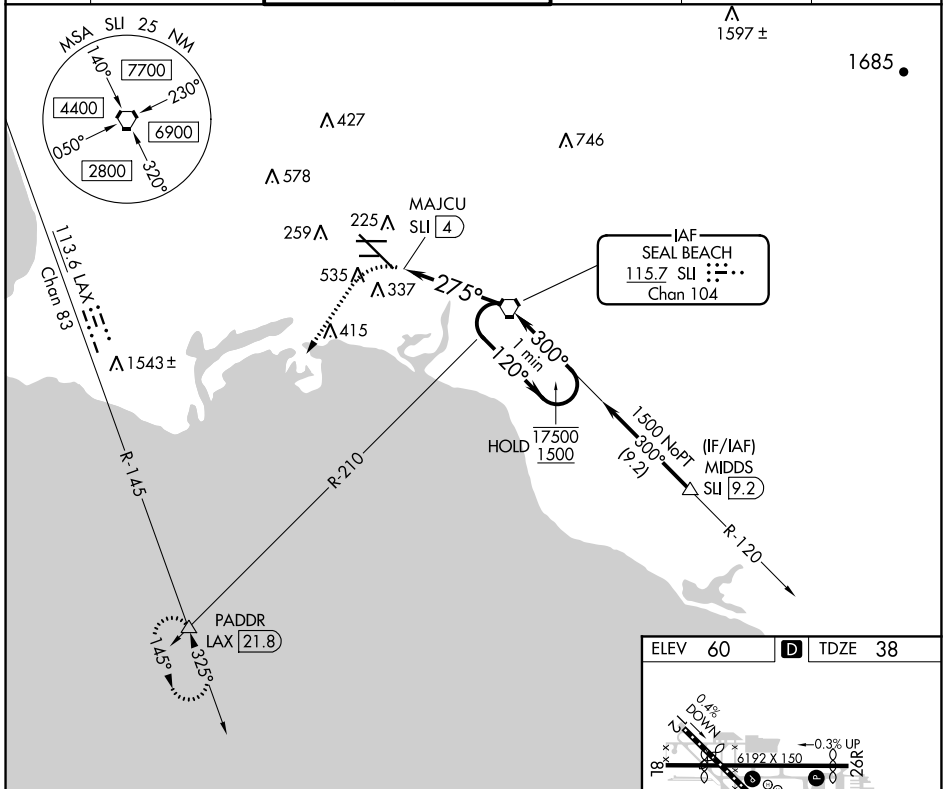


VORTAC SUI <b>115.7</b> Chan <b>104</b>	APP CRS <b>275°</b>	Rwy ldg TDZE Apt Elev	<b>7414</b> <b>38</b> <b>60</b>
---	------------------------	-----------------------------	---------------------------------------

# VOR or TACAN RWY 30

LONG BEACH/DAUGHERTY FIELD (LGB)

Rwy 30 helicopter visibility reduction below RVR 4000 NA. Inop table does not apply.	MISLSR 	MISSED APPROACH: Climbing left turn to 3000 on heading 200° and LAX VORTAC R-145 to PADDR INT/LAX 21.8 DME and hold.			
		ATIS <b>127.75</b>	SOCAL APP CON <b>125.35 316.125</b>	LONG BEACH TOWER* <b>120.5 257.6</b> (Rwy 12) <b>119.4</b> (CTAF) <b>257.6</b> (Rwy 30)	GND CON <b>133.0 257.6</b>



SW-3, 10 SEP 2020 to 08 OCT 2020

SW-3, 10 SEP 2020 to 08 OCT 2020

