

ZOOMM THREE DEPARTURE (RNAV)

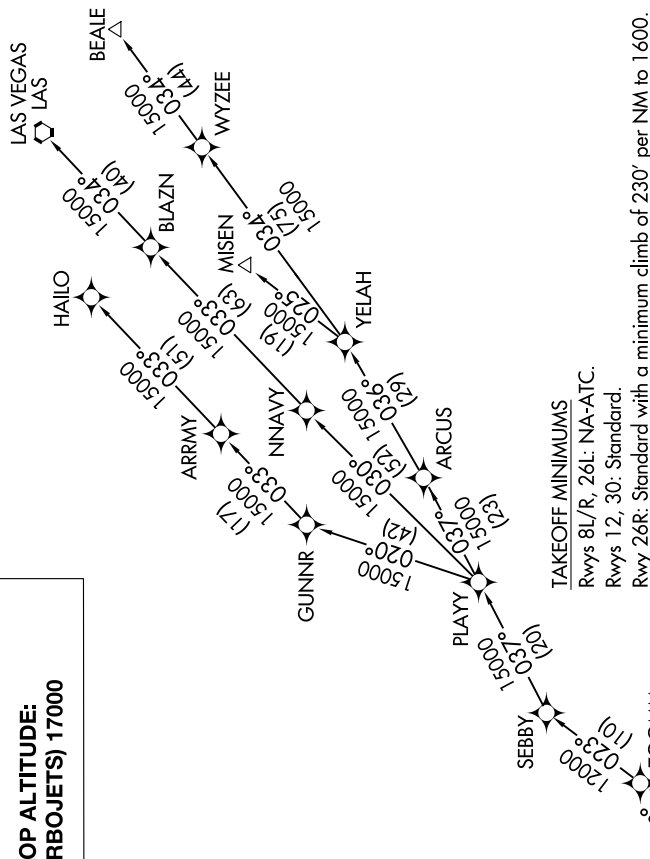
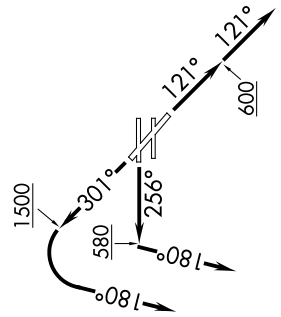
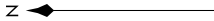
AL-236 (FAA)

LONG BEACH/DAUGHERTY FIELD (LGB)
LONG BEACH, CALIFORNIA

SW-3, 10 SEP 2020 to 08 OCT 2020

**TOP ALTITUDE:
(TURBOJETS) 17000**

- ATIS 127.75
- CLNC DEL 118.15
- GND CON 133.0 257.6
- SOCAL DEP CON 125.35 316.125 (Rwy 12)
- 127.2 269.6 (Rwys 26R, 30)



TAKEOFF MINIMUMS
 Rwys 8L/R, 26L: NA-ATC.
 Rwys 12, 30: Standard.
 Rwy 26R: Standard with a minimum climb of 230' per NM to 1600.

- NOTE: RADAR required.
- NOTE: RNAV 1
- NOTE: DME/DME/IRU or GPS required.
- NOTE: Turbojet only.
- NOTE: MISEN TRANSITION restricted to aircraft landing LAS terminal area.
- NOTE: HAILO/ LAS/ NNAV transitions ATC only.

(NARRATIVE ON FOLLOWING PAGE)

NOTE: Chart not to scale.

SW-3, 10 SEP 2020 to 08 OCT 2020