

# ANJLL FOUR ARRIVAL (RNAV)

AL-237 (FAA)

LOS ANGELES INTL (LAX)  
LOS ANGELES, CALIFORNIA

SW-3, 10 SEP 2020 to 08 OCT 2020

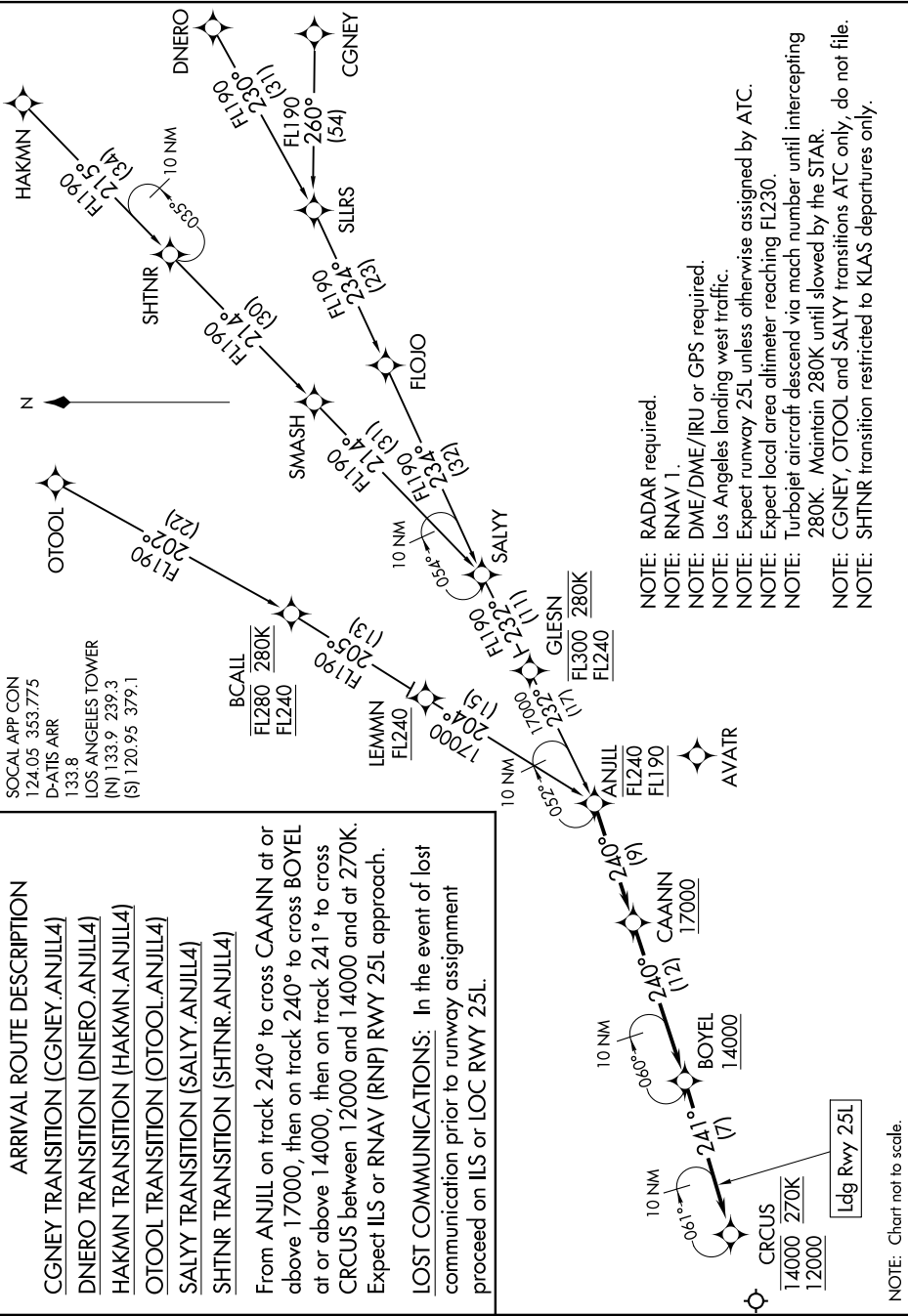
### ARRIVAL ROUTE DESCRIPTION

- CGNEY TRANSITION (CGNEY.ANJLL4)
- DNERO TRANSITION (DNERO.ANJLL4)
- HAKMN TRANSITION (HAKMN.ANJLL4)
- OTOOL TRANSITION (OTOOL.ANJLL4)
- SALYY TRANSITION (SALYY.ANJLL4)
- SHTNR TRANSITION (SHTNR.ANJLL4)

From ANJLL on track 240° to cross CAANN at or above 17000, then on track 240° to cross BOYEL at or above 14000, then on track 241° to cross CRCUS between 12000 and 14000 and at 270K. Expect ILS or RNAV (RNP) RWY 25L approach.

**LOST COMMUNICATIONS:** In the event of lost communication prior to runway assignment proceed on ILS or LOC RWY 25L.

SOCAL APP CON  
124.05 353.775  
D-ATIS ARR  
133.8  
LOS ANGELES TOWER  
(N) 133.9 239.3  
(S) 120.95 379.1



NOTE: RADAR required.

NOTE: RNAV 1.

NOTE: DME/DME/IRU or GPS required.

NOTE: Los Angeles landing west traffic.

NOTE: Expect runway 25L unless otherwise assigned by ATC.

NOTE: Expect local area altimeter reaching FL230.

NOTE: Turbojet aircraft descend via mach number until intercepting 280K. Maintain 280K until slowed by the STAR.

NOTE: CGNEY, OTOOL and SALYY transitions ATC only, do not file.

NOTE: SHTNR transition restricted to KLAS departures only.

# ANJLL FOUR ARRIVAL (RNAV)

LOS ANGELES, CALIFORNIA  
LOS ANGELES INTL (LAX)

SW-3, 10 SEP 2020 to 08 OCT 2020

NOTE: Chart not to scale.