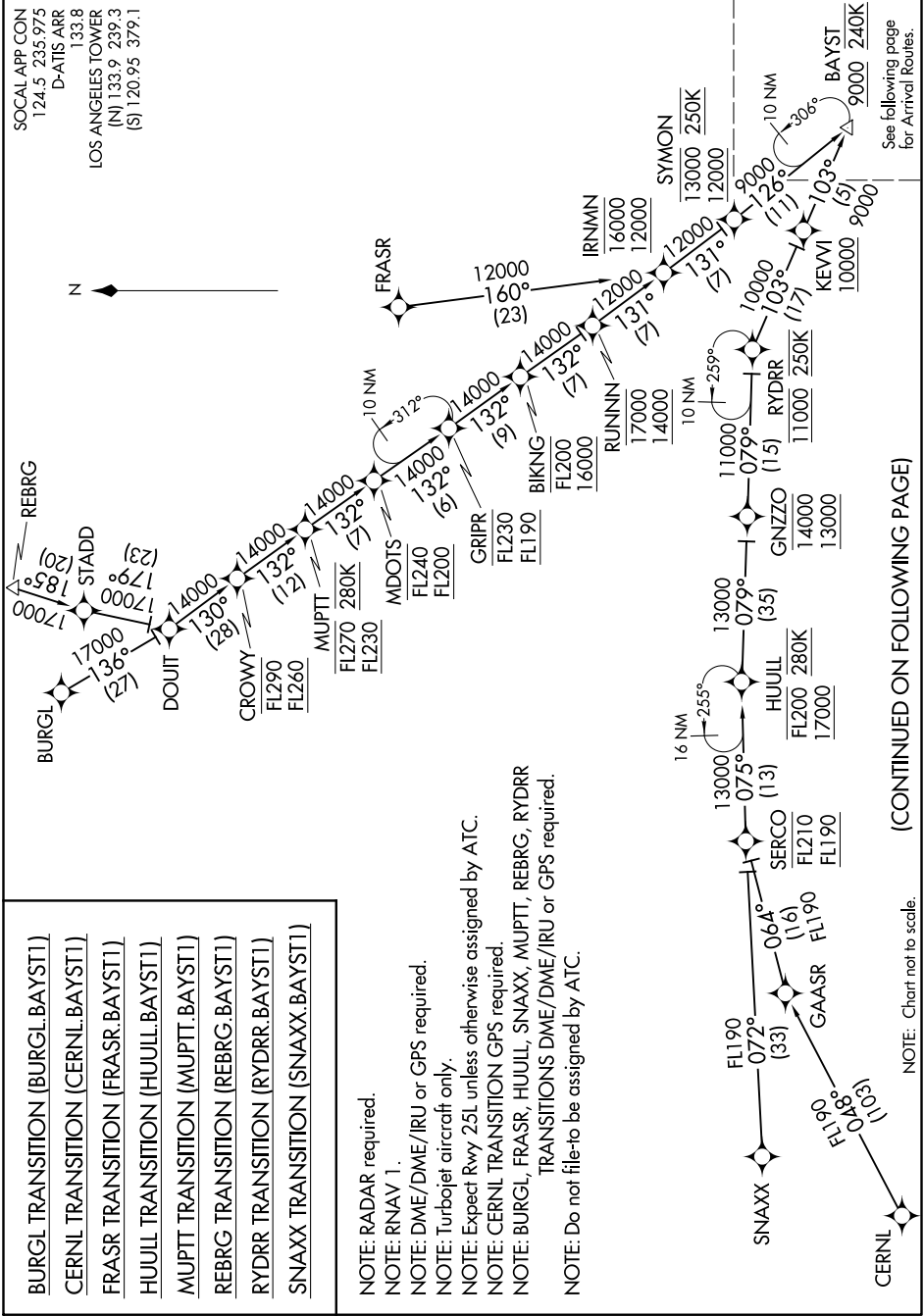


SW-3, 10 SEP 2020 to 08 OCT 2020



- BURGL TRANSITION (BURGL.BAYST1)
- CERNL TRANSITION (CERNL.BAYST1)
- FRASR TRANSITION (FRASR.BAYST1)
- HUJLL TRANSITION (HUJLL.BAYST1)
- MUPTT TRANSITION (MUPTT.BAYST1)
- REBRG TRANSITION (REBRG.BAYST1)
- RYDRR TRANSITION (RYDRR.BAYST1)
- SNAXX TRANSITION (SNAXX.BAYST1)

NOTE: RADAR required.  
 NOTE: RNAV 1.  
 NOTE: DME/DME/IRU or GPS required.  
 NOTE: Turbojet aircraft only.  
 NOTE: Expect Rwy 25L unless otherwise assigned by ATC.  
 NOTE: CERNL TRANSITION GPS required.  
 NOTE: BURGL, FRASR, HUJLL, SNAXX, MUPTT, REBRG, RYDRR TRANSITIONS DME/DME/IRU or GPS required.  
 NOTE: Do not file-to be assigned by ATC.

(CONTINUED ON FOLLOWING PAGE)

NOTE: Chart not to scale.

See following page for Arrival Routes.

SW-3, 10 SEP 2020 to 08 OCT 2020