

(GOATZ .GOATZ1) 17117

GOATZ ONE ARRIVAL (RNAV)

AL-237 (FAA)

LOS ANGELES INTL (LAX)
LOS ANGELES, CALIFORNIA

SOCAL APP CON
127.4 263.025
LOS ANGELES TOWER
(N) 133.9 239.3
(S) 120.95 379.1



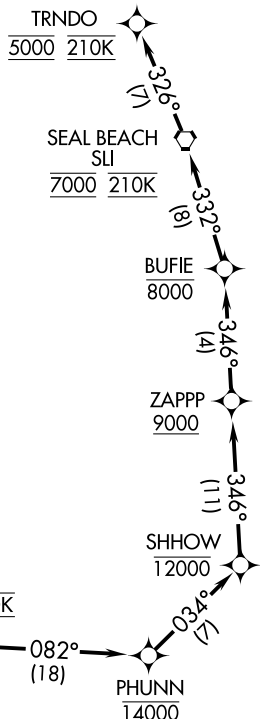
ARRIVAL ROUTE DESCRIPTION

FICKY TRANSITION (FICKY.GOATZ1)

From GOATZ on track 038° to cross DIRBY between 16000 and FL190 and at 280K, then on track 082° to cross PHUNN at or below 14000, then on track 034° to cross SHHOW at or below 12000, then on track 346° to cross ZAPPP at or above 9000, then on track 346° to cross BUFIE at or below 8000, then on track 332° to cross SLI VORTAC at 7000 and at 210K, then on track 326° to cross TRNDO at 5000 and at 210K. Expect ILS or RNAV (RNP) RWY 25L.

LOST COMMUNICATIONS

In event of lost communication, proceed on the RNAV (RNP) RWY 25L approach.



- NOTE: RADAR required.
- NOTE: RNAV 1.
- NOTE: GPS required.
- NOTE: Turbojet aircraft only.
- NOTE: Expect Rwy 25L unless otherwise assigned by ATC.
- NOTE: Non RNP-AR aircraft expect RADAR vectors to final approach course upon reaching SLI VORTAC.

NOTE: Chart not to scale.

GOATZ ONE ARRIVAL (RNAV)

(GOATZ .GOATZ1) 27APR17

LOS ANGELES, CALIFORNIA
LOS ANGELES INTL (LAX)

SW-3, 10 SEP 2020 to 08 OCT 2020

SW-3, 10 SEP 2020 to 08 OCT 2020