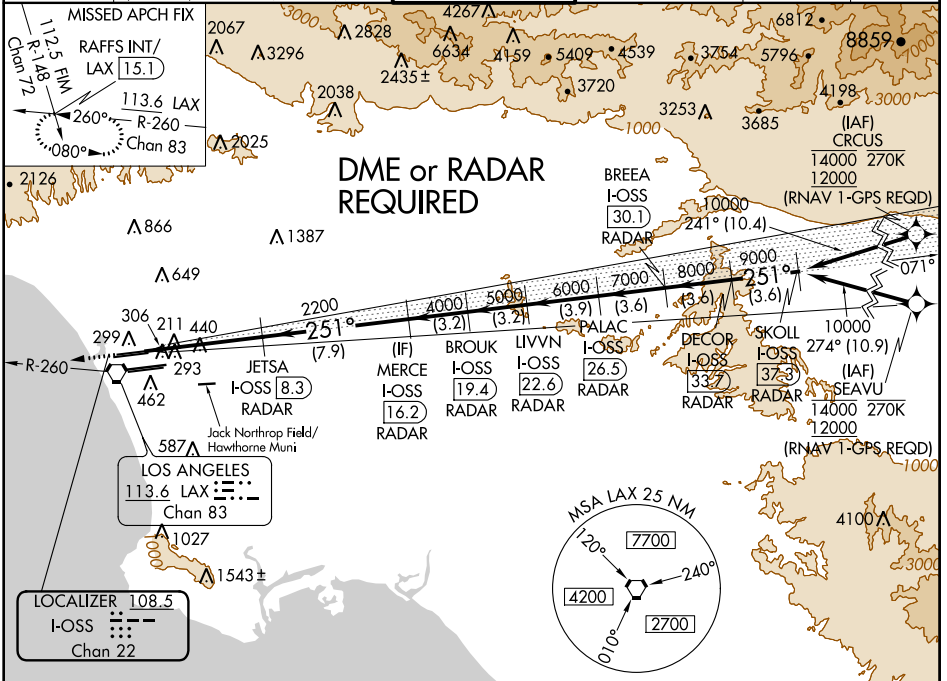


LOC/DME I-OSS 108.5 Chan 22	APP CRS 251°	Rwy Idg TDZE Apt Elev	8926 122 128
--	------------------------	-----------------------------	---

ILS RWY 24R (CAT II & III)

LOS ANGELES INTL (LAX)

D-ATIS ARR 133.8 DEP 135.65	SOCAL APP CON (APCH FM WEST) 124.3 363.2 124.5 235.975 (225°-044°)	LOS ANGELES TOWER N 133.9 239.3 S 120.95 379.1	GND CON N 121.65 327.0 S 121.75 327.0 W 121.4 327.0	CLNC DEL 120.35 327.0	CPDLC



ELEV 128	TDZE 122	2000 ↑ hdg 251°	LAX R-260	RAFFS INT	VGSI and ILS glidepath not coincident (VGSI Angle 3.00/TCH 73).	SKOLL I-OSS 37.3				
		JETSA I-OSS 8.3	MERCER I-OSS 19.4	BROUK I-OSS 22.6	LIVVN I-OSS 26.5	PALAC I-OSS 30.1	DECOR I-OSS 33.7	SKOLL I-OSS 37.3		
		10.25 NM	6.4 NM	7.9 NM	3.2 NM	3.2 NM	3.9 NM	3.6 NM	3.6 NM	3.6 NM
CATEGORY		A		B		C		D		
S-ILS 24R		CAT II RA 118/12 100 DA 222								
S-ILS 24R		CAT III RVR 06								
CATEGORY II & III ILS - SPECIAL AIRCREW & AIRCRAFT CERTIFICATION REQUIRED										

LOS ANGELES, CALIFORNIA
Amdt 26 12OCT17
TDZ/CL Rwy 6R, 7L, 24R, and 25L
HIRL all Rwy

33°57'N-118°24'W

LOS ANGELES INTL (LAX)

ILS RWY 24R (CAT II & III)

SW-3, 10 SEP 2020 to 08 OCT 2020

SW-3, 10 SEP 2020 to 08 OCT 2020