

LOC/DME I-OSS 108.5 Chan 22	APP CRS 251°	Rwy Idg TDZE Apt Elev	24R 8926 122 128	24L 9483 123 128
--	------------------------	-----------------------------	--	--

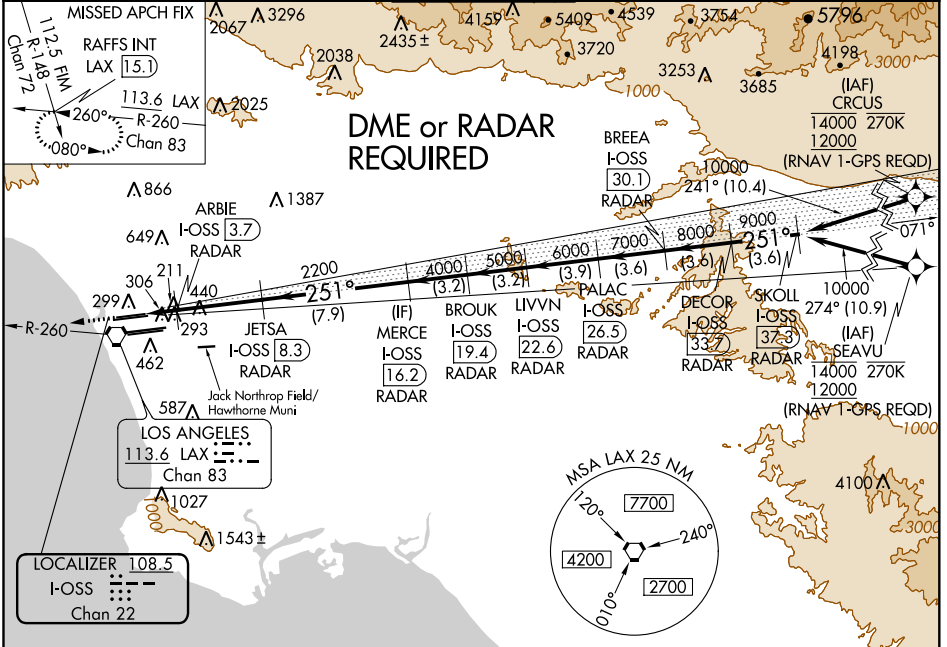
ILS or LOC RWY 24R

LOS ANGELES INTL (LAX)

▼ DME or RADAR required. LOC procedure NA during simultaneous operations with HHR LOC RWY 25. Simultaneous approach authorized. Simultaneous approach authorized with HHR. For inop ALS, increase S-LOC 24R Cat C/D visibility to RVR 5500.

ALSF-2 Rwy 24R 	MALSR Rwy 24L 	MISSED APPROACH: Climb to 2000 on heading 251° and LAX VORTAC R-260 to RAFFS INT/LAX 15.1 DME and hold.
-----------------------	----------------------	---

D-ATIS ARR 133.8 DEP 135.65	SOCAL APP CON 124.3 363.2 124.9 269.0 (APCH FM WEST) 124.5 235.975 128.5 360.7 (090°-224°) (045°-089°)	LOS ANGELES TOWER N 133.9 239.3 S 120.95 379.1	GND CON N 121.65 327.0 S 121.75 327.0 W 121.4 327.0	CLNC DEL 120.35 327.0	CPDLC
---	---	--	---	---	-------



SW-3, 10 SEP 2020 to 08 OCT 2020

SW-3, 10 SEP 2020 to 08 OCT 2020

ELEV 128	TDZE 24R 122 TDZE 24L 123	2000 hdg 251°	LAX R-260	RAFFS INT	VGSI and ILS glidepath not coincident (VGSI Angle 3.00/TCH 73).	SKOLL I-OSS 37.3 DECOR I-OSS 33.7 BREA I-OSS 30.1 PALAC I-OSS 26.5 LIVVN I-OSS 22.6 BROUK I-OSS 19.4 MERC I-OSS 16.2 JETSA I-OSS 8.3 ARBIE I-OSS 3.7
		*LOC only		I-OSS 2.9 I-OSS 2 I-OSS 2.9 I-OSS 2		2200 4000 5000 6000 7000 8000 9000 10000 GS 3.00° TCH 55
TDZ/CL Rwy 6R, 7L, 24R, and 25L HIRL all rwy		FAF to MAP 6.4 NM		CATEGORY		A
Knots 60 90 120 150 180		Min:Sec 6:24 4:16 3:12 2:34 2:08		S-ILS 24R		322/18 200 (200-1/2)
		S-LOC 24R		480/24 358 (400-1/2)		480/30 358 (400-3/8)
		SIDESTEP 24L		500/55 377 (400-1)		500-1 1/2 377 (400-1 1/2)