

LOC/DME I-LAX	APP CRS	Rwy Idg	25L	25R
109.9	251°	TDZE	11095	11134
Chan 36		Apt Elev	104	104

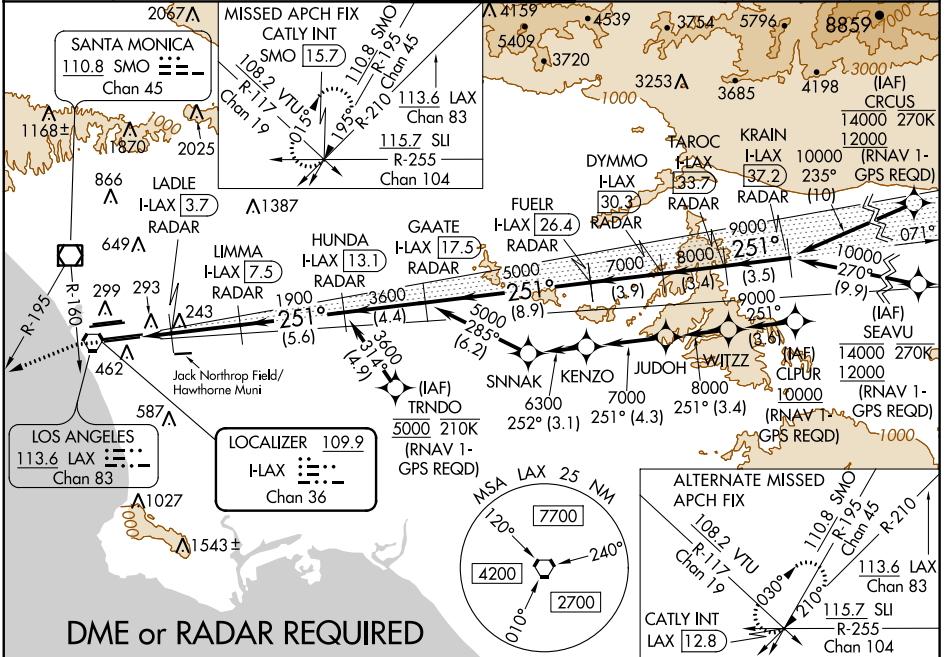
ILS or LOC RWY 25L

LOS ANGELES INTL (LAX)

▼ DME or RADAR required. Simultaneous approach authorized. Simultaneous approach authorized with HHR. LOC procedure NA during simultaneous operations with HHR LOC RWY 25.

ALSIF-2 Rwy 25L	MALSR Rwy 25R	MISSED APPROACH: Climb to 1000 on heading 251° until crossing the SMO R-160, then left turn on heading 236° and on the SMO R-195 to CATLY INT/SMO 15.7 DME and hold.
-----------------	---------------	--

D-ATIS ARR 133.8 DEP 135.65	SOCAL APP CON 124.3 363.2 (APCH FM WEST) 124.5 235.975 (225°-044°)	124.9 269.0 (090°-224°) 128.5 360.7 (045°-089°)	LOS ANGELES TOWER N 133.9 239.3 S 120.95 379.1	GND CON N 121.65 327.0 S 121.75 327.0 W 121.4 327.0	CLNC DEL 120.35 327.0	CPDLC
--	--	--	--	---	---	-------



SW-3, 10 SEP 2020 to 08 OCT 2020

SW-3, 10 SEP 2020 to 08 OCT 2020

2000 hdg 251°	SMO R-160	SMO R-195	CATLY INT	VGSi and ILS glidepath not coincident (VGSi Angle 3.00/TCH 70).				ELEV 128	TDZE 25L 104	TDZE 25R 104		
*LOC only	LADLE I-LAX 3.7	LIMMA I-LAX 7.5	HUNDA I-LAX 13.1	GAATE I-LAX 17.5	FUELR I-LAX 26.4	DYMMO I-LAX 30.3	TAROC I-LAX 33.7	KRAIN I-LAX 37.2				
	1900	1900	3600	5000	7000	8000	9000	10000	GS 3.00° TCH 54			
	1.2	0.6	3.7 NM	5.6 NM	4.4 NM	8.9 NM	3.9 NM	3.4 NM	3.5 NM			
CATEGORY	A			B		C		D				
S-ILS 25L	304/18			200 (200-½)								
S-LOC 25L	540/24		436 (500-½)		540/40		436 (500-¾)					
SIDESTEP 25R	540/55			436 (500-1)		540-1½		436 (500-1½)				
TDZ/CL Rwy 6R, 7L, 24R, and 25L HIRL all Rwy's								FAF to MAP 5.5 NM				
Knots								60	90	120	150	180
Min:Sec								5:30	3:40	2:45	2:12	1:50