

LAXX ONE DEPARTURE

AL-237 (FAA)

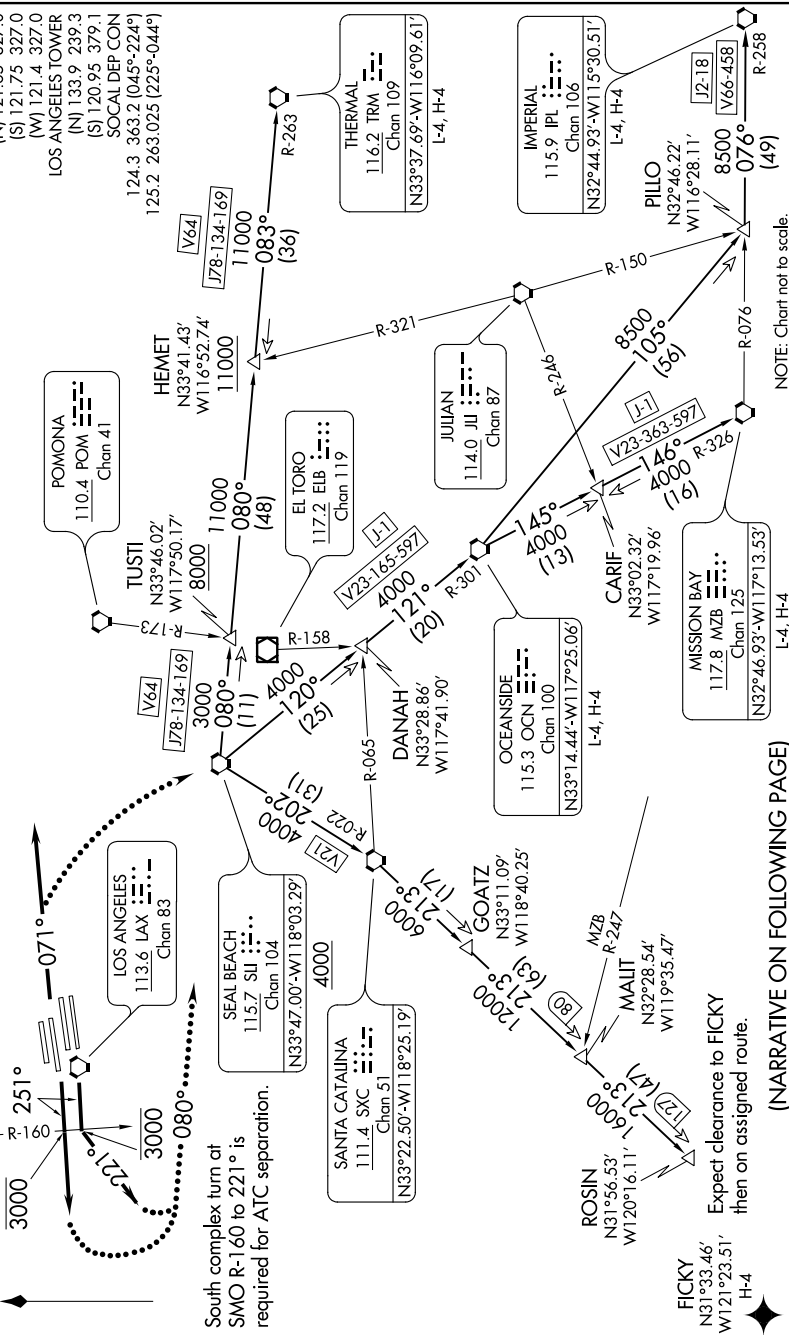
LOS ANGELES INTL (LAX)
LOS ANGELES, CALIFORNIA

SW-3, 10 SEP 2020 to 08 OCT 2020

**TOP ALTITUDE:
ASSIGNED BY ATC**

SANTA MONICA
110.8 SMO
Chan 45

TAKEOFF MINIMUMS
Rwy 6L/R, 7L/R, 24L/R, 25L/R: Standard.



NOTE: This departure is for turbojet aircraft only.
NOTE: RADAR and DME required.

D-ATIS DEP 135.65
CLNC DEL 120.35 327.0
CPDLC GND CON (N) 121.65 327.0 (S) 121.75 327.0 (W) 121.4 327.0
LOS ANGELES TOWER (N) 133.9 239.3 (S) 120.95 379.1 (W) 120.95 379.1
SOCAL DEP CON 124.3 363.2 (045°-224°) 125.2 263.025 (225°-044°)

South complex turn at SMO R-160 to 221° is required for ATC separation.

FICKY N31°33.46' W121°23.51' H-4
Expect clearance to FICKY then on assigned route.

(NARRATIVE ON FOLLOWING PAGE)

NOTE: Chart not to scale.

SW-3, 10 SEP 2020 to 08 OCT 2020