

# OSHNN NINE DEPARTURE (RNAV)

AL-237 (FAA)

LOS ANGELES INTL (LAX)  
LOS ANGELES, CALIFORNIA

SW-3, 10 SEP 2020 to 08 OCT 2020

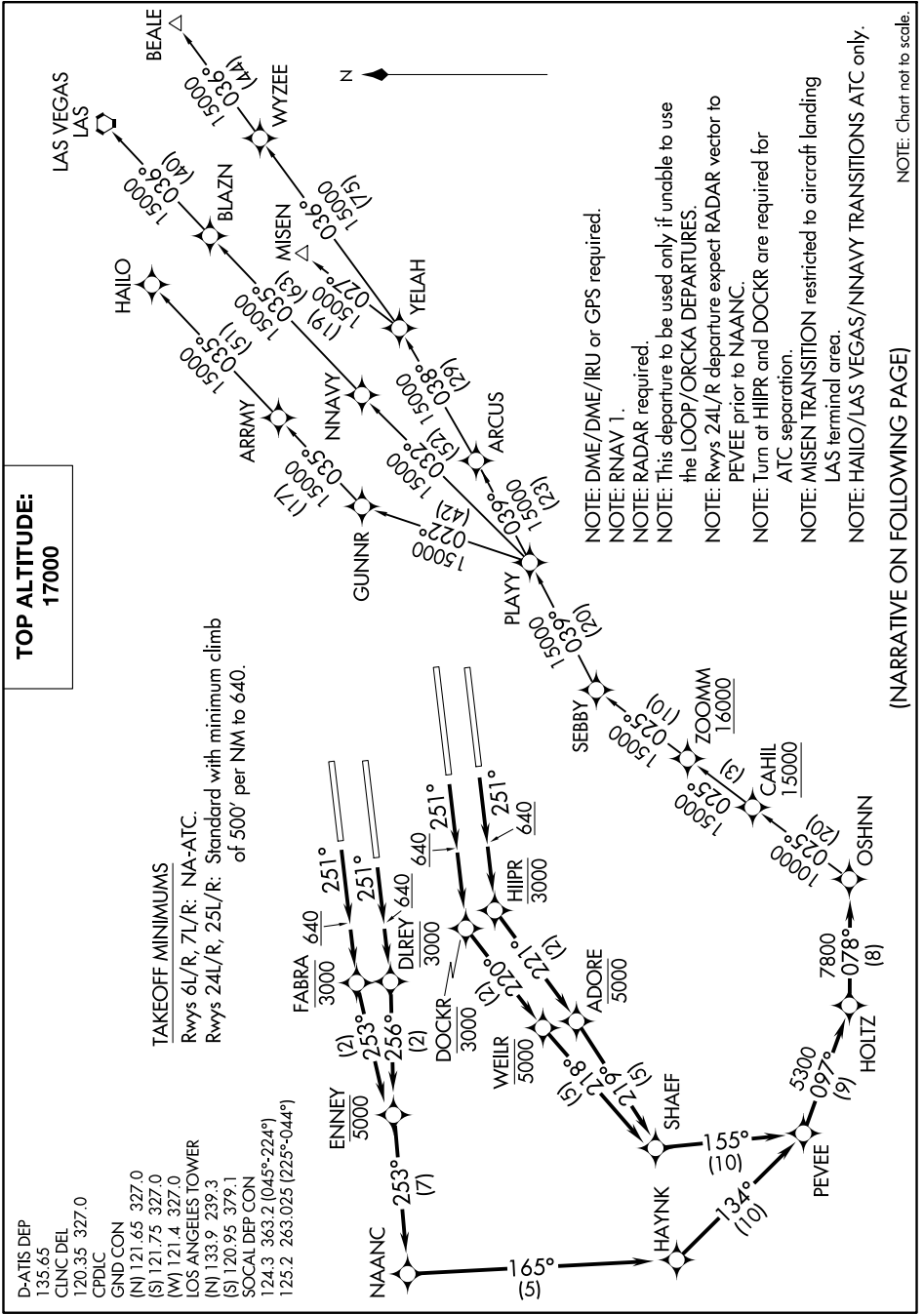
**TOP ALTITUDE:  
17000**

**TAKEOFF MINIMUMS**  
Rwys 6L/R, 7L/R: NA-ATC.  
Rwys 24L/R: 25L/R: Standard with minimum climb  
of 500' per NM to 640.

- D-ATIS DEP 135.65
- CINC DEL 120.35 327.0
- CPDLC 120.35 327.0
- GND CON (N) 121.65 327.0
- (S) 121.75 327.0
- (W) 121.4 327.0
- LOS ANGELES TOWER (N) 133.9 239.3
- (S) 120.95 379.1
- SOCAL DEP CON 124.3 363.2 (045°-224°)
- 125.2 263.025 (225°-044°)

# OSHNN NINE DEPARTURE (RNAV)

LOS ANGELES, CALIFORNIA  
LOS ANGELES INTL (LAX)



(NARRATIVE ON FOLLOWING PAGE)

NOTE: Chart not to scale.

SW-3, 10 SEP 2020 to 08 OCT 2020