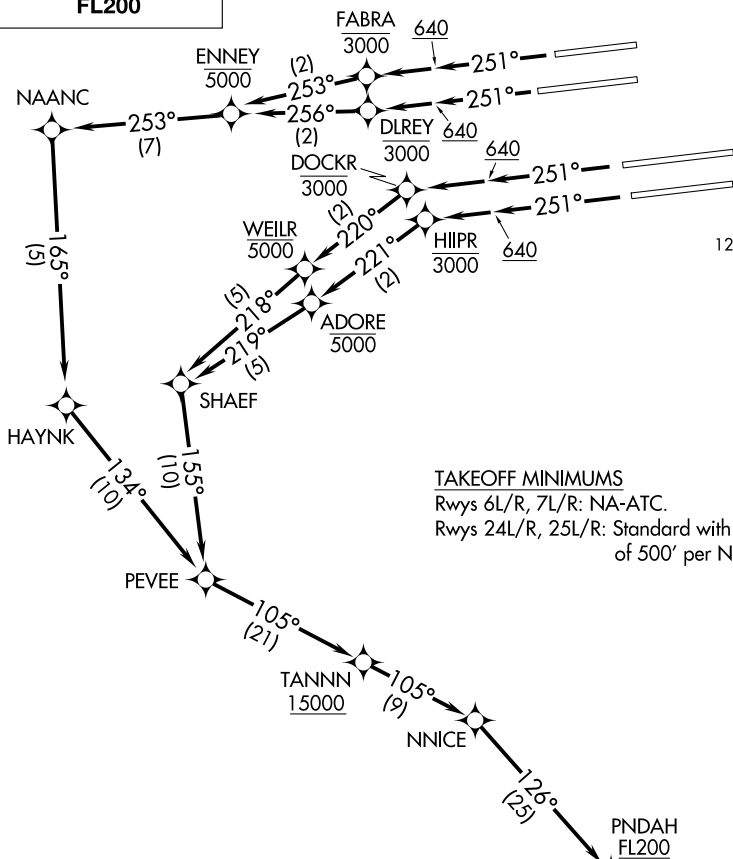


# PNDHA TWO DEPARTURE (RNAV)

AL-237 (FAA)

LOS ANGELES INTL (LAX)  
LOS ANGELES, CALIFORNIA

**TOP ALTITUDE:  
FL200**



D-ATIS DEP 135.65  
 CLNC DEL 120.35 327.0  
 CPDLC  
 GND CON (N) 121.65 327.0  
 (S) 121.75 327.0  
 (W) 121.4 327.0  
 LOS ANGELES TOWER (N) 133.9 239.3  
 (S) 120.95 379.1  
 SOCAL DEP CON 124.3 363.2 (045°-224°)  
 125.2 263.025 (225°-044°)

### TAKEOFF MINIMUMS

Rwys 6L/R, 7L/R: NA-ATC.

Rwys 24L/R, 25L/R: Standard with minimum climb of 500' per NM to 640.

- NOTE: DME/DME/IRU or GPS required.
- NOTE: RADAR required.
- NOTE: RNAV 1.
- NOTE: Turbojet aircraft only.
- NOTE: Turn at HIIPR and DOCKR are required for ATC separation.

(NARRATIVE ON FOLLOWING PAGE)

NOTE: Chart not to scale.

# PNDHA TWO DEPARTURE (RNAV)

LOS ANGELES, CALIFORNIA  
LOS ANGELES INTL (LAX)

SW-3, 10 SEP 2020 to 08 OCT 2020

SW-3, 10 SEP 2020 to 08 OCT 2020