

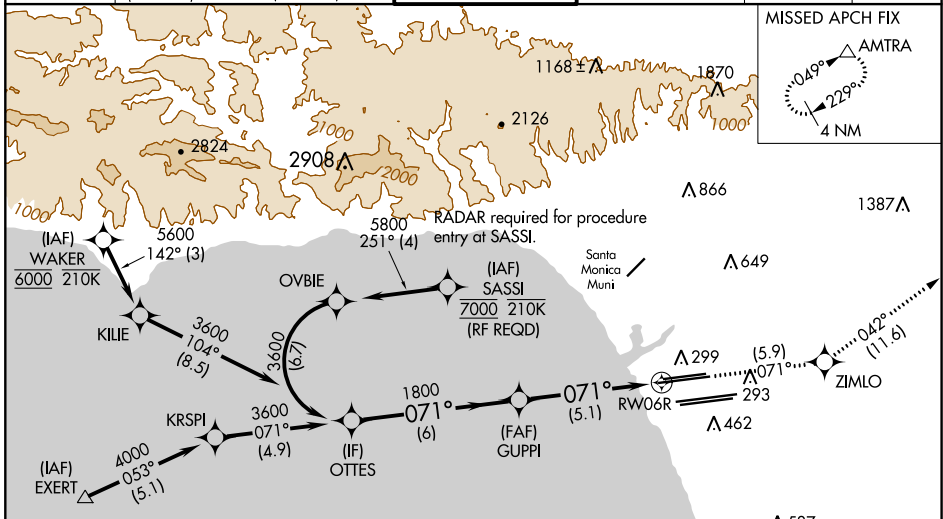
APP CRS 071°	Rwy Idg TDZE Apt Elev	9748 116 128
------------------------	-----------------------------	---

RNAV (RNP) Z RWY 6R

LOS ANGELES INTL (LAX)

<p>▼ For uncompensated Baro-VNAV systems, procedure NA below 5°C (41°F) or above 54°C (130°F). GPS required. Simultaneous approach authorized. For inop ALS, increase RNP 0.30 all Cats visibility to RVR 6000.</p>	<p>MALSR</p>	<p>MISSED APPROACH: Climb to 3000 on track 071° to ZIMLO and on track 042° to AMTRA and hold.</p>
---	--------------	---

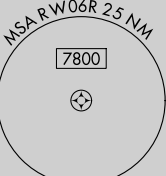
D-ATIS ARR 133.8 DEP 135.65	SOCAL APP CON 124.3 363.2 (APCH FM WEST) 124.5 235.975 (225°-044°)	124.9 269.0 (090°-224°) 128.5 360.7 (045°-089°)	LOS ANGELES TOWER N 133.9 239.3 S 120.95 379.1	GND CON N 121.65 327.0 S 121.75 327.0 W 121.4 327.0	CLNC DEL 120.35 327.0	CPDLC
---	--	--	--	---	---	-------



SW-3, 10 SEP 2020 to 08 OCT 2020

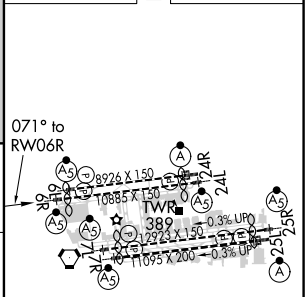
SW-3, 10 SEP 2020 to 08 OCT 2020

Procedure NA for arrivals at EXERT on V25 westbound and V27 northwest bound.



ELEV 128	D TDZE 116
----------	-------------------

<p>VGSI and RNAV glidepath not coincident (VGSI Angle 3.00/TCH 69).</p>			
<p>OTTES</p> <p>3600</p> <p>GP 3.00° TCH 53</p>	<p>GUPPI</p> <p>1800</p>	<p>ZIMLO</p> <p>tr 071°</p>	<p>AMTRA</p> <p>tr 042°</p>
CATEGORY	A	B	C
RNP 0.30	DA	471/40	355 (400-¾)



AUTHORIZATION REQUIRED

TDZ/CL Rwy 6R, 7L, 24R, and 25L
HIRL all Rwy's