

WAAS CH 69307 W24A	APP CRS 251°	Rwy Idg TDZE Apt Elev	8926 122 128
--	------------------------	-----------------------------	---

RNAV (GPS) Y RWY 24R

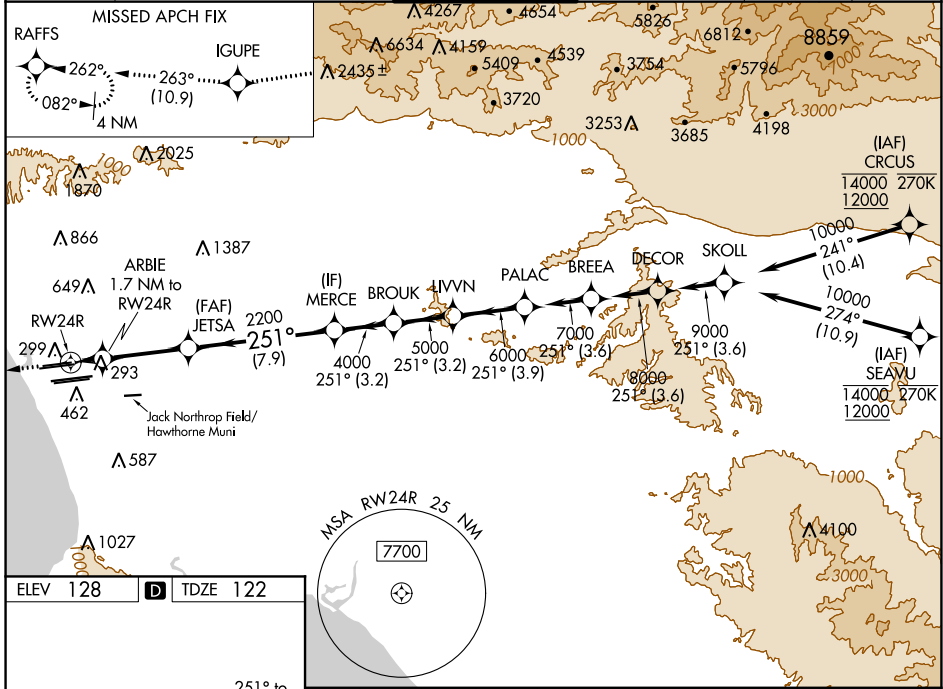
LOS ANGELES INTL (LAX)

▼ For uncompensated Baro-VNAV systems, LNAV/VNAV NA below 6°C (43°F) or above 54°C (130°F). DME/DME RNP-0.3 NA. Simultaneous approach authorized. Simultaneous approach authorized with HHR. LNAV procedure NA during simultaneous operations. Use of FD or AP providing RNAV track guidance required during simultaneous operations. For inop ALS, increase LNAV/VNAV all Cnts visibility to 1½ SM, and LNAV Cat C/D visibility to 1¾ SM.



MISSED APPROACH: Climb to 2000 direct IGUPE and on track 263° to RAFFS and hold.

D-ATIS ARR 133.8 DEP 135.65	SOCAL APP CON 124.3 363.2 [APCH FM WEST] [225°-044°]	124.9 269.0 [090°-224°] 128.5 360.7 [045°-089°]	LOS ANGELES TOWER N 133.9 239.3 S 120.95 379.1	GND CON N 121.65 327.0 S 121.75 327.0 W 121.4 327.0	CLNC DEL 120.35 327.0	CPDLC
---	--	--	--	---	---	-------



ELEV 128 **D** TDZE 122

251° to RW24R

TDZ/CL Rwyrs 6W, 7L, 24R, and 25L
HIRL all Rwy

2000 IGUPE tr 263° RAFFS

VGSI and RNAV glidepath not coincident (VGSI Angle 3.00/TCH 73).

*LNAV only	ARBIE 1.7 NM to RW24R	JETSA 2200	MERCE 4000	BROUK 5000	LIVVN 6000	PALAC 7000
	720*	2200				GP 3.00° TCH 55
	1.7 NM	4.7 NM	7.9 NM	3.2 NM	3.2 NM	3.9 NM
CATEGORY	A	B	C	D		
LPV DA	322/18		200 (200-½)			
LNAV/VNAV DA	589/60		467 (500-1¼)			
LNAV MDA	640/24 518 (600-½)		640/55 518 (600-1)			

SW-3, 10 SEP 2020 to 08 OCT 2020

SW-3, 10 SEP 2020 to 08 OCT 2020