

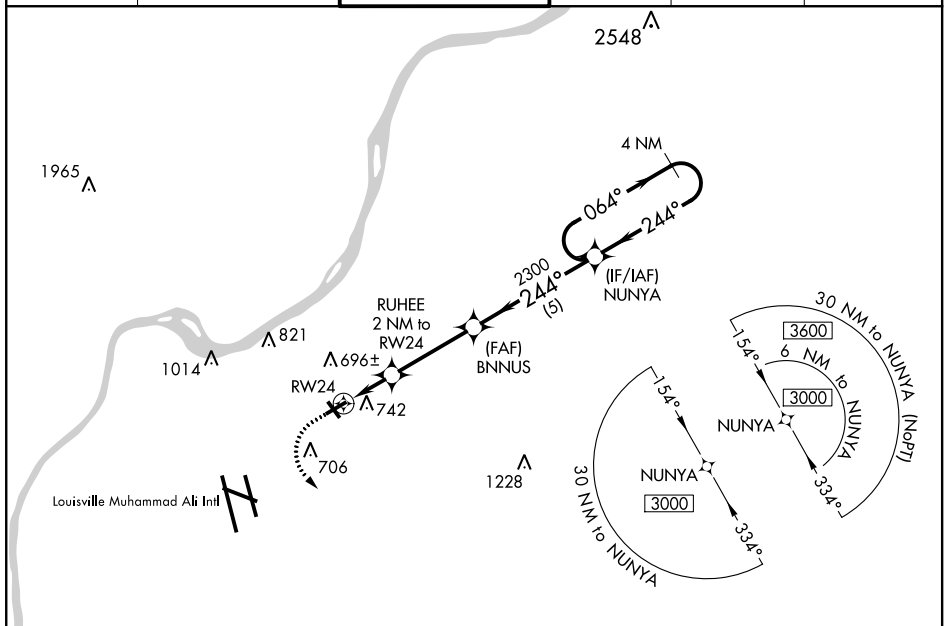
WAAS CH 58126 W24A	APP CRS 244°	Rwy Idg TDZE Apt Elev	3856 545 546
--	------------------------	-----------------------------	---

RNAV (GPS) RWY 24

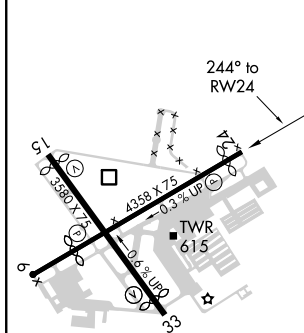
BOWMAN FIELD (LOU)

RNP APCH.	MISSED APPROACH: Climb to 1100 then climbing left turn to 3000 direct CAANT and hold.
<p>▽ VDP NA with Louisville Muhammad Ali Intl altimeter setting. When local altimeter setting not received, use Louisville Muhammad Ali Intl altimeter setting. Rwy 24 helicopter visibility reduction below 3/4 SM NA. Circling Rwy 6, 15, 33 NA at night.</p> <p>▲</p>	

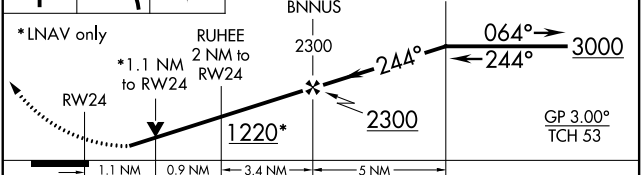
ATIS 124.15	LOUISVILLE APP CON 132.075 327.0	BOWMAN TOWER* 119.5 (CTAF) 257.625	GND CON 121.8	CLNC DEL 118.9	UNICOM 122.95
-----------------------	--	--	-------------------------	--------------------------	-------------------------



ELEV 546	D	TDZE 545
----------	----------	----------



1100	3000	CAANT	VGSI and RNAV glidepath not coincident (VGSI Angle 3.50/TCH 27).
------	------	-------	--



CATEGORY	A	B	C	D
LPV DA	830-7/8	285 (300-7/8)		NA
LNNAV/ VNAV	1025-1 1/8	480 (500-1 1/8)		NA
LNNAV MDA	1000-1	455 (500-1)		NA
C CIRCLING	1060-1 514 (600-1)	1080-1 534 (600-1)		NA

SE-1, 10 SEP 2020 to 08 OCT 2020

SE-1, 10 SEP 2020 to 08 OCT 2020