

LOC/DME I-MRY	APP CRS	Rwy ldg	<b>7000</b>
<b>110.7</b>	<b>098°</b>	TDZE	<b>198</b>
Chan <b>44</b>		Apt Elev	<b>257</b>

# ILS or LOC RWY 10R

MONTEREY RGNL (MRY)

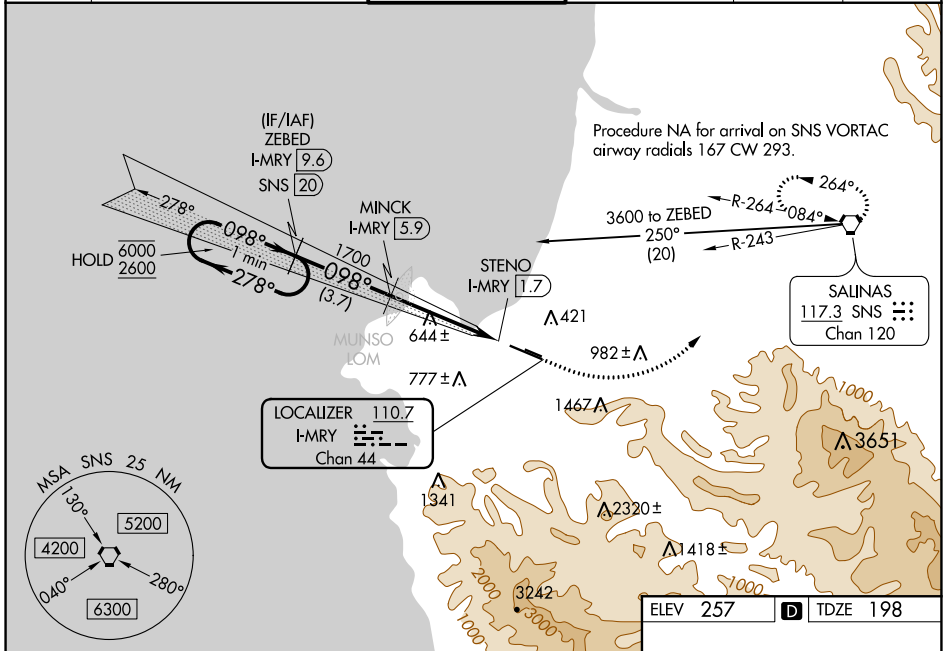
DME required.

**⚠** Circling NA south of Rwy 10R-28L.  
For inop ALS, increase S-ILS 10R all Cats visibility to RVR 6000, and increase S-LOC 10R Cat C and D visibility to 2 SM.

**MALS** 45

**MISSED APPROACH:** Climb to 600 then climbing left turn to 5000 on heading 030° and on SNS VORTAC R-243 to SNS VORTAC and hold, continue climb-in-hold to 5000. # Missed approach requires minimum climb of 265 feet per NM to 1360.

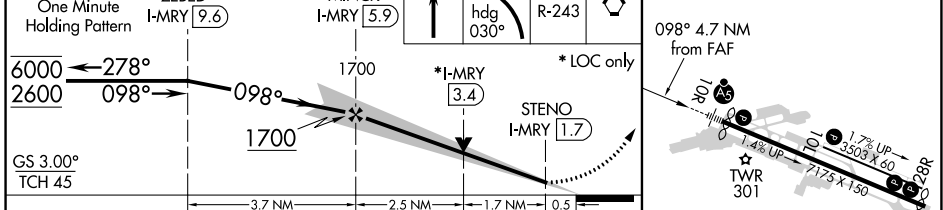
ATIS <b>119.25</b>	NORCAL APP CON <b>133.0 251.15</b> (360°-150°) <b>127.15 307.125</b> (151°-359°)	<b>MONTEREY TOWER *</b> <b>118.4 (CTAF) 257.8</b>	GND CON <b>120.875 348.6</b>	CLNC DEL <b>135.45</b>	UNICOM <b>122.95</b>
-----------------------	--	--	---------------------------------	---------------------------	-------------------------



SW-2, 10 SEP 2020 to 08 OCT 2020

SW-2, 10 SEP 2020 to 08 OCT 2020

ILS unusable from 1.7 DME inbound.	One Minute Holding Pattern	ZEBED I-MRY [9.6]	MINCK I-MRY [5.9]	600	5000	SNS	SNS
				hdg 030°		R-243	



CATEGORY	A	B	C	D
S-ILS 10R#		398/24	200 (200-½)	
S-ILS 10R		583/35	385 (400-⅝)	
S-LOC 10R	920/24	722 (700-½)	920-1⅝	722 (700-1⅝)
<b>C</b> CIRCLING	920-1	663 (700-1)	1280-3	NA
			1023 (1100-3)	

MIRL Rwy 10L-28R  
HIRL Rwy 10R-28L  
REIL Rwy 28L  
REIL Rwy 10L and 28R