

LOC/DME I-MTB	APP CRS	Rwy ldg TDZE	7000
<b>110.7</b>	<b>278°</b>	257	
Chan 44		Apt Elev	257

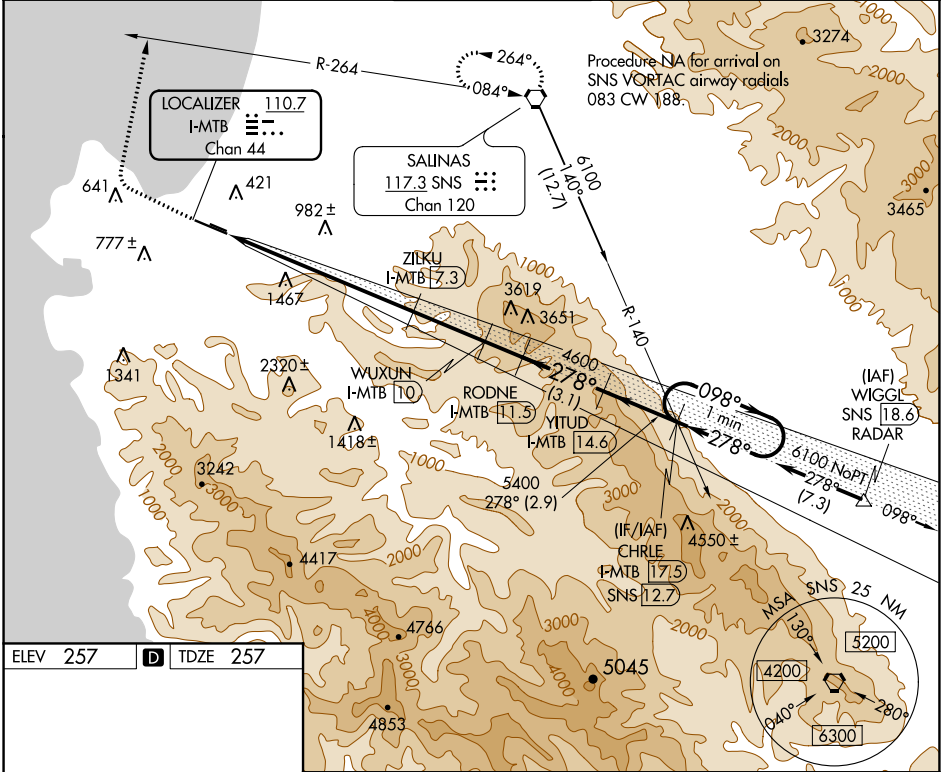
# LOC RWY 28L

MONTEREY RGNL (MRY)

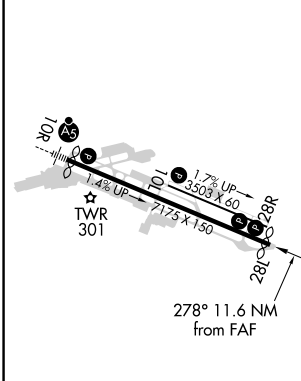
DME required. DME or RADAR required for procedure entry.  
 Circling NA south of Rwy 10R-28L. Rwy 28L helicopter visibility reduction below 3/4 SM NA.

MISSED APPROACH: Climb to 3000 then climbing right turn to 5000 on heading 360° and SNS VORTAC R-264 to SNS VORTAC and hold.

ATIS	NORCAL APP CON	MONTEREY TOWER*	GND CON	CLNC DEL	UNICOM
<b>119.25</b>	<b>133.0 251.15</b> (360°-150°) <b>127.15 307.125</b> (151°-359°)	<b>118.4 (CTAF) 0 257.8</b>	<b>120.875 348.6</b>	<b>135.45</b>	<b>122.95</b>



ELEV 257	D	TDZE 257
----------	---	----------



3000	5000	SNS	CHRLE
↑	hdg 360°	R-264	YITUD I-MTB 17.5
			One Minute Holding Pattern
I-MTB DME	WUXUN I-MTB 10	YITUD I-MTB 14.6	CHRLE
I-MTB 0.1	ZILKU I-MTB 7.3	RODNE I-MTB 11.5	5400
I-MTB 4.1	≤ 3.50° TCH 47	4600	← 278° → 6100
		3020	
		4.2 NM	3.2 NM
		2.7 NM	1.5 NM
			3.1 NM
			2.9 NM

- MIRL Rwy 10L-28R
- HIRL Rwy 10R-28L
- REIL Rwy 28L
- REIL Rwy 10L and 28R

CATEGORY	A	B	C	D
S-LOC 28L	1860-1 1/4 1603 (1700-1 1/4)	1860-1 1/2 1603 (1700-1 1/2)	1860-3	1603 (1700-3)
CIRCLING	1860-1 1/4 1603 (1700-1 1/4)	1860-1 1/2 1603 (1700-1 1/2)	1860-3	1603 (1700-3)

SW-2, 10 SEP 2020 to 08 OCT 2020

SW-2, 10 SEP 2020 to 08 OCT 2020