

**TOP ALTITUDE:  
7000**

ATIS  
 119.25  
 CLNC DEL  
 135.45  
 GND CON  
 120.875 348.6  
 MONTEREY TOWER ★  
 118.4 257.8  
 NORCAL DEP CON  
 133.0 251.15 (360°-150°)  
 127.15 307.125 (151°-359°)

**WOODSIDE**  
 113.9 OSI   
 Chan 86  
 N37°23.55'-W122°16.88'  
 L-2-3, H-3

**SAN JOSE**  
 114.1 SJC   
 Chan 88  
 N37°22.48'-W121°56.68'  
 L-2-3

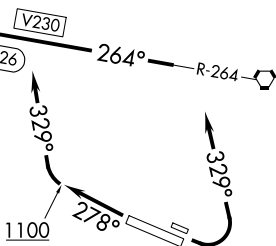
**SALINAS**  
 117.3 SNS   
 Chan 120  
 N36°39.83'-W121°36.19'  
 L-3, H-3

**SHOEY**  
 36°44.76'  
 122°08.16'  
 L-3

**PANOCHÉ**  
 112.6 PXN   
 Chan 73  
 N36°42.93'-W120°46.72'  
 L-3, H-3

**PASO ROBLES**  
 114.3 PRB   
 Chan 90  
 N35°40.35'-W120°37.63'  
 L-3-7

**AVENAL**  
 117.1 AVE   
 Chan 118  
 N35°38.82'-W119°58.72'  
 L-3-7, H-4



### TAKEOFF MINIMUMS

- Rwy 10L: Standard with minimum climb of 360' per NM to 1300.
- Rwy 10R: Standard with minimum climb of 390' per NM to 1200.
- Rwy 28L: Standard with minimum climb of 310' per NM to 1100.
- Rwy 28R: Standard.

NOTE: Chart not to scale.

### DEPARTURE ROUTE DESCRIPTION

TAKEOFF RUNWAYS 10L/R: Climbing left turn heading 329°. Thence. . .

TAKEOFF RUNWAYS 28L/R: Climb heading 278° until leaving 1100 or as directed by Monterey Tower. Then climbing right turn heading 329°. Thence. . .

. . . intercept SNS R-264 westbound to SHOHEY intersection. Maintain 7000 or assigned altitude. Expect clearance to filed altitude five minutes after departure.