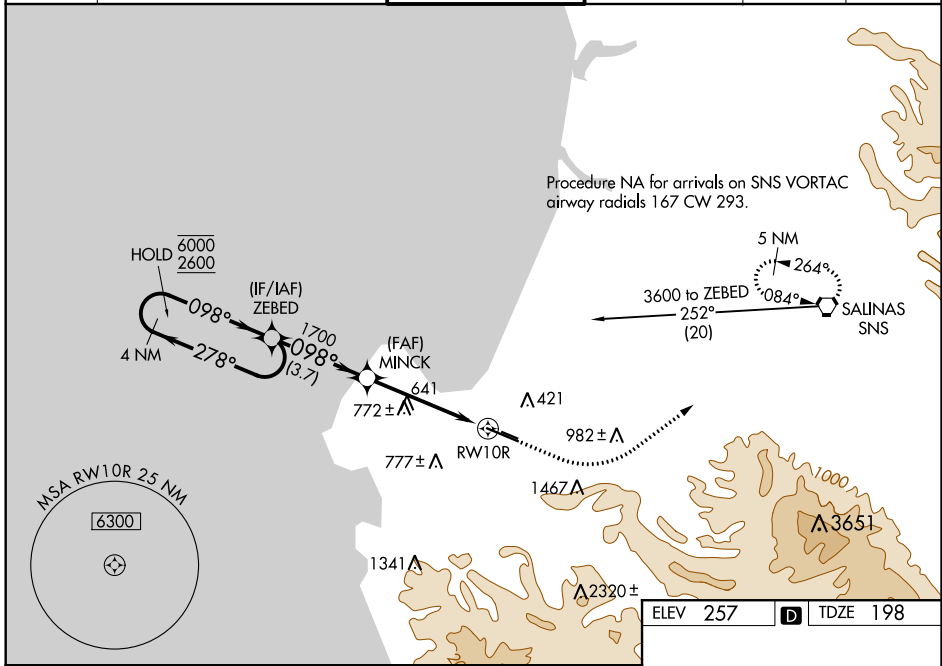


WAAS CH 69602 W10A	APP CRS 098°	Rwy Idg TDZE Apt Elev	7000 198 257
--	------------------------	-----------------------------	---

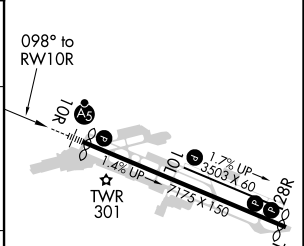
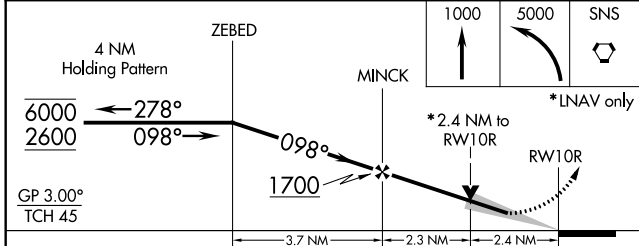
RNAV (GPS) RWY 10R

MONTEREY RGNL (MRY)

RNP APCH.		MALSRS	MISSED APPROACH: Climb to 1000 then climbing left turn to 5000 direct SNS VORTAC and hold, continue climb-in-hold to 5000.		
<p>⚠ Circling NA south of Rwy 10R and 28L. For uncompensated Baro-VNAV systems, LNAV/VNAV NA below 0°C or above 54°C. For inop ALS, increase LPV visibility all Cats to 1½ SM, LNAV/VNAV visibility all Cats and LNAV Cat C/D to 2½ SM.</p>			GND CON	CLNC DEL	UNICOM
ATIS 119.25	NORCAL APP CON 133.0 251.15 (360°-150°) 127.15 307.125 (151°-359°)	MONTEREY TOWER ★ 118.4 (CTAF) 257.8	120.875 348.6	135.45	122.95



ELEV 257	D	TDZE 198
----------	----------	----------



CATEGORY	A	B	C	D
LPV DA	718-1½		520 (500-1½)	
LNAV/VNAV DA	789-1¾		591 (600-1¾)	
LNAV MDA	980/24 782 (800-½)	980/40 782 (800-¾)	980-1¾	782 (800-1¾)
C CIRCLING	980-1 723 (800-1)	980-1¼ 723 (800-1¼)	1280-3 1023 (1100-3)	NA

MIRL Rwy 10L-28R
 HIRL Rwy 10R-28L **Ⓛ**
 REIL Rwy 28L **Ⓛ**
 REIL Rwy 10L and 28R

SW-2, 10 SEP 2020 to 08 OCT 2020

SW-2, 10 SEP 2020 to 08 OCT 2020