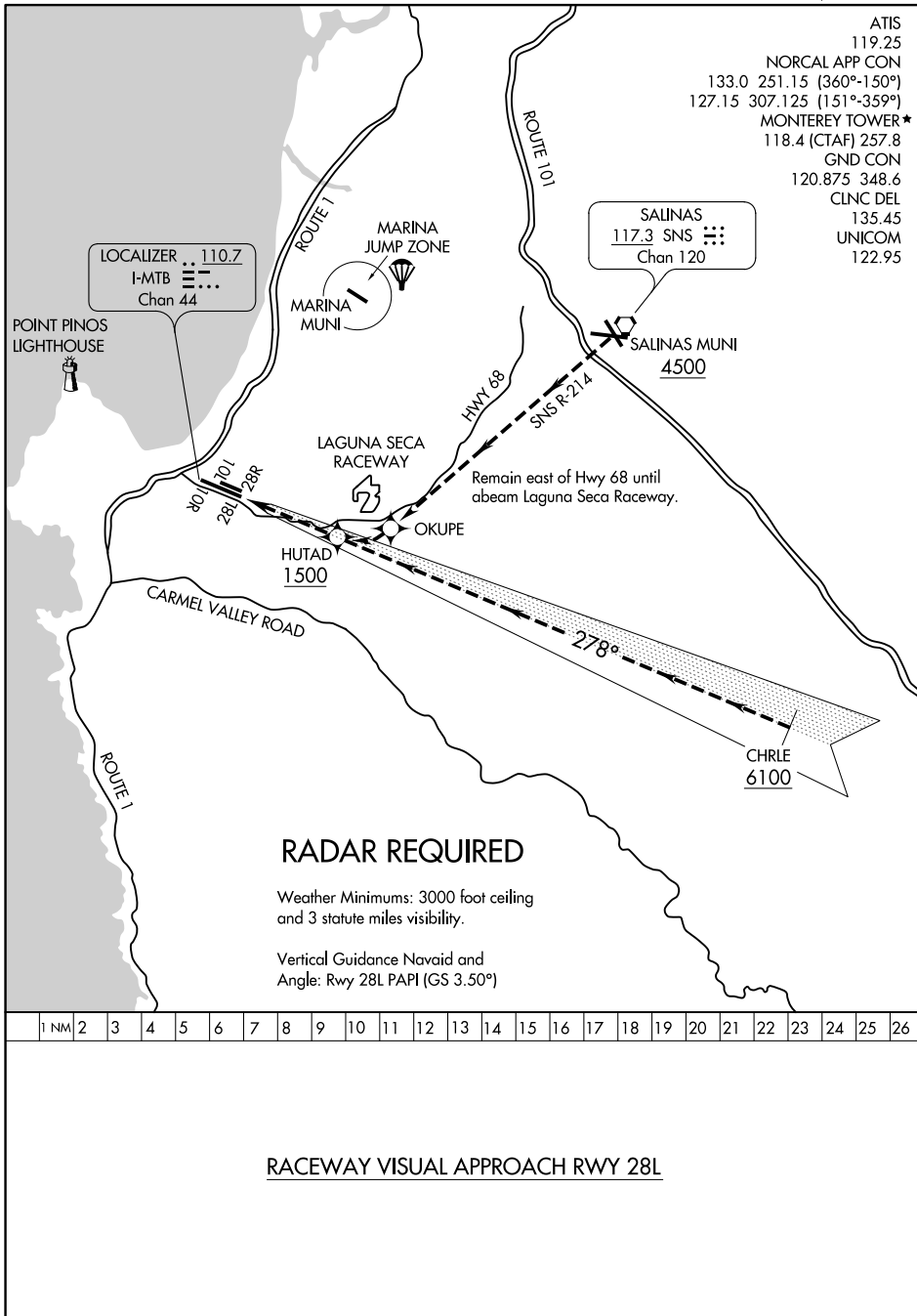


# RACEWAY VISUAL RWY 28L

AL-271 (FAA)

MONTEREY RGNL (MRY)  
MONTEREY, CALIFORNIA



ATIS 119.25  
 NORCAL APP CON 133.0 251.15 (360°-150°)  
 127.15 307.125 (151°-359°)  
 MONTEREY TOWER\* 118.4 (CTAF) 257.8  
 GND CON 120.875 348.6  
 CLNC DEL 135.45  
 UNICOM 122.95

LOCALIZER .. 110.7  
 I-MTB  
 Chan 44

SALINAS  
 117.3 SNS  
 Chan 120

## RADAR REQUIRED

Weather Minimums: 3000 foot ceiling and 3 statute miles visibility.

Vertical Guidance Navaid and Angle: Rwy 28L PAPI (GS 3.50°)

|      |   |   |   |   |   |   |   |   |    |    |    |    |    |    |    |    |    |    |    |    |    |    |    |    |    |
|------|---|---|---|---|---|---|---|---|----|----|----|----|----|----|----|----|----|----|----|----|----|----|----|----|----|
| 1 NM | 2 | 3 | 4 | 5 | 6 | 7 | 8 | 9 | 10 | 11 | 12 | 13 | 14 | 15 | 16 | 17 | 18 | 19 | 20 | 21 | 22 | 23 | 24 | 25 | 26 |
|------|---|---|---|---|---|---|---|---|----|----|----|----|----|----|----|----|----|----|----|----|----|----|----|----|----|

## RACEWAY VISUAL APPROACH RWY 28L

# RACEWAY VISUAL RWY 28L

SW-2, 10 SEP 2020 to 08 OCT 2020

SW-2, 10 SEP 2020 to 08 OCT 2020