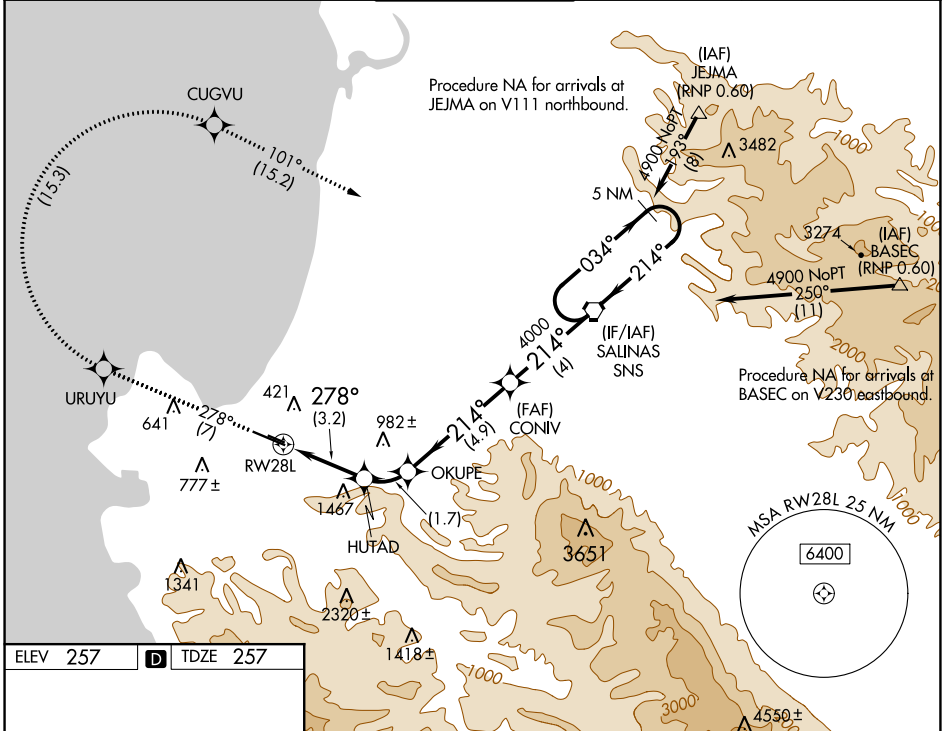


APP CRS	Rwy Idg	7000
278°	TDZE	257
	Apt Elev	257

RNAV (RNP) Z RWY 28L

MONTEREY RGNL (MR.Y)

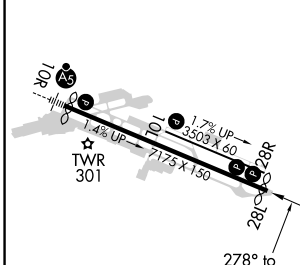
<p>▽ ▲</p> <p>For uncompensated Baro-VNAV systems, procedure NA below 0°C (32°F) or above 48°C (120°F). RF required. GPS required.</p>		<p>MISSED APPROACH: Climb to 5500 on track 278° to URUYU, right turn to CUGVU, and on track 101° to SNS VORTAC and hold.</p>			
ATIS	NORCAL APP CON	MONTEREY TOWER*	GND CON	CLNC DEL	UNICOM
119.25	133.0 251.15 (360°-150°) 127.15 307.125 (151°-359°)	118.4 (CTAF) 0257.8	120.875 348.6	135.45	122.95



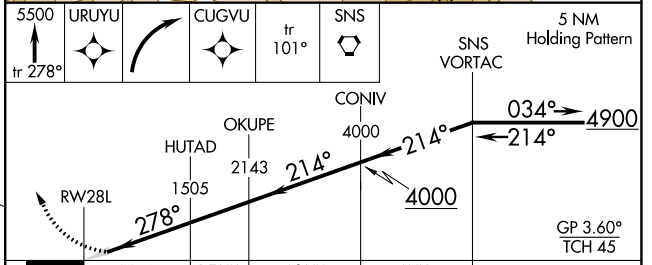
SW-2, 10 SEP 2020 to 08 OCT 2020

SW-2, 10 SEP 2020 to 08 OCT 2020

ELEV 257	D	TDZE 257
----------	----------	----------



MIRL Rwy 10L-28R
HIRL Rwy 10R-28L 1
REIL Rwy 28L 1
REIL Rwy 10L and 28R



CATEGORY	A	B	C	D
RNP 0.10 DA	527/45	270 (300-¾)		NA
RNP 0.15 DA	767- 1½	510 (600-1½)		NA
RNP 0.20 DA	1236-3	979 (1000-3)		NA

AUTHORIZATION REQUIRED