

LOC/DME I-APC 111.3 Chan 50	APP CRS 006°	Rwy Idg TDZE Apt Elev	5930 17 36
--	------------------------	-----------------------------	---------------------------------------

ILS or LOC Z RWY 1L

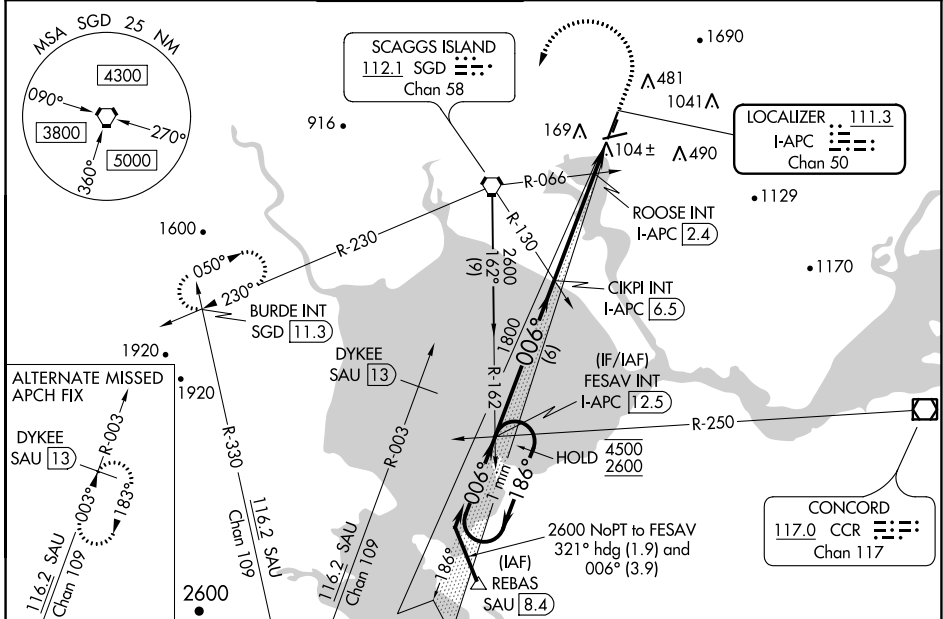
NAPA COUNTY (APC)

⚠ Autopilot coupled approach NA below 530. Inop table does not apply to S-ILS 1L. Circling Cats A/B/C NA northeast of Rwy 19R and 24. Circling Cat D NA east of Rwy 19L-1R. Circling Rwy 6 NA at night.

MALS

MISSED APPROACH: Climb to 500 then climbing left turn to 3200 direct SGD VORTAC and on SGD VORTAC R-230 to BURDE INT/SGD 11.3 DME and hold, continue climb-in-hold to 3200.

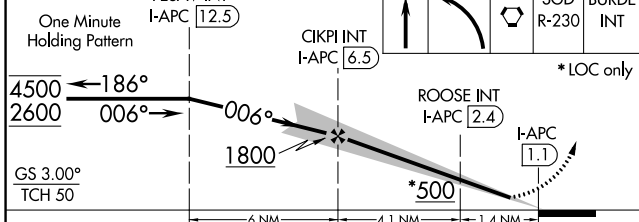
ATIS 124.05	OAKLAND CENTER 127.8 353.5	NAPA TOWER * 118.7 (CTAF) 257.8	GND CON 121.7	CLNC DEL 127.85	UNICOM 122.95
-----------------------	--------------------------------------	---	-------------------------	---------------------------	-------------------------



SW-2, 10 SEP 2020 to 08 OCT 2020

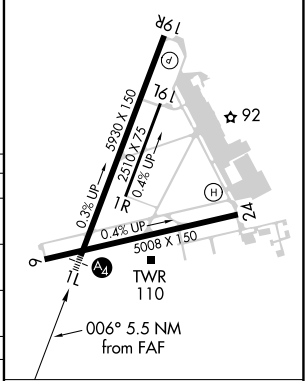
SW-2, 10 SEP 2020 to 08 OCT 2020

FESAV INT I-APC [12.5]	500	3200	SGD	SGD	BURDE INT	ELEV 36	TDZE 17
------------------------	-----	------	-----	-----	-----------	---------	---------



MIRL Rwy 6-24 and 1L-19R
REIL Rwy 6

CATEGORY	A	B	C	D
S-ILS 1L	217-3/4		200 (200-3/4)	
S-LOC 1L	500-3/4 483 (500-3/4)		500-1 1/8 483 (500-1 1/8)	
C CIRCLING	600-1 564 (600-1)	680-1 644 (700-1)	1280-3 1244 (1300-3)	1300-3 1264 (1300-3)
ROOSE FIX MINIMUMS (DUAL VOR RECEIVERS OR DME REQUIRED)				
S-LOC 1L	360-3/4		343 (400-3/4)	
C CIRCLING	600-1 564 (600-1)	680-1 644 (700-1)	1280-3 1244 (1300-3)	1300-3 1264 (1300-3)



FAF to MAP 5.5 NM					
Knots	60	90	120	150	180
Min:Sec	5:30	3:40	2:45	2:12	1:50