

APP CRS	Rwy Idg	5008
062°	TDZE	21
	Apt Elev	36

RNAV (GPS) RWY 6

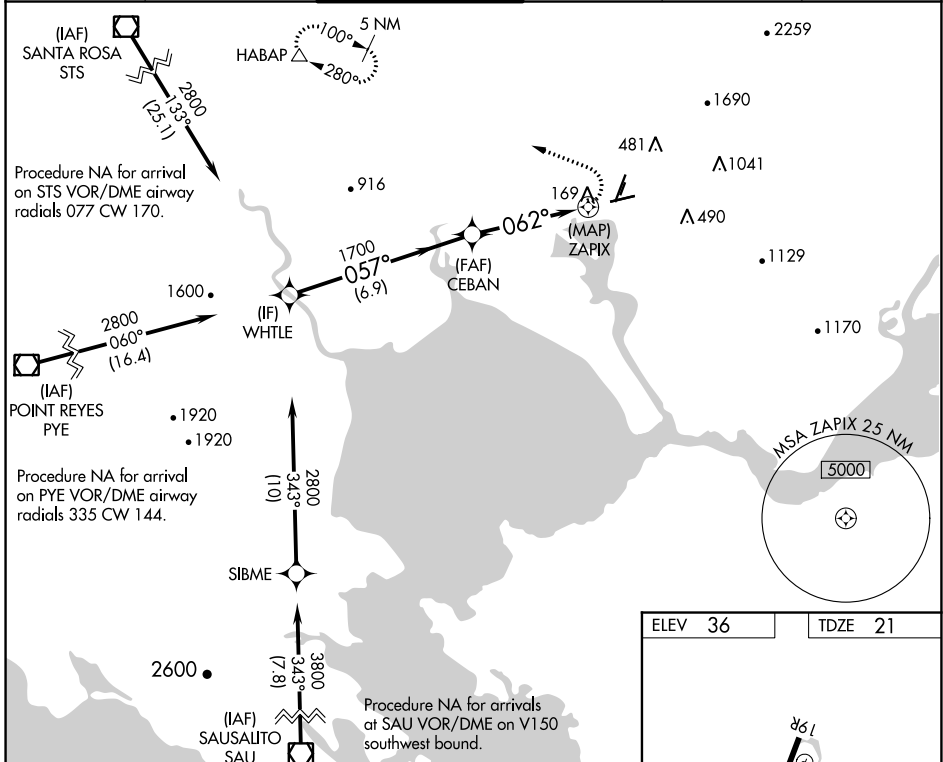
NAPA COUNTY (APC)

RNP APCH.

▼ Rwy 6 helicopter visibility reduction below 1 SM NA.
▲ Circling Cats A/B/C NA northeast of Rwys 19R and 24.
 Circling Cat D NA east of Rwy 19L-1R.
 Straight-in Rwy 6 NA at night, Circling Rwy 6 NA at night.

MISSED APPROACH: Climbing left turn to 4100 direct HABAP and hold, continue climb-in-hold to 4100.
 *Missed approach requires minimum climb of 355 feet per NM to 2300.

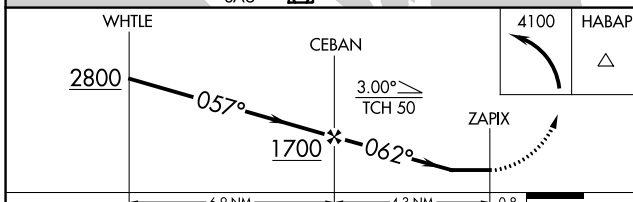
ATIS 124.05	OAKLAND CENTER 127.8 353.5	NAPA TOWER* 118.7 (CTAF) 257.8	GND CON 121.7	CLNC DEL 127.85	UNICOM 122.95
-----------------------	--------------------------------------	--	-------------------------	---------------------------	-------------------------



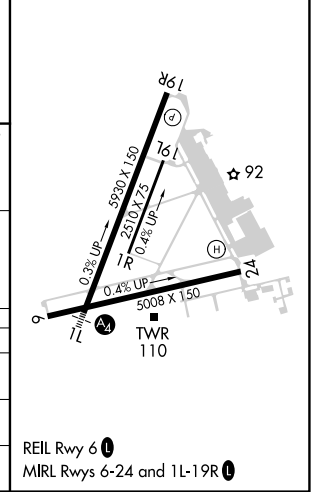
SW-2, 10 SEP 2020 to 08 OCT 2020

SW-2, 10 SEP 2020 to 08 OCT 2020

ELEV 36	TDZE 21
---------	---------



CATEGORY	A	B	C	D
LNAV MDA*	480-1	459 (500-1)	480-1 $\frac{3}{8}$	459 (500-1 $\frac{3}{8}$)
LNAV MDA	940-1 $\frac{1}{4}$	919 (1000-1 $\frac{1}{4}$)	940-2 $\frac{1}{2}$	919 (1000-2 $\frac{1}{2}$)
C CIRCLING	940-1 $\frac{1}{4}$	904 (1000-1 $\frac{1}{4}$)	1280-3 1244 (1300-3)	1300-3 1264 (1300-3)



REIL Rwy 6 **0**
 MIRL Rws 6-24 and 1L-19R **0**