

VORTAC SGD <b>112.1</b> Chan 58	APP CRS <b>050°</b>	Rwy Idg TDZE Apt Elev	<b>5008</b> <b>21</b> <b>36</b>
---------------------------------------	------------------------	-----------------------------	---------------------------------------

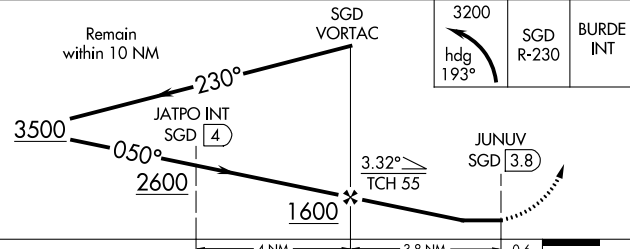
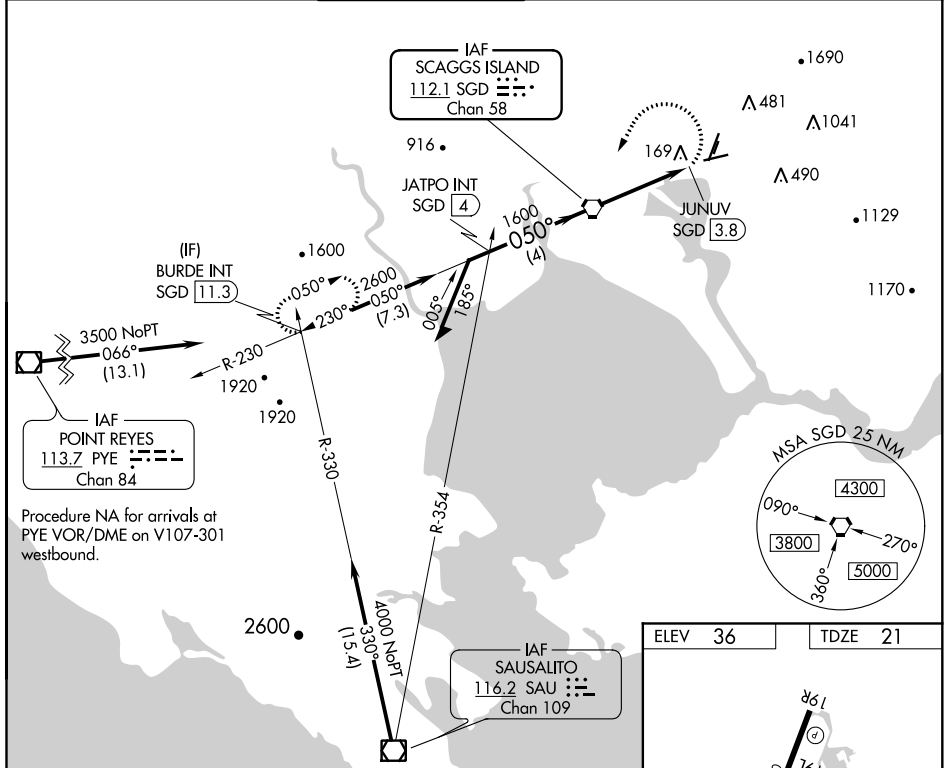
# VOR RWY 6

NAPA COUNTY (APC)

**▼** Rwy 6 helicopter visibility reduction below 1 SM NA. Straight-in Rwy 6 NA at night. Circling Rwy 6 NA at night. Circling Cats A/B/C NA northeast of Rwys 19R and 24. Circling Cat D NA east of Rwy 19L-1R.

**MISSED APPROACH:** Climbing left turn to 3200 on heading 193° and SGD VORTAC R-230 to BURDE INT/SGD 11.3 DME and hold, continue climb-in-hold to 3200.

ATIS <b>124.05</b>	OAKLAND CENTER <b>127.8 353.5</b>	NAPA TOWER * <b>118.7 (CTAF) 0 257.8</b>	GND CON <b>121.7</b>	CLNC DEL <b>127.85</b>	UNICOM <b>122.95</b>
-----------------------	--------------------------------------	---	-------------------------	---------------------------	-------------------------



CATEGORY	A	B	C	D
S-6	460-1	439 (500-1)	460-1¼	439 (500-1¼)
<b>☒</b> CIRCLING	600-1 564 (600-1)	680-1 644 (700-1)	1280-3 1244 (1300-3)	1300-3 1264 (1300-3)

Knots	60	90	120	150	180
Min:Sec	3:48	2:32	1:54	1:31	1:16

SW-2, 10 SEP 2020 to 08 OCT 2020

SW-2, 10 SEP 2020 to 08 OCT 2020