

# ARLIN FOUR ARRIVAL

AL-322 (FAA)

PHOENIX, ARIZONA

SW-4, 10 SEP 2020 to 08 OCT 2020

## ARRIVAL ROUTE DESCRIPTION

**BLYTHE TRANSITION (BLH\_ARLIN4):** From over BLH VORTAC on BLH R-089 and IWA R-256 to ARLIN INT. Thence, . . .

**MOHAK TRANSITION (MOHAK\_ARLIN4):** From over MOHAK INT on GBN R-247 and BXK R-215 to HYDRR INT, then on IWA R-256 to ARLIN INT. Thence, . . .

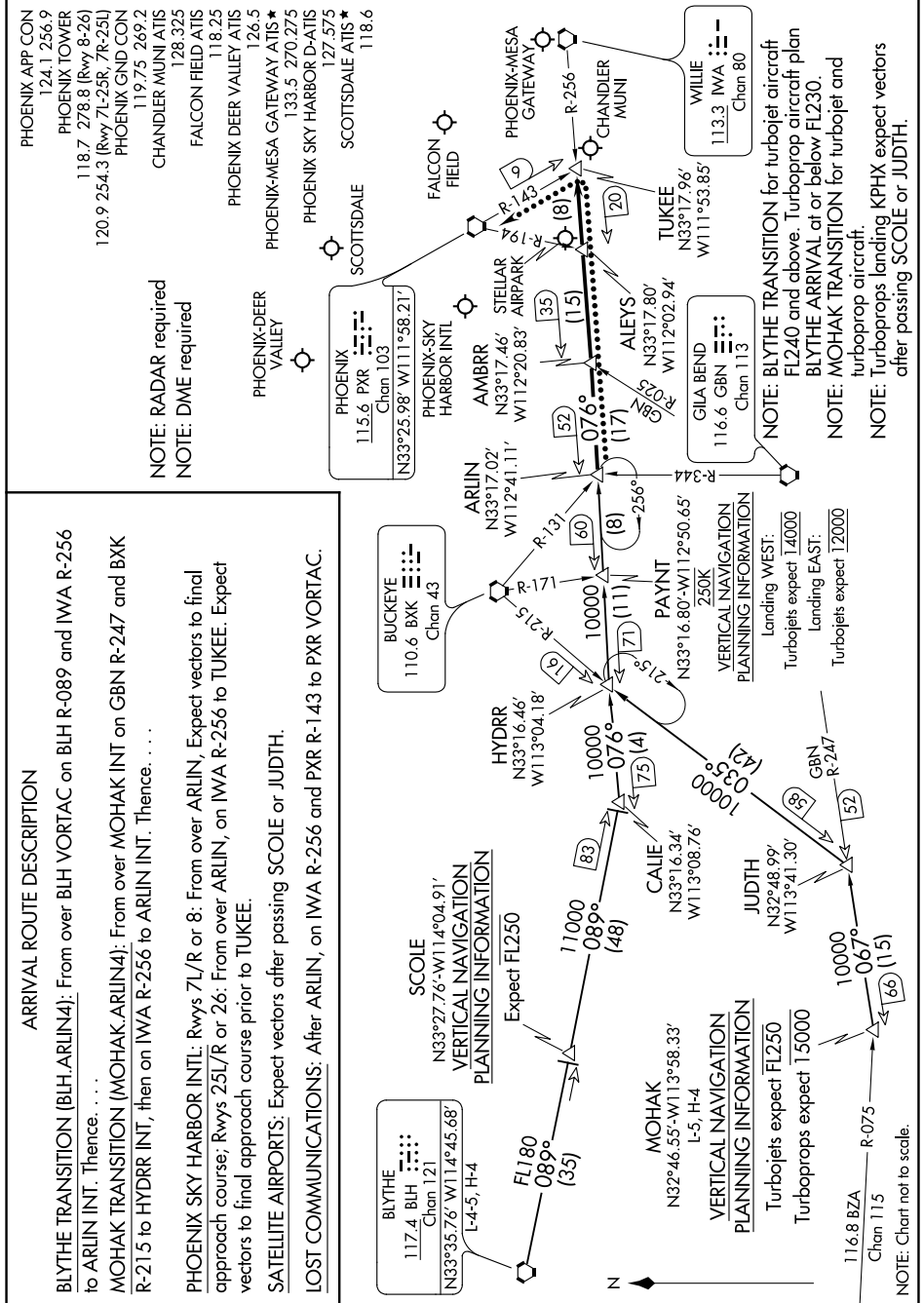
**PHOENIX SKY HARBOR INTL:** Rwy 7L/R or 8: From over ARLIN, Expect vectors to final approach course; Rwy 25L/R or 26: From over ARLIN, on IWA R-256 to TUKEE. Expect vectors to final approach course prior to TUKEE.

**SATELLITE AIRPORTS:** Expect vectors after passing SCOPE or JUDTH.

**LOST COMMUNICATIONS:** After ARLIN, on IWA R-256 and PXR R-143 to PXR VORTAC.

NOTE: RADAR required  
NOTE: DME required

- PHOENIX APP CON 124.1 256.9
- PHOENIX TOWER 118.7 278.8 (Rwy 8-26)
- 120.9 254.3 (Rwy 7L-23R, 7R-25L)
- PHOENIX GND CON 119.75 269.2
- CHANDLER MUNI ATIS 128.325
- FALCON FIELD ATIS 118.25
- PHOENIX DEER VALLEY ATIS 126.5
- PHOENIX-MESA GATEWAY ATIS 133.5 270.275
- PHOENIX SKY HARBOR D-ATIS 127.575
- SCOTTSDALE ATIS 118.6



NOTE: BLYTHE TRANSITION for turbojet aircraft FL240 and above. Turboprop aircraft plan BLYTHE ARRIVAL at or below FL230.

NOTE: MOHAK TRANSITION for turbojet and turboprop aircraft.

NOTE: Turboprops landing KPHX expect vectors after passing SCOPE or JUDTH.

**VERTICAL NAVIGATION PLANNING INFORMATION**

Landing WEST:  
Turbojets expect 14000  
Landing EAST:  
Turbojets expect 12000

**VERTICAL NAVIGATION PLANNING INFORMATION**

Turbojets expect FL250  
Turboprops expect 15000

# ARLIN FOUR ARRIVAL

PHOENIX, ARIZONA

SW-4, 10 SEP 2020 to 08 OCT 2020