

BALDY THREE DEPARTURE

AL-322 (FAA)

PHOENIX SKY HARBOR INTL (PHX)
PHOENIX, ARIZONA

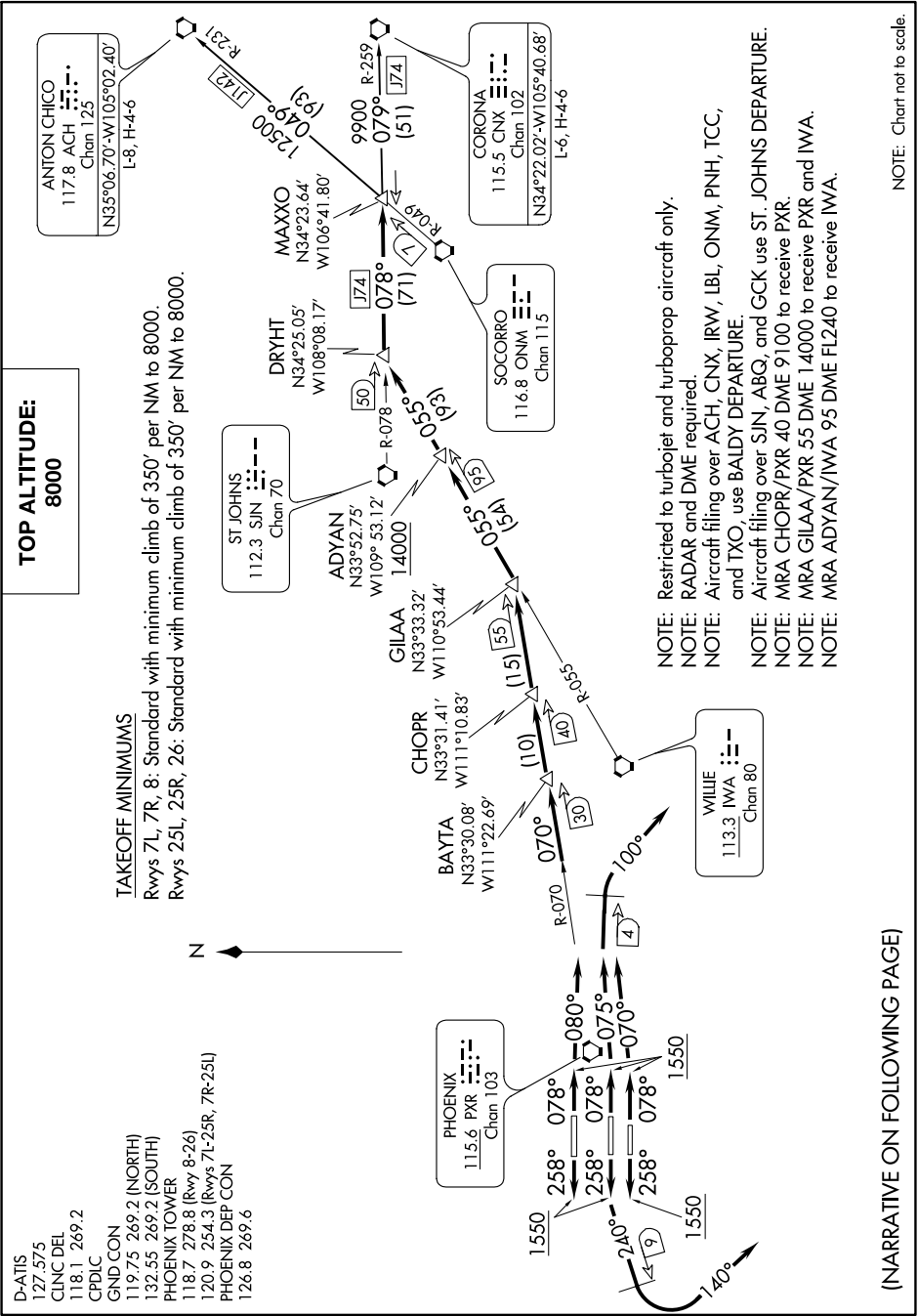
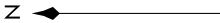
SW-4, 10 SEP 2020 to 08 OCT 2020

**TOP ALTITUDE:
8000**

TAKEOFF MINIMUMS

Rwys 7L, 7R, 8: Standard with minimum climb of 350' per NM to 8000.
Rwys 25L, 25R, 26: Standard with minimum climb of 350' per NM to 8000.

- D-ATIS 127.575
- CLNC DEL 118.1 269.2
- CPDLC
- GND CON 119.75 269.2 (NORTH)
- 132.55 269.2 (SOUTH)
- PHOENIX TOWER 118.7 278.8 (Rwy 8-26)
- 120.9 254.3 (Rwys 7L-25R, 7R-25L)
- PHOENIX DEP CON 126.8 269.6



(NARRATIVE ON FOLLOWING PAGE)

NOTE: Chart not to scale.

SW-4, 10 SEP 2020 to 08 OCT 2020