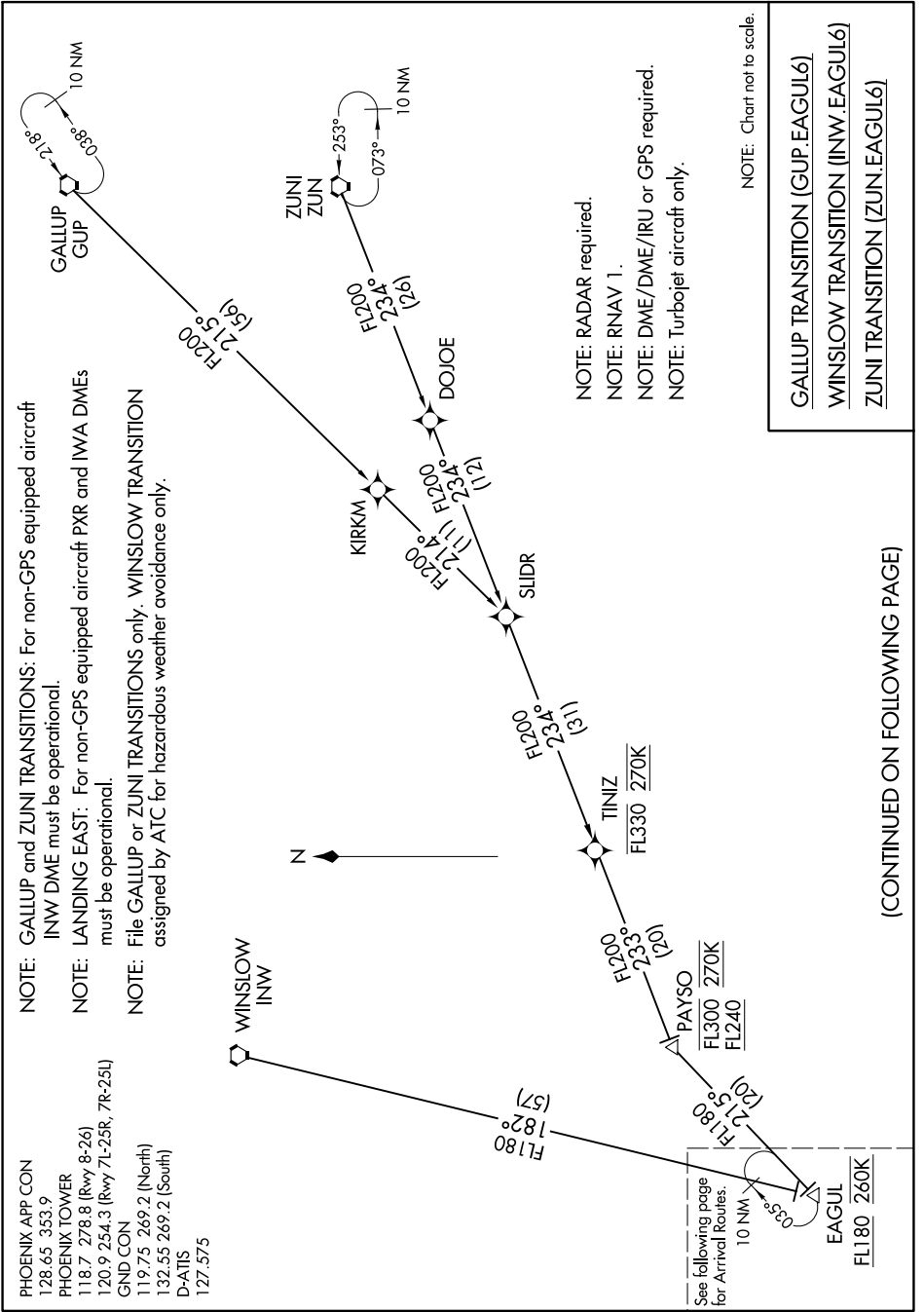


EAGUL SIX ARRIVAL (RNAV) Transition Routes

SW-4, 10 SEP 2020 to 08 OCT 2020



NOTE: GALLUP and ZUNI TRANSITIONS: For non-GPS equipped aircraft INW DME must be operational.

NOTE: LANDING EAST: For non-GPS equipped aircraft PXR and IWA DMEs must be operational.

NOTE: File GALLUP or ZUNI TRANSITIONS only. WINSLOW TRANSITION assigned by ATC for hazardous weather avoidance only.

PHOENIX APP CON 128.65 353.9  
 PHOENIX TOWER 118.7 278.8 (Rwy 8-26)  
 120.9 254.3 (Rwy 7L-25R, 7R-25L)  
 GND CON 119.75 269.2 (North)  
 132.55 269.2 (South)  
 D-ATIS 127.575

NOTE: RADAR required.  
 NOTE: RNAV 1.  
 NOTE: DME/DME/IRU or GPS required.  
 NOTE: Turbojet aircraft only.

NOTE: Chart not to scale.

GALLUP TRANSITION (GUP.EAGUL6)  
 WINSLOW TRANSITION (INW.EAGUL6)  
 ZUNI TRANSITION (ZUN.EAGUL6)

(CONTINUED ON FOLLOWING PAGE)

SW-4, 10 SEP 2020 to 08 OCT 2020

EAGUL SIX ARRIVAL (RNAV) Transition Routes