

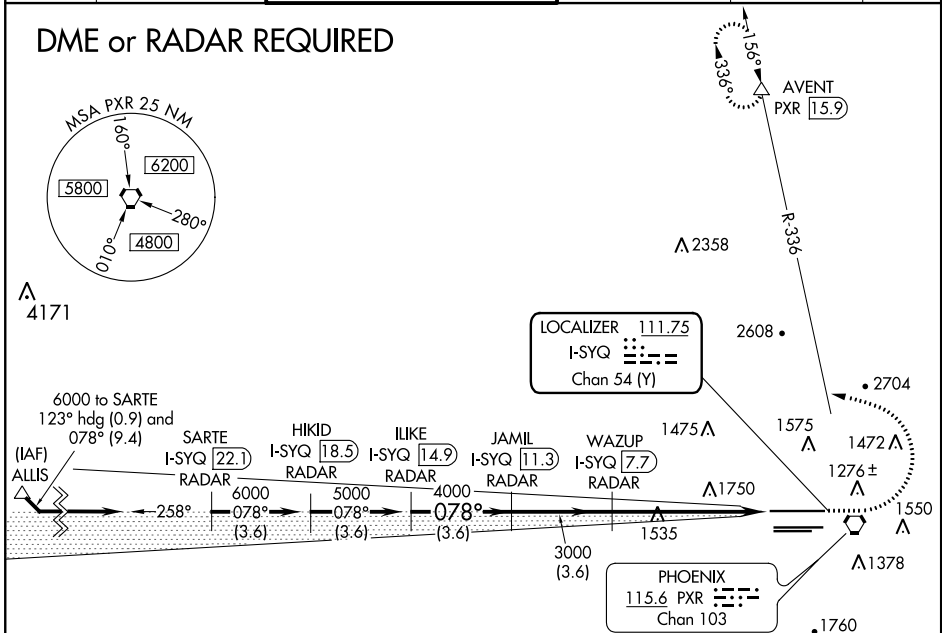
LOC/DME I-SYQ 111.75 Chan 54 (Y)	APP CRS 078°	Rwy Idg 10591 TDZE 1118 Apt Elev 1135
--	------------------------	--

ILS or LOC RWY 8
PHOENIX SKY HARBOR INTL (PHX)

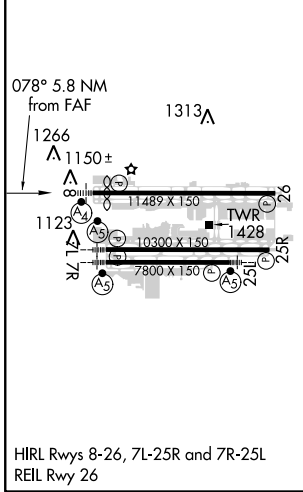
▽ Simultaneous approach authorized with Rwy 7R and RNAV (RNP) Z Rwy 7L, RNAV (GPS) Y Rwy 7L. DME required.	MALSF 	MISSED APPROACH: Climb to 3000, then climbing left turn to 5000 via heading 280° and PXR R-336 to AVENT/PXR 15.9 DME and hold.
---	------------------	---

D-ATIS 127.575	PHOENIX APP CON 128.65 353.9	PHOENIX TOWER 118.7 278.8 (Rwy 8-26) 120.9 254.3 (Rwy 7L-25R, 7R-25L)	GND CON 119.75 269.2 (N) 132.55 269.2 (S)	CLNC DEL 118.1 269.2	CPDLC
--------------------------	--	---	---	--------------------------------	-------

DME or RADAR REQUIRED



ELEV 1135	D	TDZE 1118
-----------	----------	-----------



PHOENIX, ARIZONA
Orig-E 23APR20

VGSi and ILS glidepath not coincident (VGSi Angle 3.00/TCH 69).			
ILIKE I-SYQ 14.9 RADAR	JAMIL I-SYQ 11.3 RADAR	WAZUP I-SYQ 7.7 RADAR	PXR R-336
5000		3000	AVENT △
078°		3000	Use I-SYQ DME when on LOC course.
4000		3000	I-SYQ 1.9
GS 3.00° TCH 55		3000	
Procedure Turn NA		3000	
3.6 NM		3.6 NM	5.7 NM
A	B	C	D
S-ILS 8	1368-1 250 (300-1)		
S-LOC 8	1860-1 742 (800-1)	1860-1¼ 742 (800-1¼)	1860-2¼ 742 (800-2¼)
C CIRCLING	1860-1	1860-1¼	1860-2½
	725 (800-1)	725 (800-1¼)	1425 (1500-3)

33°26'N-112°01'W

PHOENIX SKY HARBOR INTL (PHX)
ILS or LOC RWY 8

SW-4, 10 SEP 2020 to 08 OCT 2020

SW-4, 10 SEP 2020 to 08 OCT 2020