

LOC/DME I-PHX	APP CRS	Rwy Idg	<b>10300</b>
<b>111.5</b>	<b>078°</b>	TDZE	<b>1116</b>
Chan <b>52</b>		Apt Elev	<b>1135</b>

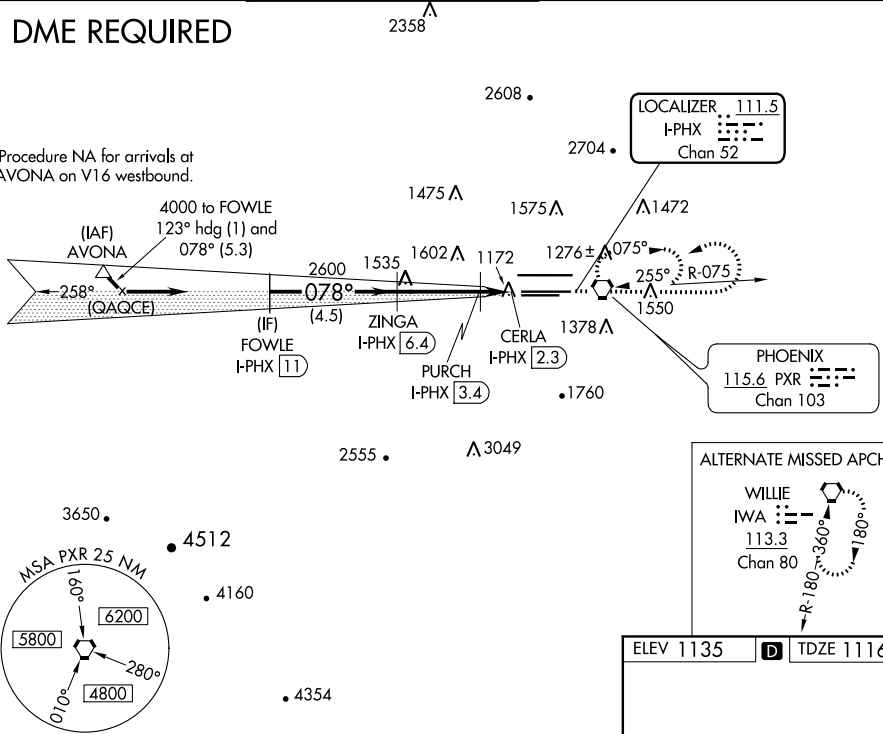
# ILS or LOC/DME RWY 7L

PHOENIX SKY HARBOR INTL (PHX)

<b>▽</b> For inoperative ALS, increase S-LOC 7L Cats C/D visibility to RVR 5500. <b>▲</b>	MALSR 	MISSED APPROACH: Climb to 5000 then left turn direct PXR VORTAC and hold.				
		D-ATIS	PHOENIX APP CON	PHOENIX TOWER	GND CON	CLNC DEL
<b>127.575</b>	<b>128.65 353.9</b>	<b>118.7 278.8</b> (Rwy 8-26) <b>120.9 254.3</b> (Rwy 7L-25R, 7R-25L)	<b>119.75 269.2</b> (N) <b>132.55 269.2</b> (S)	<b>118.1 269.2</b>		

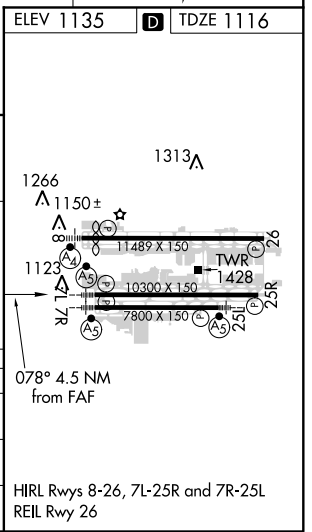
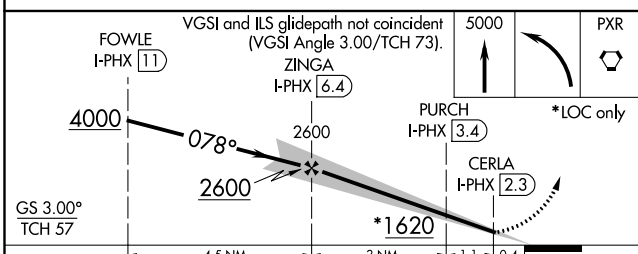
## DME REQUIRED

Procedure NA for arrivals at AVONNA on V16 westbound.



SW-4, 10 SEP 2020 to 08 OCT 2020

SW-4, 10 SEP 2020 to 08 OCT 2020



CATEGORY	A	B	C	D
S-ILS 7L	1326/24		210 (200-1/2)	
S-LOC 7L	1460/24	344 (400-1/2)	1460/30	344 (400-5/8)
<b>C</b> CIRCLING	1740-1	605 (700-1)	2040-2 3/4 905 (1000-2 3/4)	2560-3 1425 (1500-3)