

APP CRS 258°	Rwy Idg 7800
	TDZE 1126
	Apt Elev 1135

RNAV (RNP) Z RWY 25L

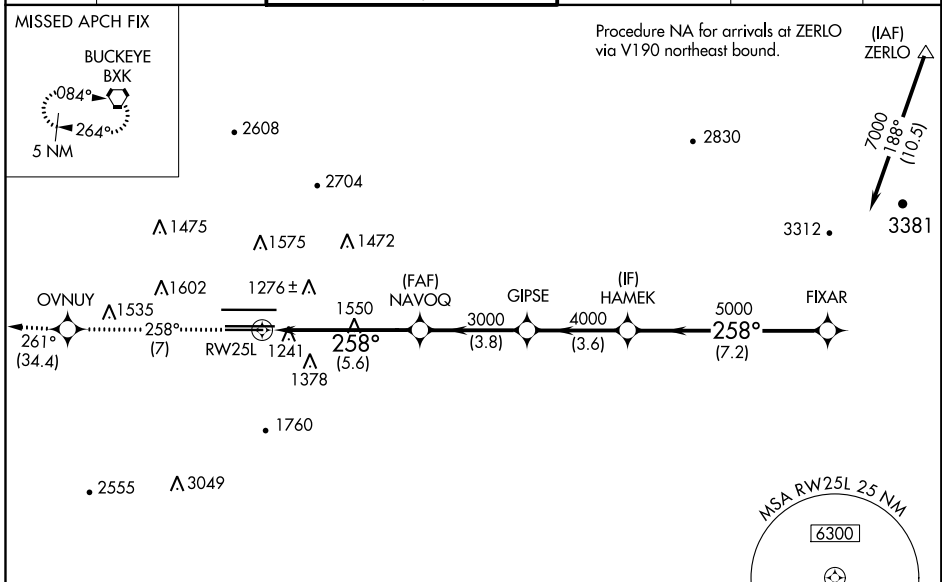
PHOENIX SKY HARBOR INTL (PHX)

▼ For inoperative MALSR, increase RNP 0.11 all Cats visibility to 1¾, RNP 0.30 all Cats visibility to 2. Visibility reduction by helicopters NA. GPS required. For uncompensated Baro-VNAV systems, procedure NA below 1°C (34°F) or above 46°C (116°F). Simultaneous approach authorized with ILS or LOC Rwy 26. Use of FD or AP providing RNAV track guidance required during simultaneous operations.



MISSED APPROACH: Climb to 5000 via track 258° to OVNUY and via track 261° to BKK VORTAC and hold.

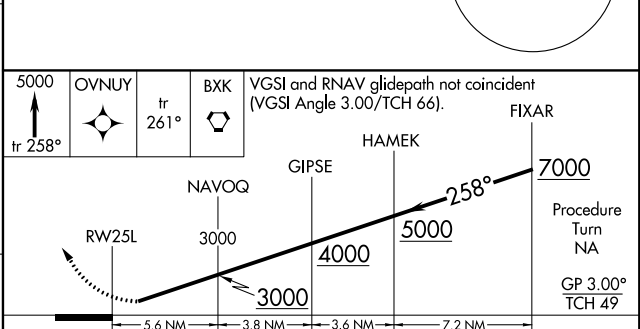
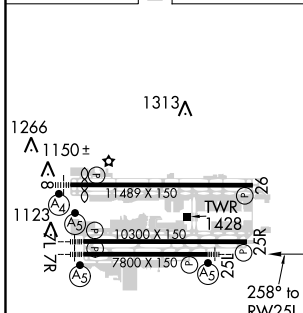
D-ATIS 127.575	PHOENIX APP CON 128.65 353.9	PHOENIX TOWER 118.7 278.8 (Rwy 8-26) 120.9 254.3 (Rwy 7L-25R, 7R-25L)	GND CON 119.75 269.2 (N) 132.55 269.2 (S)	CLNC DEL 118.1 269.2	CPDLC
--------------------------	--	---	---	--------------------------------	-------



SW-4, 10 SEP 2020 to 08 OCT 2020

SW-4, 10 SEP 2020 to 08 OCT 2020

ELEV 1135	D	TDZE 1126
-----------	----------	-----------



CATEGORY	A	B	C	D
RNP 0.11 DA		1617-1¼	491 (500-1¼)	
RNP 0.30 DA		1664-1½	538 (600-1½)	

HIRL Rwys 8-26, 7L-25R and 7R-25L
REIL Rwy 26

AUTHORIZATION REQUIRED