

APP CRS	Rwy Idg	<b>10300</b>
<b>258°</b>	TDZE	<b>1134</b>
	Apt Elev	<b>1135</b>

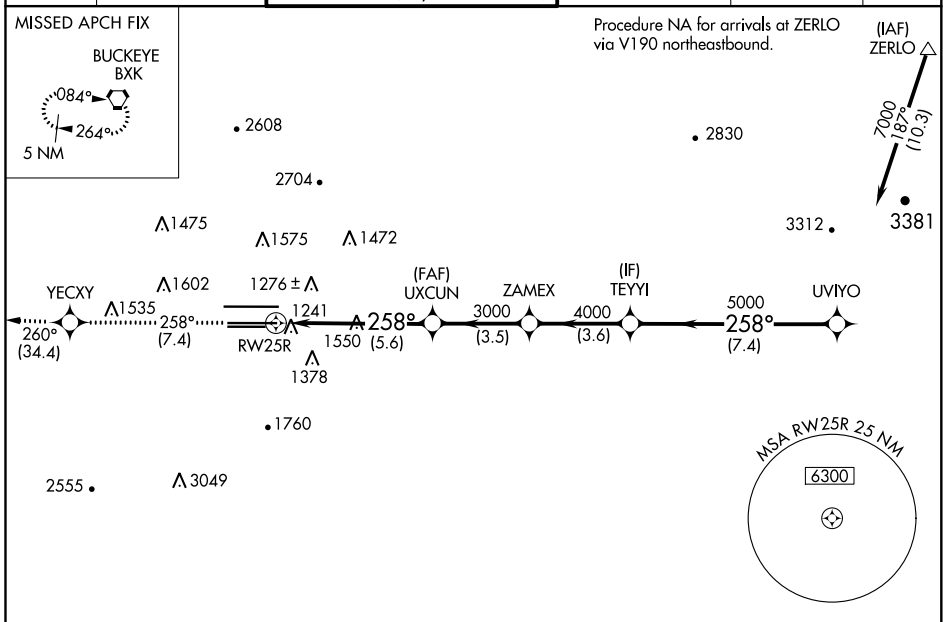
# RNAV (RNP) Z RWY 25R

PHOENIX SKY HARBOR INTL (PHX)

**Visibility reduction by helicopters NA. GPS required. For uncompensated Baro-VNAV systems, procedure NA below 1°C (34°F) or above 46°C (116°F). Simultaneous approach authorized with ILS or LOC Rwy 26. Use of FD or AP providing RNAV track guidance required during simultaneous operations.**

**MISSED APPROACH:** Climb to 5000 via track 258° to YECXY and via track 260° to BXX VORTAC and hold.

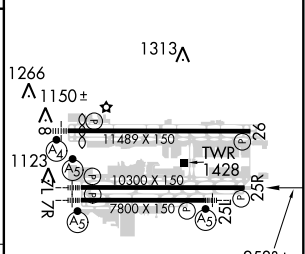
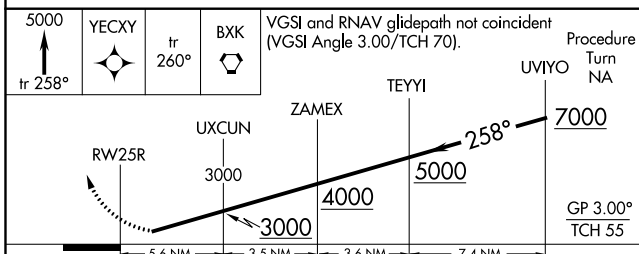
D-ATIS	PHOENIX APP CON	<b>PHOENIX TOWER</b>	GND CON	CLNC DEL	CPDLC
<b>127.575</b>	<b>128.65 353.9</b>	<b>118.7 278.8</b> (Rwy 8-26) <b>120.9 254.3</b> (Rwy 7L-25R, 7R-25L)	<b>119.75 269.2</b> (N) <b>132.55 269.2</b> (S)	<b>118.1 269.2</b>	



SW-4, 10 SEP 2020 to 08 OCT 2020

SW-4, 10 SEP 2020 to 08 OCT 2020

ELEV 1135	<b>D</b> TDZE 1134
-----------	--------------------



CATEGORY	A	B	C	D
RNP 0.20 DA		1597-1½	463 (500-1½)	
RNP 0.30 DA		1622-1¾	488 (500-1¾)	

**AUTHORIZATION REQUIRED**

HIRL Rwy 8-26, 7L-25R and 7R-25L  
REIL Rwy 26