


APP CRS	Rwy Idg	<b>7800</b>
<b>078°</b>	TDZE	<b>1116</b>
	Apt Elev	<b>1135</b>

# RNAV (RNP) Z RWY 7R

PHOENIX SKY HARBOR INTL (PHX)

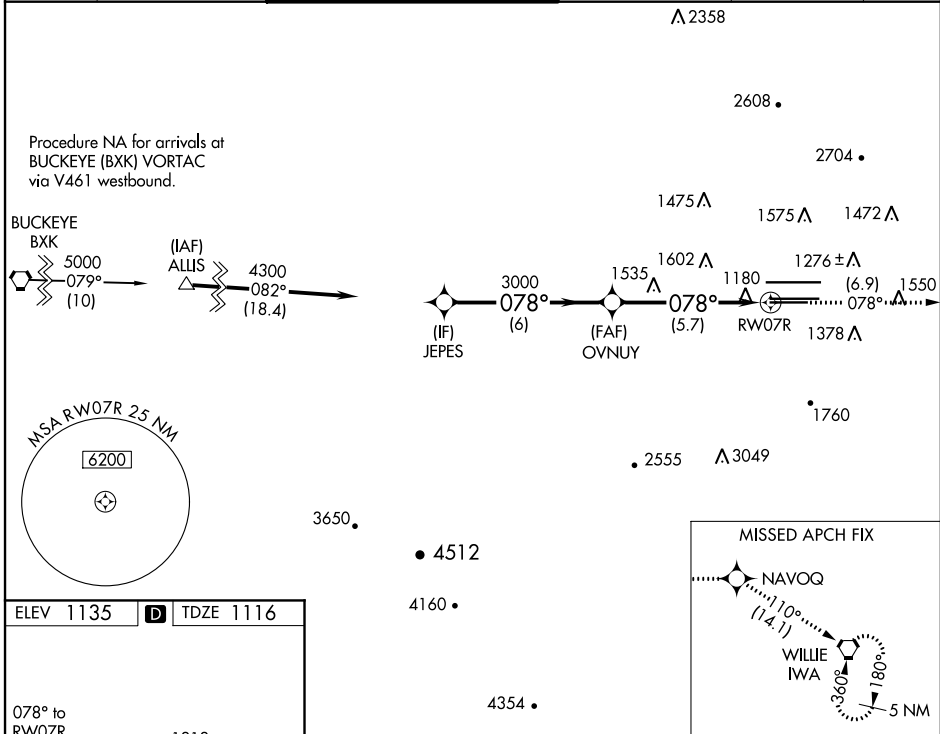
**▼** GPS required. For uncompensated Baro-VNAV systems, procedure NA below 1°C (34°F) or above 46°C (116°F). For inoperative MALSR, increase RNP 0.30 all Cats visibility to 1½. Simultaneous approach authorized with ILS or LOC Rwy 8. Use of FD or AP providing RNAV track guidance required during simultaneous operations.

**MALSR**

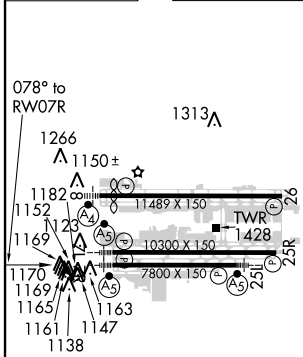


**MISSED APPROACH:** Climb to 5000 via track 078° to NAVOQ and via track 110° to IWA VORTAC and hold.

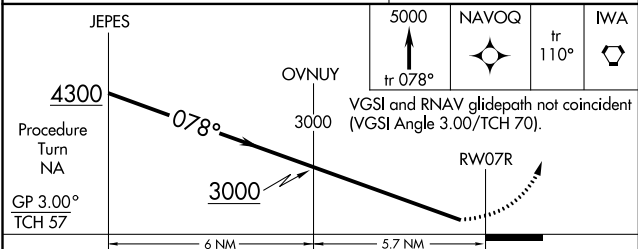
D-ATIS	PHOENIX APP CON	PHOENIX TOWER	GND CON	CLNC DEL	CPDLC
<b>127.575</b>	<b>128.65 353.9</b>	<b>118.7 278.8</b> (Rwy 8-26) <b>120.9 254.3</b> (Rwy 7L-25R, 7R-25L)	<b>119.75 269.2</b> (N) <b>132.55 269.2</b> (S)	<b>118.1 269.2</b>	



ELEV	<b>1135</b>	<b>D</b>	TDZE	<b>1116</b>
------	-------------	----------	------	-------------



HIRL Rwy 8-26, 7L-25R and 7R-25L  
REIL Rwy 26



CATEGORY	A	B	C	D
RNP 0.30 DA		1523-1	407 (400-1)	

**AUTHORIZATION REQUIRED**

SW-4, 10 SEP 2020 to 08 OCT 2020

SW-4, 10 SEP 2020 to 08 OCT 2020