

APP CRS	Rwy Idg	10591
078°	TDZE	1118
	Apt Elev	1135

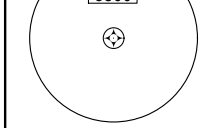
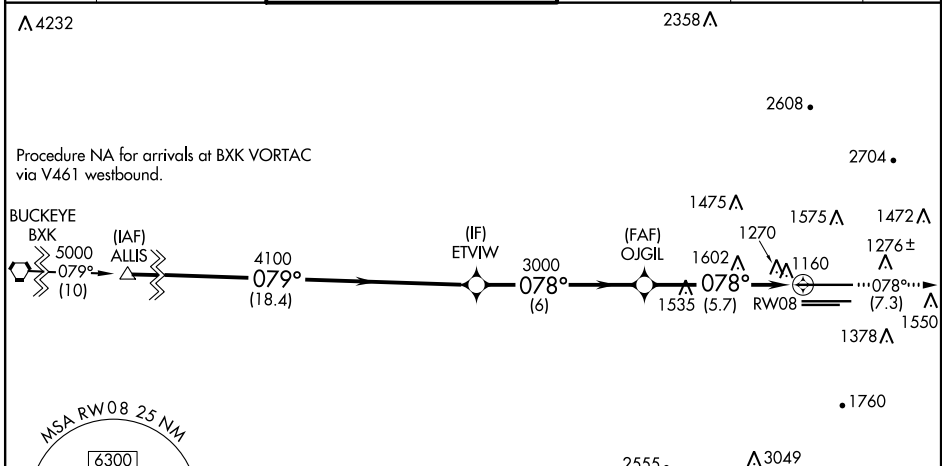
RNAV (RNP) Z RWY 8

PHOENIX SKY HARBOR INTL (PHX)

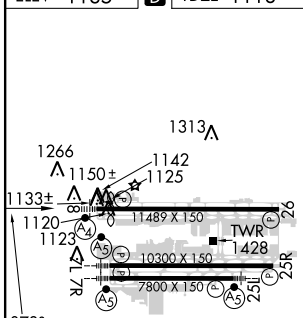
▼ GPS required. Visibility reduction by helicopters NA.
 For uncompensated Baro-VNAV systems, procedure NA below 1°C (34°F) or above 46°C (116°F).
 For inoperative MALSF, increase RNP 0.13 all Cats visibility to 1¼, and RNP 0.30 all Cats visibility to 1¾.

MALSF MISSED APPROACH: Climb to 5000 via track 078° to YOKXO and via track 114° to IWA VORTAC and hold.

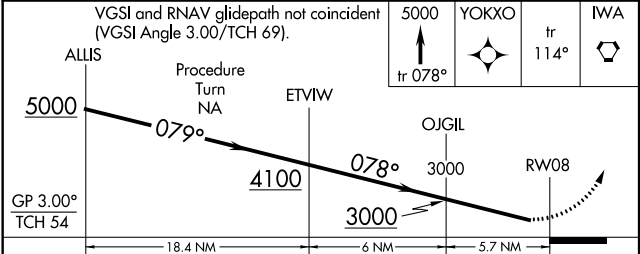
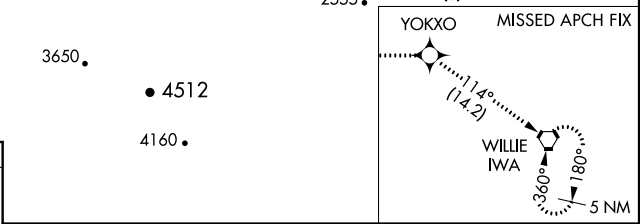
D-ATIS	PHOENIX APP CON	PHOENIX TOWER	GND CON	CLNC DEL	CPDLC
127.575	128.65 353.9	118.7 278.8 (Rwy 8-26) 120.9 254.3 (Rwy 7L-25R, 7R-25L)	119.75 269.2 (N) 132.55 269.2 (S)	118.1 269.2	



ELEV	1135	D	TDZE	1118
------	-------------	----------	------	-------------



HIRL Rwy 8-26, 7L-25R and 7R-25L
 REIL Rwy 26



VGSI and RNAV glidepath not coincident (VGSI Angle 3.00/TCH 69).	5000	YOKXO	IWA
	↑ tr 078°		tr 114°
GP 3.00° TCH 54	ALLIS	ETVIW	OJGIL
	5000	4100	3000
	18.4 NM	6 NM	5.7 NM
CATEGORY	A	B	C
RNP 0.13 DA	1478-1 360 (400-1)		
RNP 0.30 DA	1603-1½ 485 (500-1½)		

AUTHORIZATION REQUIRED

SW-4, 10 SEP 2020 to 08 OCT 2020

SW-4, 10 SEP 2020 to 08 OCT 2020