


WAAS CH <b>82211</b> <b>W25B</b>	APP CRS <b>258°</b>	Rwy Idg TDZE Apt Elev	<b>7800</b> <b>1126</b> <b>1135</b>
--	------------------------	-----------------------------	---

# RNAV (GPS) Y RWY 25L

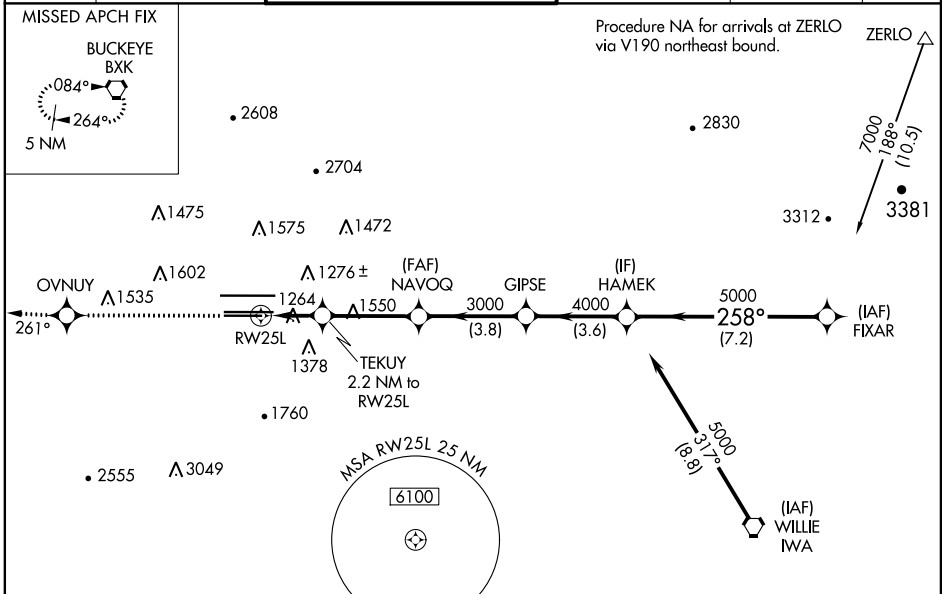
PHOENIX SKY HARBOR INTL (PHX)

**⚠** For inop ALS, increase visibility LNAV/VNAV all Cats to 1 3/8 SM. For uncompensated Baro-VNAV systems, LNAV/VNAV NA below -17°C (2°F) or above 46°C (114°F). DME/DME RNP-0.3 NA. Simultaneous approach authorized with ILS or LOC Rwy 26. Use of FD or AP providing RNAV track guidance required during simultaneous operations. LNAV procedure NA during simultaneous operations.

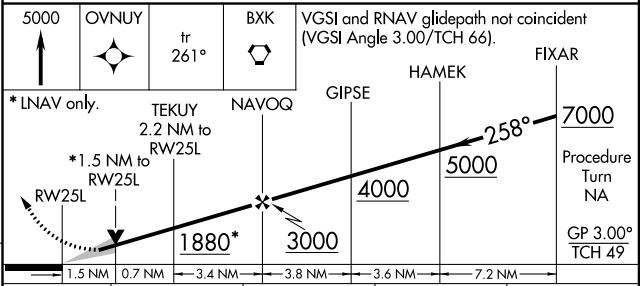
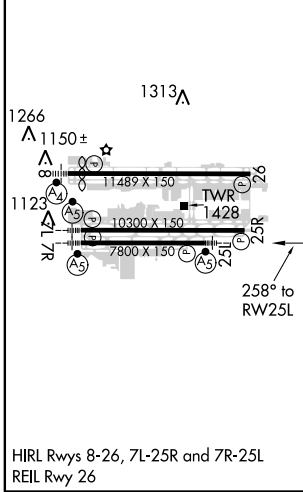
**MALSR**  


**MISSED APPROACH:** Climb to 5000 direct OVNUY and via 261° track to BXX VORTAC and hold.

D-ATIS <b>127.575</b>	PHOENIX APP CON <b>128.65 353.9</b>	<b>PHOENIX TOWER</b> <b>118.7 278.8</b> (Rwy 8-26) <b>120.9 254.3</b> (Rwy 7L-25R, 7R-25L)	GND CON <b>119.75 269.2</b> (N) <b>132.55 269.2</b> (S)	CLNC DEL <b>118.1 269.2</b>	CPDLC
--------------------------	--	--	---	--------------------------------	-------



ELEV 1135	<b>D</b>	TDZE 1126
-----------	----------	-----------



CATEGORY	A	B	C	D
LPV DA		1482-3/4	356 (400-3/4)	
LNAV/VNAV DA		1613-1/4	487 (500-1/4)	
LNAV MDA	1680-1/2	554 (600-1/2)	1680-1 1/8 554 (600-1 1/8)	1680-1 1/4 554 (600-1 1/4)
<b>C</b> CIRCLING	1740-1	605 (700-1)	2040-2 3/4 905 (1000-2 3/4)	2560-3 1425 (1500-3)

SW-4, 10 SEP 2020 to 08 OCT 2020

SW-4, 10 SEP 2020 to 08 OCT 2020