

ILS or LOC RWY 15

LOC I-GRF 108.3 Chan 20	APCH CRS 151°	Rwy Idg TDZE 300 Arpt Elev 301
--------------------------------------	-------------------------	--

AL-413 [USA]

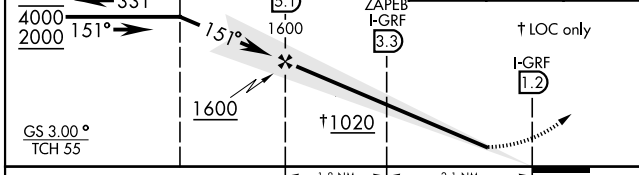
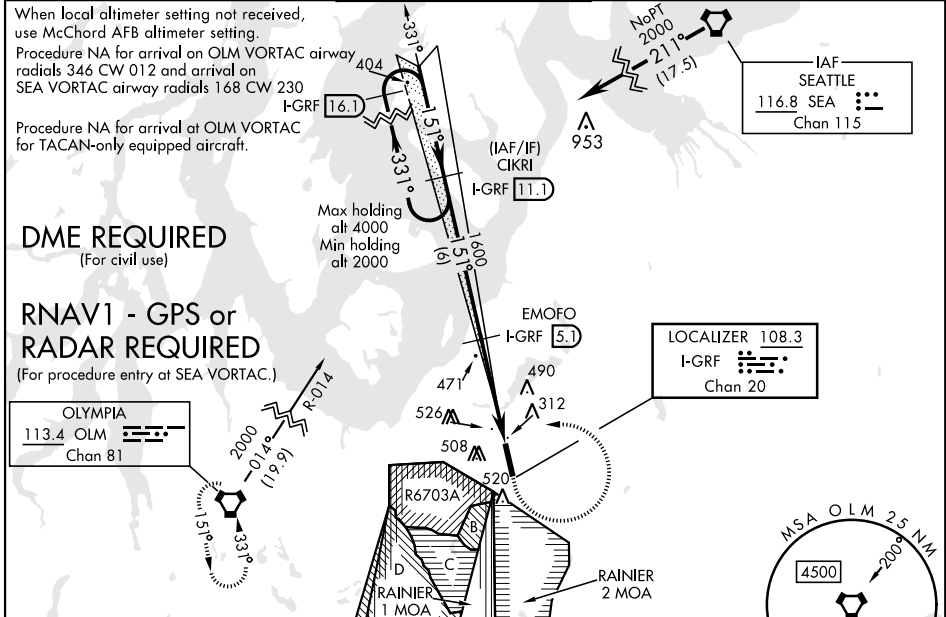
GRAY AAF (KGRF)

▼ *When ALS inop when using McChord AFB altimeter setting, increase LOC CAT C/D vis to RVR 55.
▲ **Circling not authorized W of Rwy 15-33.

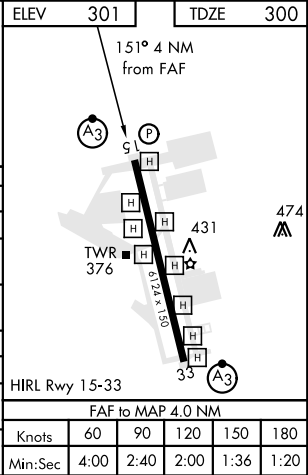


MISSED APPROACH: Climb to 1000, then climbing left turn to 3000 on hdg 270° and OLM VORTAC R-014, then continue climb to 4000 on OLM R-014 to OLM and hold.

ATIS 124.65 306.2	SEATTLE APP CON 120.1 290.9	GRAY TOWER ★ 119.325 (CTAF) 256.8	GND CON 121.9 290.2	CLNC DEL 121.9 290.2	PAR
-----------------------------	---------------------------------------	---	-------------------------------	--------------------------------	-----



CATEGORY	A	B	C	D
S-ILS 15	500/24		200	(200-½)
S-LOC 15	640/24	340 (400-½)	640/26	340 (400-½)
CIRCLING **	840-1	539 (600-1)	840-1½ 539 (600-1½)	920-2 619 (700-2)
McCHORD FLD ALTIMETER SETTING MINIMUMS				
S-ILS 15	516/24		216	(300-½)
S-LOC 15*	660/24	360 (400-½)	660/35	360 (400-¾)
CIRCLING **	860-1	559 (600-1)	860-1½ 559 (600-1½)	940-2 639 (700-2)



ILS or LOC RWY 15

NW-1, 10 SEP 2020 to 08 OCT 2020

NW-1, 10 SEP 2020 to 08 OCT 2020